
User's Manual

EHP-50G

ELECTRIC AND MAGNETIC FIELD PROBE - ANALYZER

From 1 Hz up to 400 kHz

SERIAL NUMBER OF THE INSTRUMENT

You can find the Serial Number on the bottom cover of the instrument.

The Serial Number is in the form: 000XY00000.

The first three digits and the two letters are the Serial Number prefix, the last five digits are the Serial Number suffix. The prefix is the same for identical instruments, it changes only when a configuration change is made to the instrument.

The suffix is different for each instrument

NOTE:

® Names and Logo are registered trademarks of Narda Safety Test Solutions GmbH – Trade names are trademarks of the owners.



If the instrument is used in any other way than as described in this User's Manual, it may become unsafe.

Before using this product, the related documentation must be read with great care and fully understood to familiarize with all the safety prescriptions.

To ensure the correct use and the maximum safety level, the User shall know all the instructions and recommendations contained in this document.




This product is a **Safety Class III** instrument according to IEC classification and has been designed to meet the requirements of EN61010-1 (Safety Requirements for Electrical Equipment for Measurement, Control and Laboratory Use).

In accordance with the IEC classification, the power supply of this product meets requirements **Safety Class II** and **Installation Category II** (having double insulation and able to carry out mono-phase power supply operations).

It complies with the requirements of **Pollution Class II** (usually only non-conductive pollution). However, occasionally it may become temporarily conductive due to condense on it.

The information contained in this document is subject to change without notice.

EXPLANATION OF ELECTRICAL AND SAFETY SYMBOLS :

 You now own a high-quality instrument that will give you many years of reliable service. Nevertheless, even this product will become obsolete. When that time comes, please remember that electronic equipment must be disposed of in accordance with local regulations. This product conforms to the WEEE Directive of the European Union (2002/96/EC) and belongs to Category 9 (Monitoring and Control Instruments). You can return the instrument to us free of charge for proper environment friendly disposal. You can obtain further information from your local Narda Sales Partner or by visiting our website at www.narda-sts.it.



Warning, danger of electric shock



Earth



Read carefully the Operating Manual and its instructions, pay attention to the safety symbols.



Unit Earth Connection



Earth Protection



Equipotential

EXPLANATION OF SYMBOLS USED IN THIS DOCUMENT :



The DANGER sign draws attention to a serious risk to a person's safety, which, if not avoided, will result in death or serious injury. All the precautions must be fully understood and applied before proceeding.



The WARNING sign indicates a hazardous situation, which, if not avoided, could result in death or serious injury. All the precautions must be fully understood and applied before proceeding.



The CAUTION sign indicates a hazardous situation, which, if not avoided, could result in minor or moderate injury.



The NOTICE sign draws attention to a potential risk of damage to the apparatus or loss of data.



The NOTE sign draws attention to important information.

Contents

Safety requirements and instructions.....	Page VII
EC Declaration of Conformity	VIII
1 General information	Page
1.1 Documentation.....	1-1
1.2 Introduction	1-1
1.3 Configuration and Standard accessories.....	1-3
1.4 Optional accessories	1-3
1.5 Main specifications.....	1-4
1.6 Isotropic E&H EHP-50G typical uncertainty and Anisotropy.....	1-5
1.6.1 Typical uncertainty of EHP-50G.....	1-5
1.6.2 Explication Notes.....	1-6
1.6.3 Measurements uncertainty of EHP-50G (Weighted Peak mode)	1-7
1.7 Anisotropy.....	1-8
1.8 Overload level.....	1-11
1.9 EHP-50G panel.....	1-12
2 Software interface	Page
2.1 Introduction.....	2-1
2.2 Preliminary inspection.....	2-1
2.3 Work Environment.....	2-1
2.4 To return for repair.....	2-1
2.5 Equipment cleaning.....	2-1
2.6 Power supply and battery recharging.....	2-2
2.7 EHP-50G connected to a PC.....	2-3
2.8 EHP-50G stand alone mode.....	2-3
2.9 EHP-50G with 8053B DISPLAY.....	2-3
2.10 Battery management.....	2-3
2.11 Avoiding measurement errors.....	2-4
3 EHP-TS installation	Page
3.1 Introduction.....	3-1
3.2 Hardware requirements.....	3-1
3.3 Installing EHP-TS Software.....	3-2
4 EHP50-TS software	Page
4.1 EHP50-TS Description.....	4-1
4.2 EHP-50G Installation.....	4-2
4.3 EHP-50G on and Led status.....	4-2
4.4 EHP-50G battery Charging.....	4-2
4.5 Run EHP50-TS application.....	4-3
4.6 EHP50-TS Main window.....	4-4
4.7 Mode section.....	4-5
4.8 Span section.....	4-6
4.9 Standard.....	4-8
4.10 Data section.....	4-10
4.10.1 Waterfall.....	4-14
4.10.1.1 Data recording.....	4-18
4.11 Style section.....	4-19
4.12 ICNIRP.....	4-20
4.13 IEEE.....	4-22
4.14 Weighted Peal Function (Time Domain).....	4-24
4.14.1 Weighted Peak requirements.....	4-24
4.14.1.1 Weighted Peak activation procedure.....	4-24
4.14.2 EHP-TS Settings.....	4-25
4.14.3 Weighted Peak Mode.....	4-26
4.14.3.1 Dynamic range.....	4-28
4.15 Additional funtions provided by EHP200-TS.....	4-29

5 EHP-50G Stand-alone mode	Page
5.1 Stand-alone mode description.....	5-1
5.2 EHP-50G Installation.....	5-1
5.3 EHP-50 Stand-alone main window.....	5-2
5.4 Title bar.....	5-3
5.5 Preference.....	5-3
5.6 Info	5-3
5.7 Use of EHP-50 Stand-alone application.....	5-4
5.8 Read Logger button.....	5-5
5.9 Function section.....	5-5
5.10 EHP50G Logger setup section.....	5-6
5.11 Scheduler section.....	5-7
5.11.1 Scheduler section in Frequency Domain.....	5-7
5.11.2 Scheduler section in Time Domain.....	5-8
5.12 Standard section.....	5-9
5.13 Set Logger button.....	5-9
5.14 Installation on site and EHP-50G led status.....	5-9
5.15 Download data.....	5-10
5.16 EHP-50G Stand Alone data display.....	5-11
5.16.1 Frequency Domain data	5-11
5.16.1.1 Unit section.....	5-11
5.16.2 Time Domain data.....	5-12
5.17 Logger DATA section.....	5-13
5.18 Save button.....	5-14
6 Update Firmware	Page
6.1 Update firmware.....	6-1
6.2 To run the update software.....	6-1
6.3 To transfer data	6-1
6.4 Dongle Utility.....	6-4
7 Uninstalling software	Page
7.1 Uninstalling EHP-TS Software	7-1
8 Uninstalling USB-OC	Page
8.1 Uninstalling driver for USB-OC.....	8-1

9 Accessories	Page
9.1 Introduction.....	9-1
9.1.1 Preliminary inspection.....	9-1
9.1.2 Work environment.....	9-1
9.1.3 Return for repair.....	9-1
9.1.4 Cleaning.....	9-1
9.1.5 Power supply and battery chargers.....	9-2
9.2 USB-OC Optical USB Converter.....	9-3
9.2.1 Introduction.....	9-3
9.2.2 Installation.....	9-3
9.3 8053-OC Optical RS232 Converter.....	9-4
9.3.1 Introduction.....	9-4
9.3.2 Installation.....	9-4
9.4 8053-OC-PS Power Supply.....	9-5
9.4.1 Introduction.....	9-5
9.4.2 Installation.....	9-5
9.5 8053B DISPLAY Unit.....	9-6
9.5.1 Introduction.....	9-8
9.5.2 Standard Accessories.....	9-8
9.5.3 Optional Accessories.....	9-8
9.5.4 Field probes.....	9-8
9.5.5 8053 Display Main specifications.....	9-9
9.5.6 8053B Front Panel.....	9-10
9.5.7 8053B Side Panel.....	9-10
9.5.8 8053B Battery charger.....	9-11
9.5.9 To substitute the mains connector.....	9-11
9.5.10 To check the internal batteries.....	9-11
9.6 TR-02A Tripod.....	9-12
9.6.1 Introduction.....	9-12
9.7 TT-01 Fiber glass Telescopic support.....	9-14
9.7.1 Introduction.....	9-14
9.8 Other accessories.....	9-15

Figures

Figure		Page
1-1	Block Diagram of the EHP-50G	1-2
1-2	3D mesh measurements of magnetic probe.....	1-8
1-3	EHP-50G axes.....	1-9
1-4	Overload level EHP-50G (B Field, RMS).....	1-11
1-5	Overload level EHP-50G (E Field, RMS).....	1-11
1-6	EHP-50G panel	1-12
3-1	EHP-TS Installation.....	3-2
4-1	Optical bridge connector.....	4-2
4-2	EHP50 EHP-TS Main Window.....	4-4
4-3	Defining frequency band through the PC mouse.....	4-6
4-4	Zoom window.....	4-7
4-5	Data section.....	4-10
4-6	Auto save text extract example.....	4-13
4-7	Waterfall - Graph 2D.....	4-14
4-8	Waterfall Main Window.....	4-15
4-9	Waterfall - Graph 3D.....	4-16
4-10	Electric and magnetic fields.....	4-29
4-11	Power density spectrum.....	4-29
4-12	New wave impedance function.....	4-30
5-1	EHP-50 Stand-Alone main window freq. domain.....	5-2
6-1	EHP-50G Upgrading Utility Main Window.....	6-1
6-2	EHP-50G Options activation Utility Main Window.....	6-4
7-1	Uninstalling EHP-TS.....	7-1
8-1	Uninstalling USB-OC.....	8-2
9-1	USB-OC Adapter.....	9-3
9-2	8053-OC Panels.....	9-4
9-3	8053-OC-PS Connectors.....	9-5
9-4	8053B.....	9-6
9-5	8053 Logger Interface software.....	9-6
9-6	Monitor Mode.....	9-7
9-7	XYZ Mode %.....	9-7
9-8	Monitor Mode ABS.....	9-7
9-9	Spectrum Mode.....	9-7
9-10	Mode Plot.....	9-7
9-11	Weighted Peak Mode.....	9-7
9-12	8053 Front Panel.....	9-10
9-13	8053 Side Panel.....	9-10
9-14	TR-02A Tripod.....	9-12
9-15	TT-01 Fiber Glass Telescopic Support.....	9-14

Tables

Table		Page
1-1	Technical Specifications of the EHP-50G.....	1-4
2-1	Autonomy of the battery.....	2-3
9-1	Technical Specifications of the USB-OC.....	9-3
9-2	Technical Specifications of the 8053-OC.....	9-4
9-3	Technical Specifications of the 8053-OC-PS.....	9-5
9-4	Technical Specifications of the EHP-200A.....	9-8
9-5	Technical Specifications of the EHP-200AC.....	9-8
9-6	Technical Specifications of the 8053 DISPLAY.....	9-9
9-7	Technical Specifications of the TR-02A.....	9-12
9-8	Technical Specifications of the TT-01.....	9-14

⚠ WARNING ***SAFETY RECOMMENDATIONS AND INSTRUCTIONS***

This product has been designed, produced and tested in Italy, and it left the factory in conditions fully complying with the current safety standards. To maintain it in safe conditions and ensure correct use, these general instructions must be fully understood and applied before the product is used.

- When the device must be connected permanently, first provide effective grounding;
- If the device must be connected to other equipment or accessories, make sure they are all safely grounded;
- In case of devices permanently connected to the power supply, and lacking any fuses or other devices of mains protection, the power line must be equipped with adequate protection commensurate to the consumption of all the devices connected to it;
- In case of connection of the device to the power mains, make sure before connection that the voltage selected on the voltage switch and the fuses are adequate for the voltage of the actual mains;
- Devices in Safety Class I, equipped with connection to the power mains by means of cord and plug, can only be plugged into a socket equipped with a ground wire;
- Any interruption or loosening of the ground wire or of a connecting power cable, inside or outside the device, will cause a potential risk for the safety of the personnel;
- Ground connections must not be interrupted intentionally;
- To prevent the possible danger of electrocution, do not remove any covers, panels or guards installed on the device, and refer only to NARDA Service Centers if maintenance should be necessary;
- To maintain adequate protection from fire hazards, replace fuses only with others of the same type and rating;
- Follow the safety regulations and any additional instructions in this manual to prevent accidents and damages.

Dichiarazione di Conformità *EC Declaration of Conformity*

In accordo alla Decisione 768/2008/EC, conforme alle direttive EMC 2014/30/UE, Bassa Tensione 2014/35/UE e RoHS 2011/65/UE, ed anche alle norme ISO/IEC 17050-1 e 17050-2.
In accordance with the Decision 768/2008/EC, compliant to the Directives EMC 2014/30/EU, Low Voltage 2014/35/EU and RoHS 2011/65/EU, also compliant to the ISO/IEC standard 17050-1 and 17050-2

Il costruttore
The manufacturer **narda Safety Test Solutions S.r.l. Socio Unico**

Indirizzo
Address **Via Benessea, 29 / B**

I-17035 Cisano sul Neva (SV) - Italy

sulla base delle seguenti norme europee armonizzate, applicate con esito positivo:
based on the following harmonized European Standards, successfully applied:

EMC - Emissioni:
EMC - Emission: **EN 61326-1 (2013)**

EMC - Immunità:
EMC - Immunity: **EN 61326-1 (2013)**

Sicurezza:
Safety: **EN 61010-1 (2010)**

dichiara, sotto la propria responsabilità, che il prodotto:
declares, under its sole responsibility, that the product:

Descrizione
Description **SONDA ANALIZZATORE DI CAMPO ELETTRICO E MAGNETICO
*ELECTRIC AND MAGNETIC FIELD PROBE - ANALYZER***

Modello
Model **EHP-50G**

è conforme ai requisiti essenziali delle seguenti Direttive:
conforms with the essential requirements of the following Directives:

Bassa Tensione
Low Voltage **2014/35/EU**

Compatibilità Elettromagnetica
EMC **2014/30/EU**

RoHS
RoHS **2011/65/EU**

Cisano sul Neva, 20 April 2016

**Egon Stocca
General Manager**



1 - General information

1.1 Documentation

The following documents are included in this Manual:

- A questionnaire to be sent to NARDA together with the apparatus should service be required.
- A checklist of the Accessories included in the shipment.

This Manual includes description of EHP-50G standard and optional accessories.

1.2 Introduction



This section provides a general overview of EHP-50G Electric and Magnetic Field Analyzer.

EHP-50G is a low frequency electric and magnetic isotropic field probe-analyzer. It provides an advanced technology solution for field analysis in the 1 Hz to 400 kHz frequency range with high dynamic range. It includes X, Y and Z axes simultaneous measurements with a powerful, built in, spectrum analyzer.

EHP-50G can be used either connected to 8053B Portable Field meter or 8053 DISPLAY Unit or PC. Additionally, stand alone operation mode is provided for up to 36 hours continuous data collection without any connection to external devices.

EHP-50G includes a non volatile memory which stores frequency and level calibration tables; an optical interface for remote control and result display avoids distortion of the field under test.

Spectral analysis, obtained through DSP (Digital Signal Processor), is performed on eight different frequency Span values and displayed on the PC monitor or 8053B Portable Field meter or 8053 DISPLAY unit.

Marker function is available to provide accurate field strength and frequency measurement.

EHP-50G is managed internally with a microprocessor that controls all the main functions, from the battery charging to the serial communication with the DSP unit.

Electric or Magnetic field is picked up by three sensors on the X, Y and Z orthogonal axes. A Digital/Analog conversion follows which transforms the signal into numeric information processed by a Digital Signal Processing unit.

EHP-50G is housed in a small cubic housing. The bottom side panel includes an optic fiber connector, extension rod screw, battery charger connector, ON/OFF button and Status LED.

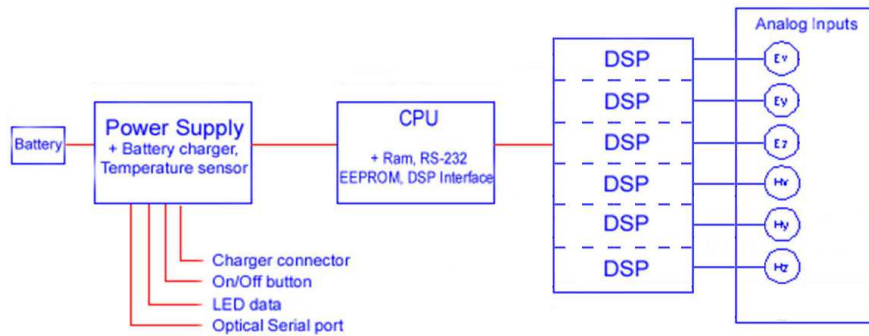


Fig. 1-1 Block diagram of the EHP-50G Analyzer

The magnetic sensor system is composed by three magnetic loops positioned orthogonal each other. The electric sensor system is composed by three orthogonal parallel capacitors installed on opposite side of the magnetic loops.

1.3 Configuration and Standard Accessories

EHP-50G can be purchased as part of two different sets, for 8053B Portable Field meter or 8053 DISPLAY Unit or Stand-alone/PC use, which difference consist of the included accessories.

- 8053-SC Soft carrying case, holds basic unit and accessories including 8053B Portable Field meter/8053 DISPLAY Unit;
- AC/DC Converter with italian plug adapter;
- FO-8053/10 Cable, fibre optic 10m
- FO-10USB Cable, fibre optic 10m;
- USB-OC Optical to USB converter;
- Optical bridge connector;
- Plastic rod support, 50cm;
- Mini tripod, bench top;
- EHP50-TS Software Media;
- Operating manual EHP-50G;
- Certificate of calibration;
- Return for Repair Form

1.4 Optional Accessories

The following accessories may be ordered as options:

- 2013/35 kit (including the EHP-50G itself);
- PMM 8053B Portable Field meter;
- PMM 8053 DISPLAY Unit
- FO-20USB Cable, fiber optic 20m;
- FO-40USB Cable, fiber optic 40m;
- FO-8053/20 Cable, fiber optic 20m;
- FO-8053/40 Cable, fiber optic 40m;
- FO-8053/80 Cable, fiber optic 80m;
- 8053-OC Optical to RS232 converter;
- 8053-OC-PS Power Supply;
- TR-02A wooden tripod 1-2m with soft carrying bag;
- TT-01 telescopic mast (120-420 cm) with carrying bag;
- 8053-CC Rigid case;
- 8053-CA Car Adapter.

1.5 EHP-50G Main specifications

When not differently specified the following specifications are referred to operating ambient temperature 23°C and relative humidity 50%.

Table 1-1 Technical specifications of the EHP-50G Electric and Magnetic Field Analyzer			
	Electric Field	Magnetic Field	AUX input (MMCX Zin 1kΩ)
Frequency range	1 Hz ÷ 400 kHz		
Measurement range (1)	low range high range	5 mV/m ÷ 1 kV/m 500mV/m ÷ 100 kV/m (146 dB)	0.3 nT ÷ 100 μT 30 nT ÷ 10 mT (150 dB)
Overload (high range)		200 kV/m (≤ 3 kHz)	20 mT (at 50 Hz)
Dynamic range		106 dB	110 dB
Resolution (2)		0.1 mV/m 1 mV/m Stand alone	0.1 nT 1 nT Stand alone
Displayed average noise level (3)	Isotropic result Single axis	5 mV/m 3 mV/m	0.3 nT 0.2 nT
Flatness (@ 100 V/m, 3 μT, 1mV)			30 nV
	(5 Hz ÷ 40 Hz)	±0.35 dB	±0.50 dB
	(40 Hz ÷ 300 kHz)	±0.35 dB	±0.35 dB
	(300 kHz ÷ 400 kHz)	±0.35 dB	±0.50 dB
Anisotropy (typ)		0.54 dB	0.12 dB
Linearity (referred to 100 V/m and 3 μT)	0.2 dB	(1 V/m ÷ 1 kV/m)	0.2 dB (200 nT ÷ 10 mT)
Internal memory	Up to 36 hours regardless the logging rate		
Internal data logger	measurement every 30 or 60 seconds in frequency domain - 1s in time domain		
Spectrum analysis method	FFT		
Time domain analysis method (4)	ICNIRP 1998, 2010 and 2013/35/EU weighed peak analysis		
Acquisition method	Simultaneous three axis acquisition		
SPAN	100 Hz, 200 Hz, 500 Hz, 1 kHz, 2 kHz, 10 kHz, 100 kHz, 400 kHz 400kHz only in Stand alone time domain		
Start frequency	1 Hz with SPAN 100 Hz; 1.2 % of the SPAN with wider SPAN		
Stop frequency	Equal to the SPAN		
Immunity to E fields	---	< 0.2 uT @ 20 kV/m	---
Immunity to H fields	< 10 V/m @ 1 mT	---	---
Calibration (5)	internal E ² PROM		
Typical temperature deviation @ 55 Hz referred to 23°C (@ 50% of relative humidity when applicable)	-4x10 ⁻³ dB/°C within -20 +55 °C	-8x10 ⁻³ dB/°C within -20 +23 °C +13x10 ⁻³ dB/°C within +23 +55 °C	---
Typical relative humidity deviation @ 55 Hz referred to 50% (@ 23 °C)	+11x10 ⁻³ dB/% within 10 50 % +22x10 ⁻³ dB/% within 50 90 %	-7x10 ⁻³ dB/% within 10 50 % +10x10 ⁻³ dB/% within 50 90 %	---
Dimensions	92 x 92 x 109 mm		
Weight	550 g		
Tripod support	Threaded insert 1/4"		
Environmental protection	IP42		
Internal battery	3.7 V / 5.4 Ah Li-Ion, rechargeable		
Operating time	>9 hours in standard mode 36 hours in stand alone mode		
Recharging time	< 6 hours		
External supply	10 ÷ 15 VDC, I = approx. 500 mA		
Optical fiber connection	Serial Optical Interface 38400 Baud - RP02 connector up to 40 m (USB-OC)		
Firmware updating	through the optical link by USB or RS232		
Self test	automatic at power on		
Operating temperature	-20 to +55 °C		
Operating relative humidity (6)	0 to 95 %		
Charging temperature	0 to +40°C		
Storage temperature	-30 to +75°C		

(1) For each single axis. Ranges to be selected manually

(2) For the lower measurement range

(3) DANL is frequency and SPAN depending. The specified best performance is referred to f ≥ 50 Hz and SPAN ≤ 1 kHz

(4) The FPGA operates in the time domain, implementing the hardware filters exactly as if the analog signal were passing through a chain of RC filters, being able to reconfigure poles and zeroes to adapt to legislations.

(5) Recommended re-calibration interval 24 month

(6) Without condensation

Specification are subject to change without notice

1.6 Isotropic E&H field analyzer EHP-50G uncertainty and anisotropy

The uncertainties have been determined according to EA-4/2 [4] and are expressed as relative values. They were estimated as expanded uncertainty obtained multiplying the standard by the coverage factor $k=1.96$, corresponding to a confidence level of about 95%.

1.6.1 Measurements uncertainty of EHP-50G (Spectrum mode)

The total uncertainty derived from contributions of linearity, anisotropy, frequency response, temperature, relative humidity and with/without contribution of uncertainty of calibration.

Magnetic probe ⁽¹⁾	Magnetic flux density range	Total expanded uncertainty (k=1.96)	
		Without contribution of uncertainty of calibration $U_{T\ EHP50G}$ (%)	With contribution of uncertainty of calibration U_{TOT} (%)
Frequency at 50/60 Hz	50 nT to < 100 μ T	2.4	3.1 ⁽²⁾
	100 μ T to 3000 μ T	2.6	4.3 ⁽⁴⁾
Frequency from 5 to 40 Hz	50 nT to 10.0 μ T	5.2	5.9 ⁽³⁾
Frequency from 40 Hz to 100 kHz	50 nT to 10.0 μ T	4.8	5.6 ⁽³⁾
Frequency from 100 to 400 kHz	50 nT to 10.0 μ T	7.5	8.1 ⁽³⁾

- (1) This uncertainty budget is for an ambient temperature of (23 +/- 4) °C, and relative humidity of (50 +/- 5) %
The expanded uncertainty for magnetic flux density for values close to 50 nT is calculated with negligible contribution of noise level.
- (2) The expanded uncertainty of calibration U_{Cal} used is 2,0%
- (3) The expanded uncertainty of calibration U_{Cal} used is 3.0%
- (4) The expanded uncertainty of calibration U_{Cal} used is 3.5%

Electric probe ⁽⁵⁾	Electric field range	Total expanded uncertainty (k=1.96)	
		Without contribution of uncertainty of calibration $U_{T\ EHP50G}$ (%)	With contribution of uncertainty of calibration U_{TOT} (%)
Frequency at 50/60 Hz	1 V/m to 1000 V/m	6.9	7.5 ⁽⁶⁾
	1 V/m to < 40 kV/m	7.6	8.1 ⁽⁶⁾
Frequency from 5 Hz to 100 kHz	1 V/m to < 1000 V/m	8.8	10.3 ⁽⁷⁾
Frequency from 100 to 400 kHz	1 V/m to < 1000 V/m	9.4	10.8 ⁽⁷⁾

- (5) This uncertainty budget is for an ambient temperature of (23 +/- 4) °C, and relative humidity of (50 +/- 5) %
- (6) The expanded uncertainty of calibration U_{Cal} used is 3.0%
- (7) The expanded uncertainty of calibration U_{Cal} used is 5.5%

1.6.2 Explication Notes

- a) If we have the certificate with different values of the uncertainty of calibration, in order to calculate the total expanded uncertainty U_{TOT} , the uncertainty of calibration has to be taken into account:

$$U_{TOT} = 1.96 \cdot \sqrt{(u_{T\ EHP\ 50})^2 + (u_{Cal})^2}$$

where $u_{T\ EHP\ 50}$ is the standard uncertainty

$$(u_{T\ EHP\ 50} = U_{T\ EHP\ 50} / 1.96)$$

.....

u_{Cal} is the standard uncertainty

$$(u_{Cal} = U_{Cal} / k)$$

where U_{Cal} is the expanded uncertainty reported on certificate and k is the coverage factor reported on certificate (normally $k=2$ or 1.96)

This quadratic sum is considered a precaution because the uncertainty u_{Cal} is added quadratically to an uncertainty that is already a combined uncertainty.

- b) When the environmental temperature is higher than 23 °C, the contribute due to the temperature can be added quadratically to the uncertainty.

Example: for magnetic measurements, if the temperature is 43°C, we get a variation of 20°C in comparison to 23°C, corresponding to a variation of 0.26 dB (0.013 dB / °C) equivalent to 3,04% and therefore, assuming a rectangular distribution of probability, the standard uncertainty is 1.755% (= 0,0304 / $\sqrt{3}$).

Assuming an expanded uncertainty $U_{TOT} = 2.4\%$,

$$U'_{TOT} = 1.96 \cdot \sqrt{\left(\frac{0.024}{2}\right)^2 + (0.01755)^2} \cong 0.042 \text{ is obtained.}$$

The quadratic sum is considered a precaution because the uncertainty due to temperature, is added quadratically to an uncertainty that is already a combined uncertainty.

A similar calculation can be made in case the relative humidity overcomes 50%.

**1.6.3 Measurements
Uncertainty of EHP-50G
(Weighted Peak mode)**

The total uncertainty derived from typical contributions of linearity, anisotropy, the worst case deviation from the nominal weighting filter, temperature and relative humidity.

Magnetic probe	Total expanded uncertainty %
Frequency from 15 Hz to 100 kHz	4.6
Frequency from 10 Hz to 300 kHz	7.1
Frequency from 3 Hz to 300 kHz	8.6

Electric probe¹	Total expanded uncertainty %
Frequency from 15 Hz to 250 kHz	8.3
Frequency from 3 Hz to 300 kHz	9.7

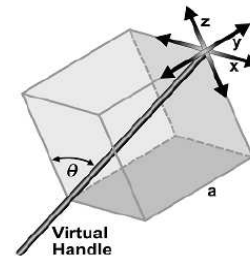


Below 3 Hz and above 300 kHz the uncertainty increases to 0.85 dB (band limiting filter not considered).

1.7 Anisotropy

1) The IEEE 1309 [3] defined the anisotropy (A) as the maximum deviation from the geometric mean of the maximum response and minimum response when the probe is rotated around the ortho-axis (e.g. "virtual handle") as shown in the example in figure below.

$$A = 20 \cdot \log_{10} \left(\frac{S_{\max}}{\sqrt{S_{\max} \cdot S_{\min}}} \right) \text{ dB} \quad \text{equation (1)}$$



$$\theta = \sin^{-1} \left(\frac{\sqrt{2} a}{\sqrt{3} a} \right) = 54.7^\circ$$

where S is the measured amplitude in field strength units.

2) The IEC 61786 [2] "Measurement of low-frequency magnetic and electric fields with regards to exposure of human beings - special requirements for instruments and guidance for measurements" does not define the anisotropy and suggests, for three-axis probes, the calibration of each axis when each element is aligned with the incident field.

The calibration should also be checked for a specific orientation where approximately there is the same indication for each one of the three axis (XYZ measurement).

Following this suggestion some laboratories find the minimum and the maximum values of the X, Y, Z and XYZ measure and calculate the anisotropy using equation (1).

3) We calculated the anisotropy with equation (1) but with 3D mesh measurements to cover 4π steradians, that is to say in a much more severe condition than the orthotropic one.

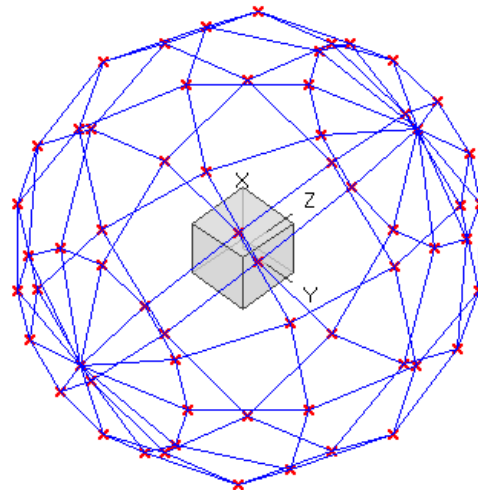
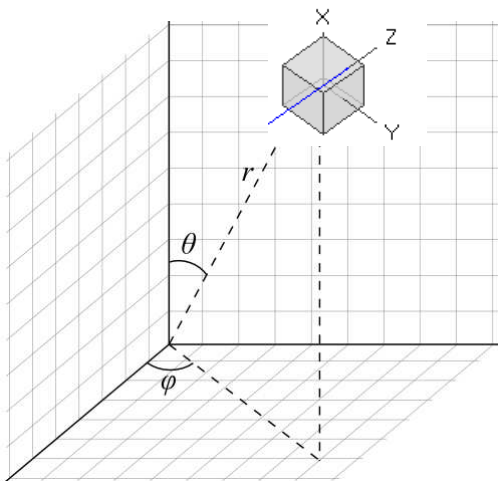


Fig. 1-2 3D mesh measurements of magnetic probe

Each x marker in the fig.1 indicates the coordinates surface of the spherical coordinates (r, θ, φ) .

The anisotropy is evaluated with 30 degrees steps for θ and φ , and r shows the calibration factor at each position.

The typical value of anisotropy is 1,4% (0.12 dB) for magnetic probe and 6,5% (0,54 dB) for electric probe.

The anisotropy calculated in this way is worse respect to other cases above described and it is more representative of the reality.

A good evaluation of the anisotropy of a field probe should be carried out in a place where all of the following conditions are satisfied:

- Far Field
- Plane wave
- Uniform field

Since the calibration systems are not infinite, these conditions can be approximated but never reached, and so the evaluation of anisotropy for our probes shows results worse than the reality. So, the real typical anisotropy response is better than what specified.

EHP-50G is housed in a small cubic case. The bottom side panel includes an optical fiber connector, extension rod screw, battery charger connector, ON/OFF button and Status LED.

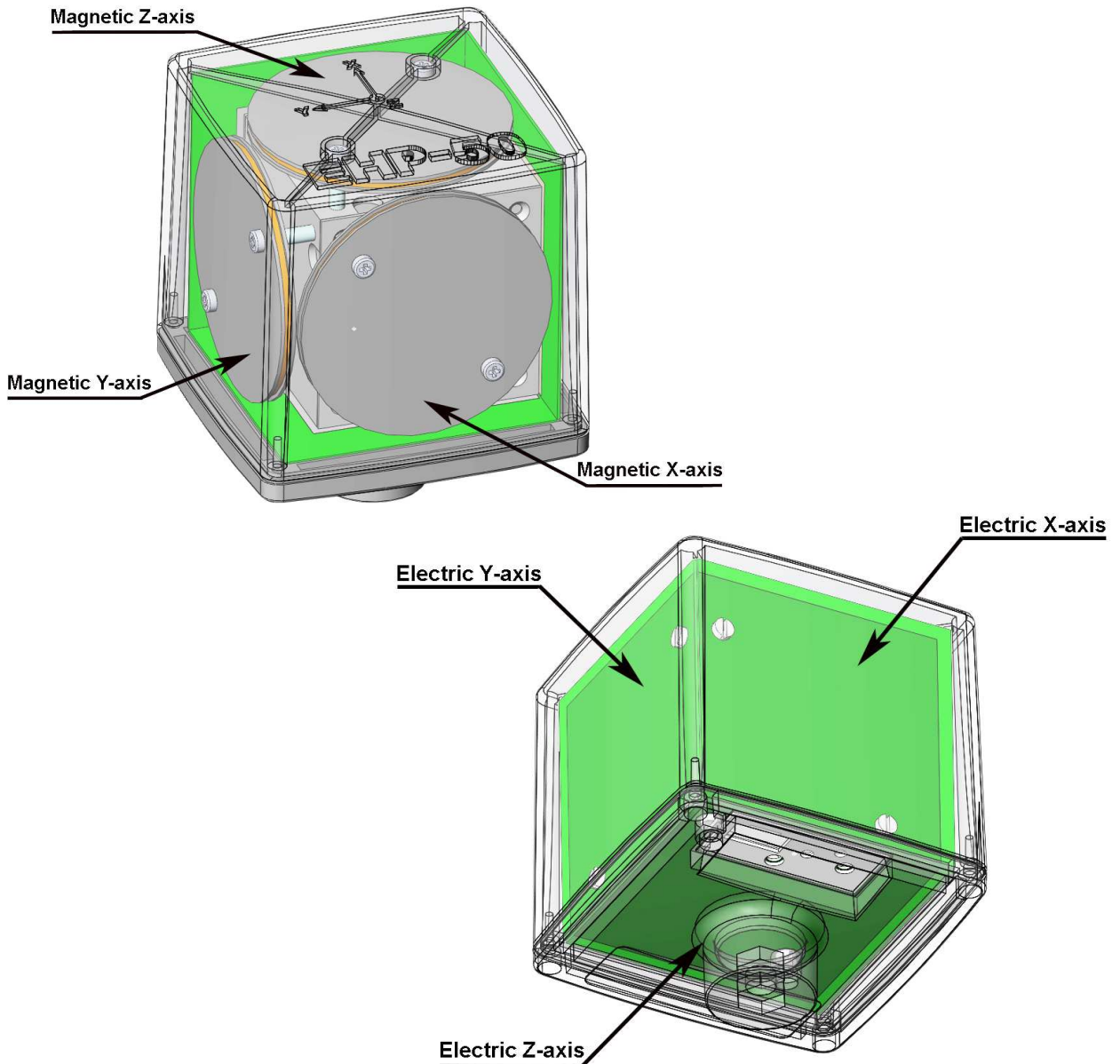
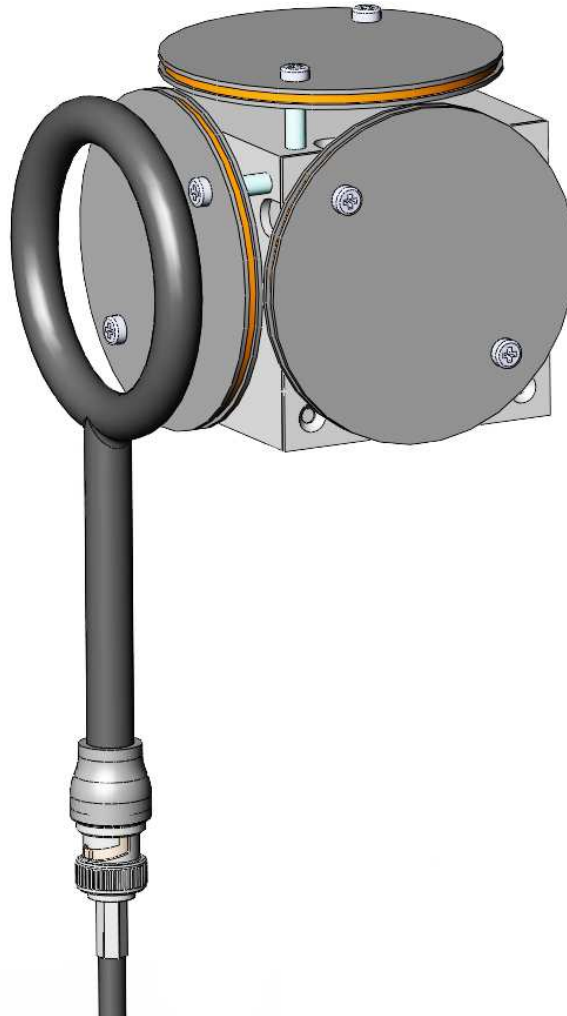


Fig. 1-3 EHP-50G axes

The sensitive elements are located approximately 9 mm below the external surface

As depicted above, the magnetic sensor system is composed by three magnetic loops positioned orthogonal each other. The electric sensor system is composed by three orthogonal parallel plates capacitors installed on the opposite side of the magnetic loops.

The geometric structure of the Narda probes, with sensors placed on the peripheral faces of the cube, shows the same behavior as one with the sensors accumulated in the center, when measuring far fields. Moreover, this provides the opportunity to evaluate also very nearby fields, albeit with all the limitations that this entails, knowing exactly where the single sensor is, and allowing to minimize the contribution of the others.



References

- [1] ISO/IEC "Guide to the expression of uncertainty in measurement" JCGM 100:2008 GUM 1995 with minor correction – International Organization for Standardization.
- [2] CEI-IEC 61786-1 ed. 1.0 "Measurement of DC magnetic, AC magnetic and AC electric fields from 1 Hz to 100 kHz with regard to exposure of human beings – Part 1: Requirements for measuring instruments.
- [3] IEEE Std 1309™-2005 (revision of IEEE Std 1309-1996) "IEEE Standard for Calibration of Electromagnetic Field Sensors and probes, Excluding Antennas, from 9 kHz to 40 GHz".
- [4] EA European co-operation for Accreditation – Public Reference EA-4/02 M:2013

1.8 Overload level

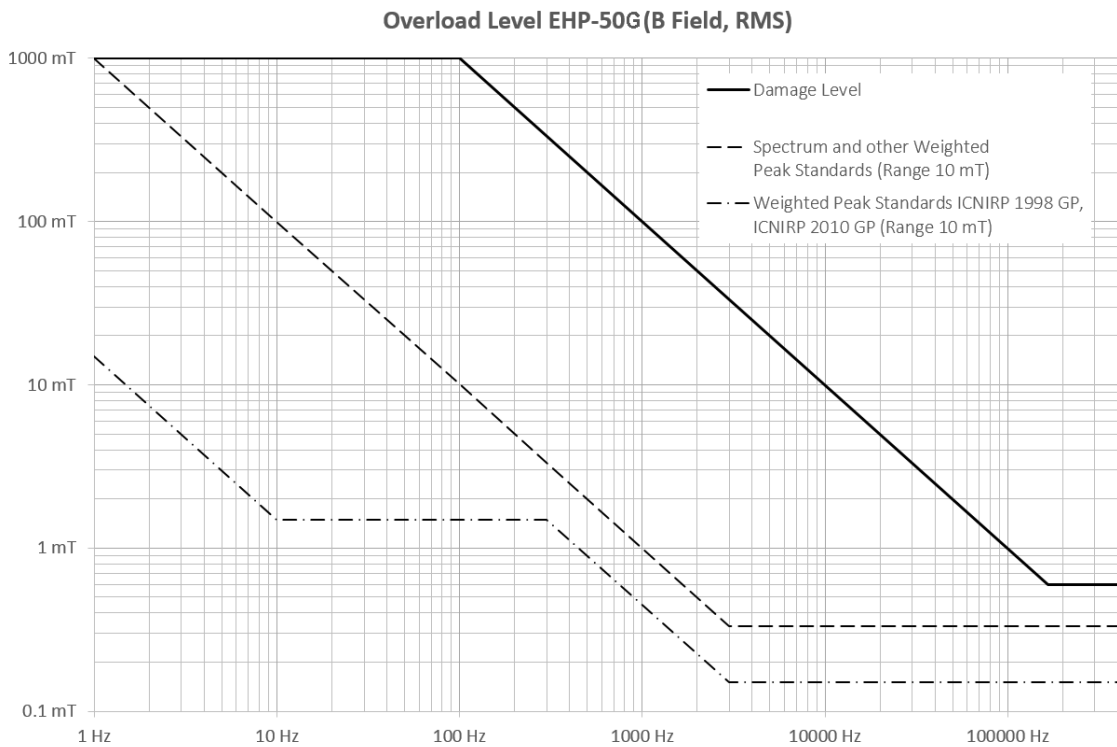


Fig. 1-4 Overload level EHP-50G (B Field, RMS)

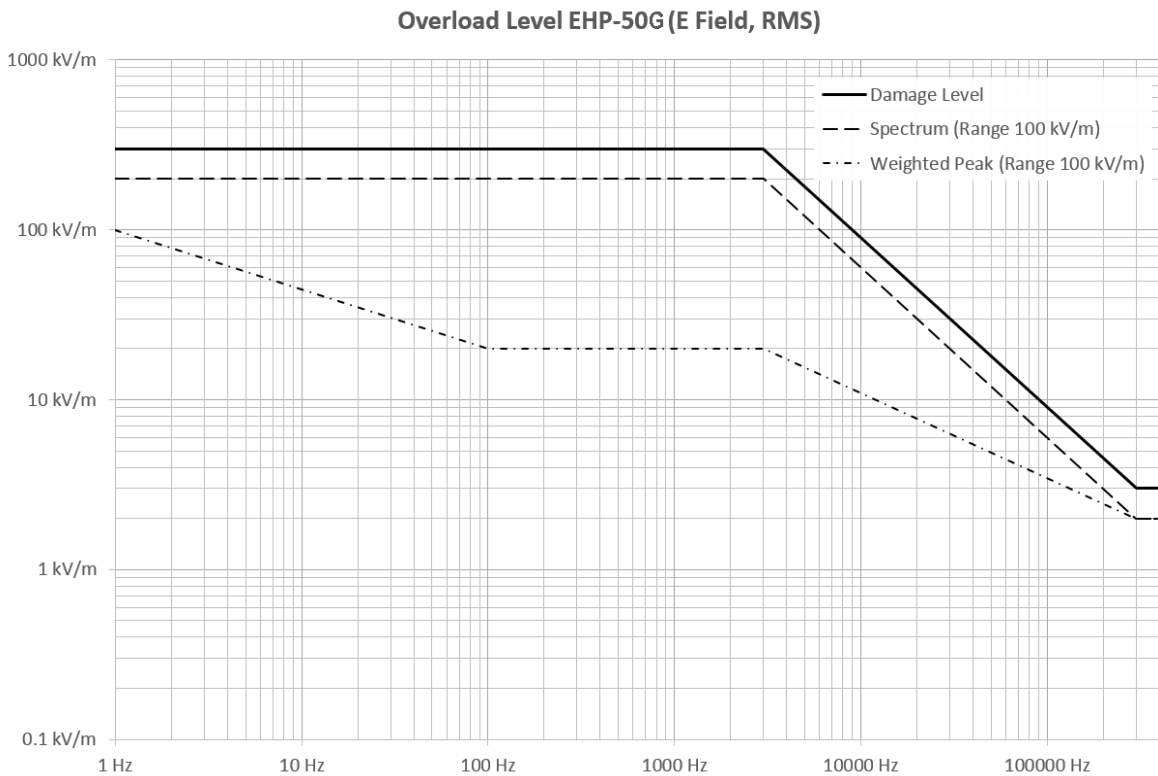


Fig. 1-5 Overload level EHP-50G (E Field, RMS)

1.9 EHP-50G Panel

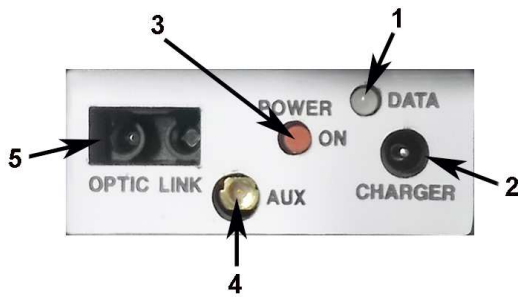


Fig. 1-6 Panel of EHP-50G

Key:

1. Led
2. Battery charger connector
3. ON/OFF button
4. AUX input connector MMCX male type
5. Fiber optic connector

2 - Installation and use

2.1 Introduction

This section provides the information required for installing and using the EHP-50G Analyzer.

Information is included regarding initial inspection, power requirements, interconnections, work environment, assembly, cleaning, storage and shipment.

2.2 Preliminary inspection

Inspect the packaging for any damage.

NOTICE

If the packaging or anti-shock material have been damaged, check that the contents are complete and that the meter has not suffered electric or mechanical damage.

Check that all the Accessories are there against the checklist found with the apparatus.

Inform the carrier and NARDA of any damage that has occurred.

2.3 Work environment

The work environment of the Accessories, must come within the following conditions:

- Temperature From -20°C to +55°C
- Humidity 0 to 95% relative

The meter must be stored in a clean and dry environment, free from acid dusts and humidity.

The storage environment must come within the range of the following conditions:

- Temperature From -30°C to +75°C
- Humidity < 100% relative without condense

2.4 To return for repair

When the meter needs to be returned to NARDA for repair, please complete the questionnaire appended to this User's Manual, filling in all the data that will be useful for the service you have requested.

For reducing the period of time required for the repairs, it is necessary to be as specific as possible in describing the problem. If the problem only occurs in certain circumstances, please describe in detail how it happens.

If possible it is better to reuse the original packaging; making sure that the apparatus is wrapped in thick paper or plastic.

Otherwise, use strong packaging by using a sufficient quantity of shock absorbent material around all sides of the meter to ensure that it is compact and does not move around inside the package.

In particular, take every precaution to protect the front panels.

Finish the package by sealing it up tightly.

Apply a FRAGILE label to the package to encourage greater care in its handling.

CAUTION

Nowadays there are restrictions on the shipment of hazardous materials, eg. some types of lithium batteries.

Please, check the proper, safe, shipping mode, with the help of your courier, in the case the product is equipped with batteries.

2.5 To clean the meter

Use a dry, clean and non-abrasive cloth for cleaning the meter.

NOTICE

Do not use solvents, acids, turpentine, acetone or other similar products for cleaning the meter in order to avoid damaging it.

2.6 Power supply and battery recharging

EHP-50G has an internal rechargeable Li-Ion battery that can be recharged with the battery charger supplied with it.

Ensure that the batteries are fully charged before using the Analyzer for longest battery operation time.



The battery status is reported by the EHP-50 software



NOTE

ALWAYS connect the battery charger to the power supply **BEFORE** connecting it to the EHP-50G.

The battery charger has an internal protective circuit that will limit the output of current if there is any load when connecting to the mains.

Battery charger:

output: DC, 10 - 15 V, ~ 500 mA



Connector:



NOTE

In order to safeguard the features of the batteries, it is crucial to have a complete recharge before storing them for periods longer than 4 months. Therefore, it is warmly suggested recharging the batteries at least every 4 months even though the device has not been used.



NOTE

The minimum voltage level for operation is about 3.25V. The batteries must be recharged for lower voltages. Below such voltage the analyzer will turn OFF automatically.

The time required for recharging the batteries is about 4-5 hours. When the recharge is complete, this is indicated by the Led of the EHP-50G, with a rapidly blinking Green light.



NOTE

If the battery charger is plugged into the EHP-50G while the software is running, the analyzer will stop the measurements.

2.7 EHP-50G connected to a PC

Using the EHP-TS software measurements can be displayed on a PC. Please refer to chapter 4 of this manual for further instructions.

2.8 EHP-50G stand alone Mode

The EHP-50G in Stand-alone mode performs measurements without any connection to external devices and the data can be downloaded to any PC by using the provided EHP-50 Stand Alone mode software. Please refer to chapter 5 of this manual for further instructions.

2.9 EHP-50G with 8053B Portable field Meter / 8053 Display unit

The EHP-50G is connected to 8053 via optic fiber. Please refer to chapter 9 of this document and 8053 manual for further instructions.

2.10 Battery management

The battery autonomy of the Analyzer depending on its mode of operation.

TABLE 2-1 Battery autonomy				
		STAND ALONE MODE		
Span	Normal functioning Autonomy (hours)	1s Sample * Time domain	30s Sample * Spectrum analysis	60s Sample * Spectrum analysis
100 Hz	>10	---	>24	>24
200 Hz	>10	---	>24	>24
500 Hz	>9	---	>24	>24
1 kHz	>9	---	>24	>24
2 kHz	>8	---	>24	>24
10 kHz	>8	---	>24	>24
100 kHz	>8	---	>24	>24
400 kHz	>8	>8	>24	>24

* Maximum battery autonomy is 36 hours; it depends on EHP-50 Stand Alone software settings

2.11 Avoiding measurement errors

To avoid disturbing the measurements in progress, the user or other persons or mobile vehicles should stay at least 5 meters away from the Analyzers. We also recommend that the probe be set up a long way from metal objects or masses.

NOTICE

To perform correct measurements, the tripod TR-02A to hold EHP-50G is mandatory. Using an unsuitable support could influence the measurements that have been taken and, therefore, determine incorrect results. We recommend always using the isolated extension support supplied with EHP-50G for supporting the Analyzer. We also recommend that the TR-02A optional tripod be used for positioning EHP-50G at the height set out in the reference standards for the measurement in progress and that this configuration is always maintained so that the measurements taken can be repeated.



The intensity of the measured field mainly depends on its voltage and the geometry of the system under examination as well as the distance between the conductors and the measurement points. In the vicinity of cables, the reading of the field value may be very high and vary with the location of the probe.

From the definition of the potential difference between two points:

$$V_{21} = - \int_{r_1}^{r_2} \vec{E} dr$$

It is evident that, keeping the potential difference constant as the distance between the two points under examination decreases, the intensity of the field necessarily increases.

For example: the intensity of the electric field between two armatures of a parallel-plate capacitor situated at a distance of 0.1 m and having a potential difference of 100 V is equal to:

$$E = \frac{100V}{0,1m} = 1KV/m$$

It should be noted that a voltage of 100 V, in these conditions, generates a field of 1000 V/m. It is, therefore, possible, in the vicinity of 220 V conductors, that there may be a field, which is much higher than 220 V/m.

3 – EHP50-TS installation

3.1 Introduction

EHP50-TS is a useful software tool developed for remote PC control, through fibre optic link, of EHP family Electromagnetic field analyzers.

By means of the recently introduced USB-OC optical to USB converter, EHP-50G and EHP-200A can be connected to a PC USB port.

Using the former optical/RS232 adapter, the selected COM port should be assigned to the application software.

EHP50-TS software requires that at least one of the mentioned analyzers is connected to PC in order to run.

The EHP50-TS installation program automatically installs the driver for USB optical converter.

3.2 Hardware requirements

Minimum requirements:

- Processor: Pentium or equivalent
- 256 MB RAM
- At least 64 MB of free space on hard disk
- 1 free USB or RS232 port
- Windows Operating system™ XP/Vista/Win7/Win8/Win8.1/Win10



The User might have the need of administrator privileges to install the software in Windows Vista, Win7, Win8, Win8.1 and Win10; for further information see the next paragraph.



The EHP-50G requires an EHP50-TS software version 1.61, included in the EHP-TS software setup version 1.64 or later.



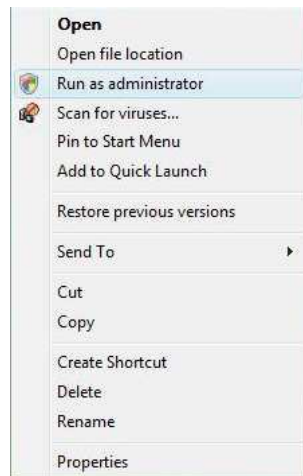
The new releases can be downloaded directly from the narda website <http://www.narda-sts.it>

3.3 Installing EHP50-TS Software

Before connecting the EM field analyzer to PC the EHP50-TS software installation should be performed:
Browse the Software Media and run the file “EHP50-TS Setup.exe”.



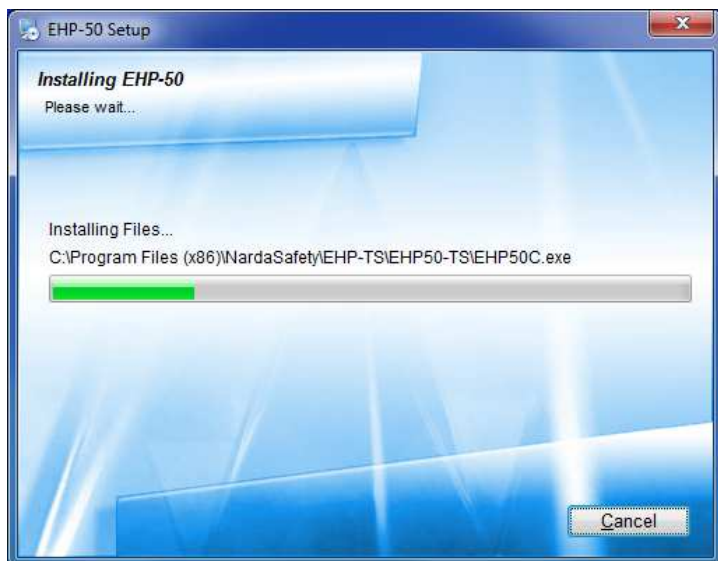
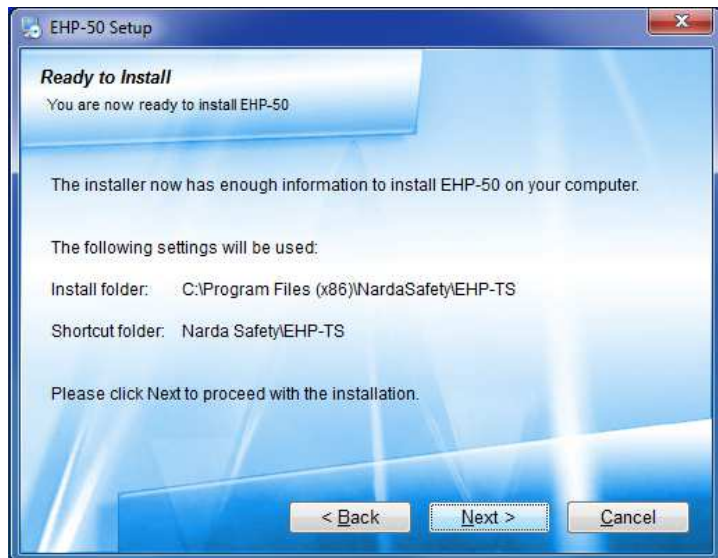
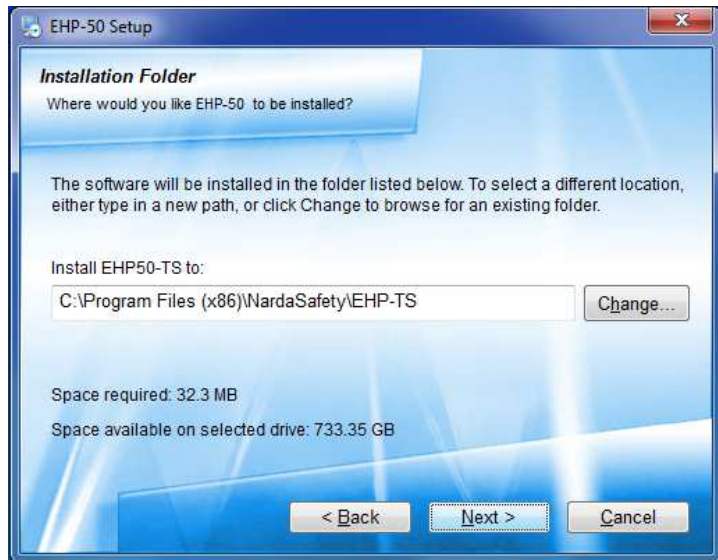
The User must have administrator privileges to install the EHP-TS software in Windows Vista, Win7, Win8, Win8.1 and Win10; right click on the program .exe file and click on “Run as administrator” to temporarily run the program or application as an administrator until close it (Win7, Win8, Win8.1 and Win10 also allows to mark an application so that it always runs with administrator rights).

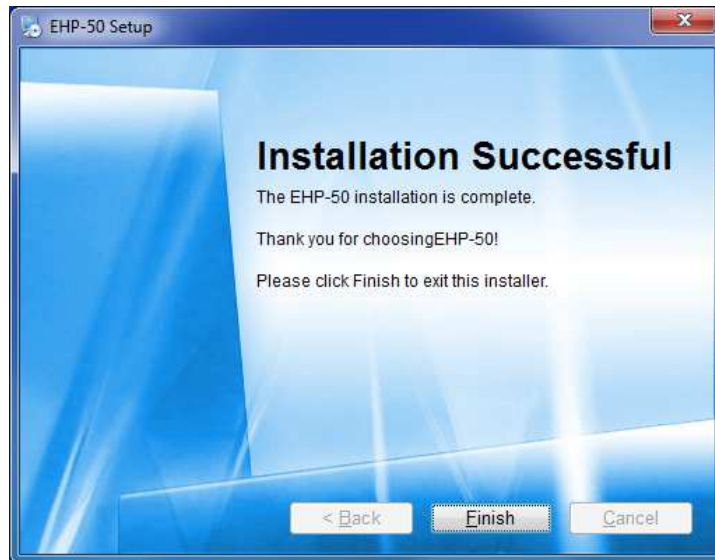


Follow set-up program instructions



Fig.3-1 EHP-TS installation






When asked for, reboot your system to complete installation

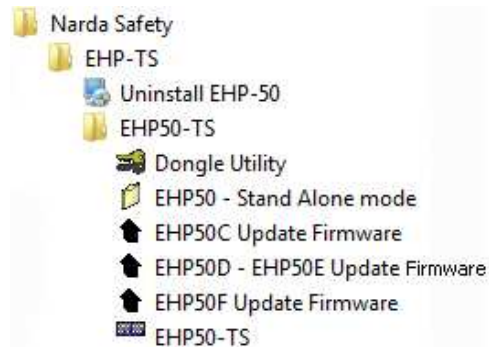


EHP50-TS software is now installed in your PC, you can remove it, if needed, simply running "Uninstall EHP50-TS" application (see chapter 7).

4 – EHP50-TS software

4.1 EHP50-TS Software description

EHP50-TS software includes different applications to be used with EHP family analyzers. Shortcuts are shown, selecting “all programs” from the windows XP “start” button or, using button or, using Windows Vista, Win7, Win8, Win8.1 and Win10 by clicking **Windows** () and **Programs**:



The EHP50-TS section includes:

Dongle Utility: allows to enable the function ordered such Options using the **40 Digit Activation Code** received from NARDA Italy.

EHP50 – Stand Alone Mode: this is a tool to program each parameter of the EHP-50G for Stand-alone operation, download the data stored on its internal memory to a PC and save them as a text file (see chapter 5).

EHP-50C Update Firmware: this is a tool to update EHP-50C firmware.

EHP-50D – EHP50E Update Firmware: this is a tool to update the firmware and FPGA of the EHP-50D and EHP-50E.

EHP-50F Update Firmware: this is a tool to update the firmware and FPGA of the EHP-50G (see chapter 6).

EHP50-TS: this program is used to perform live Time Domain and Spectrum Analysis measurements when an EHP-50G analyzer is connected to PC.



This chapter describes controls and functions provided by the EHP50-TS application only. For Stand Alone operations see chapter 5.



This manual describes applications for EHP-50G analyzer only. Some of the old tools could be discontinued.



EHP50-TS software does not work with EHP50A/B (products discontinued).



The EHP-50G requires an EHP50-TS software version 1.61 or higher

4.2 EHP-50G Installation

Turn off the EHP-50G, remove the optical bridge connector, connect the supplied fiber optic to the **OPTIC LINK** connector taking care that the grip recess points towards the center of the device, connect the other end of the fiber optic to the **OPTIC LINK** connector of the USB-OC and plug the converter to PC port.



Fig. 4-1 Optical bridge connector

NOTICE

Do not pull the fiber optic by holding onto the cable but use the connector so that the head does not get damaged. Avoid dirt and other particles getting into the transducers of the fiber optic.

4.3 EHP-50G on and Led status

Turn on EHP-50G by pushing the Red **POWER** button for one second (**ORANGE** LED for about 1 second is shown on button press). After that, the led turns off for 2 seconds, lights orange for about ½ second as an auto-check and then blinks red.



Pressing the **POWER** down button for more than 4 seconds forces the hardware of the apparatus to shut down. Then, it is necessary to wait several seconds before switching it on again.

4.4 EHP-50G battery Charging

For further information see chapter 2.

NOTICE

If the battery charger is plugged into the EHP-50G while the software is running, the analyzer will stop the measurements.

4.5 Run EHP50-TS application

To run the software double click on the EHP50-TS icon; a welcome screenshot will appear for a few seconds:



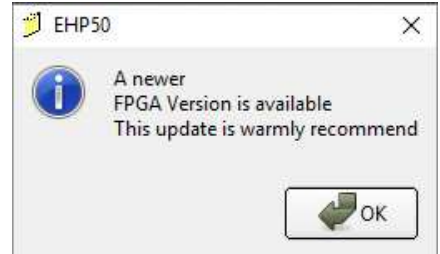
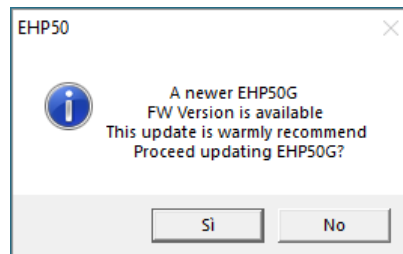
EHP-50G must be ON before running EHP50-TS control software. EHP-50G may not be correctly recognized if switched ON when the control software is already running.



The fiber optic of the EHP-50G can be disconnected and reconnected while in use. In this case, communication will be restarted automatically.



If the stored Firmware and/or FPGA version is older than what is available, the software will inform you that an update is needed. Confirm with OK and the Firmware/FPGA updating utility will be automatically run (for further information see chapter 7).



4.6 EHP50-TS
Main window

The EHP50-TS main window will be shown.
Once the connection has been successfully established, the EHP-50G led starts blinking **GREEN** Led

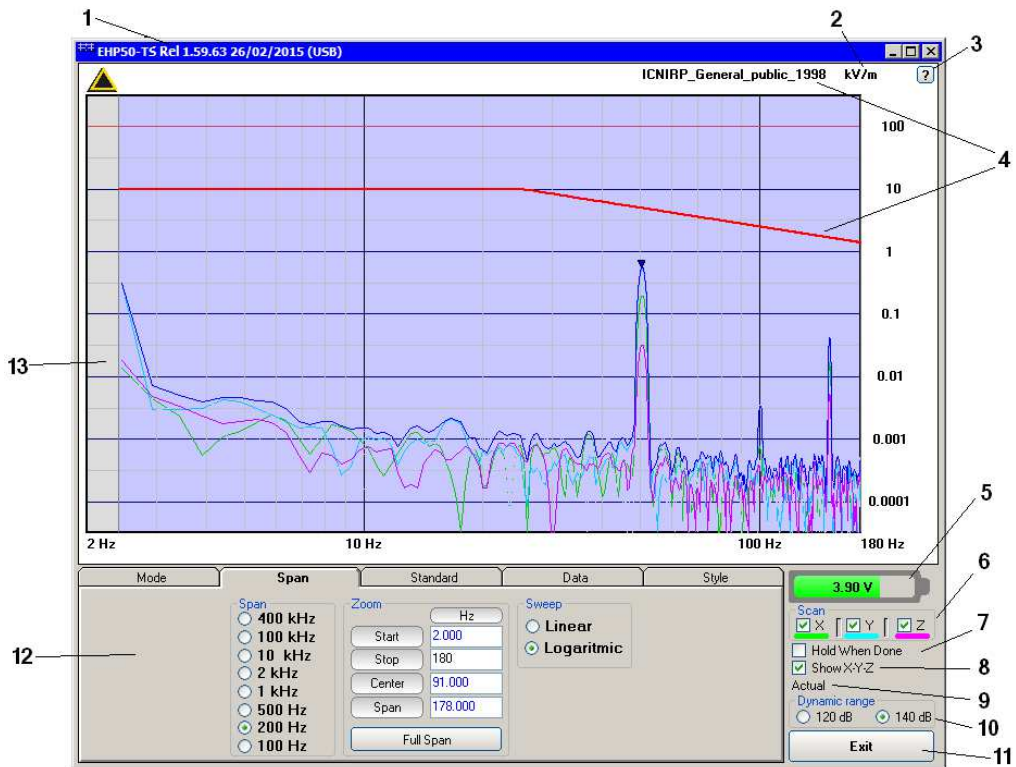


Fig.4-2 EHP50-TS Main Window

Description:

- 1 - EHP50-TS software release, (communication port)
- 2 - Shows unit
- 3 - Click "?" to display EHP-50G analyzer information
- 4 - Name and trace of selected Limit
- 5 - EHP-50G analyzer battery status
- 6 - **Scan** activation for each axis (default setting: all axis activated)
- 7 - **Hold When Done**: stops acquisition to allow data analysis as soon as all axis have been measured. Enable this function always with narrow SPAN if is necessary save TXT file. This to avoid difference between spectrum and acquired measures.
- 8 - **Show X-Y-Z**: to display or not the traces of single axis.
- 9 - Acquisition mode selected (see **Mode** section)
- 10 - **Dynamic range** (chosen between 120 and 140dB)
- 11 - **Exit** button to terminate application
- 12 - Control panel
- 13 - Display for time domain / spectrum analysis

In the control panel, commands are grouped in five different sections:

Mode: to set different operating modes

Span: to select a specific frequency span and, within the selected span, to set zoom function

Standard: to create and save limit traces, to activate a specific limit

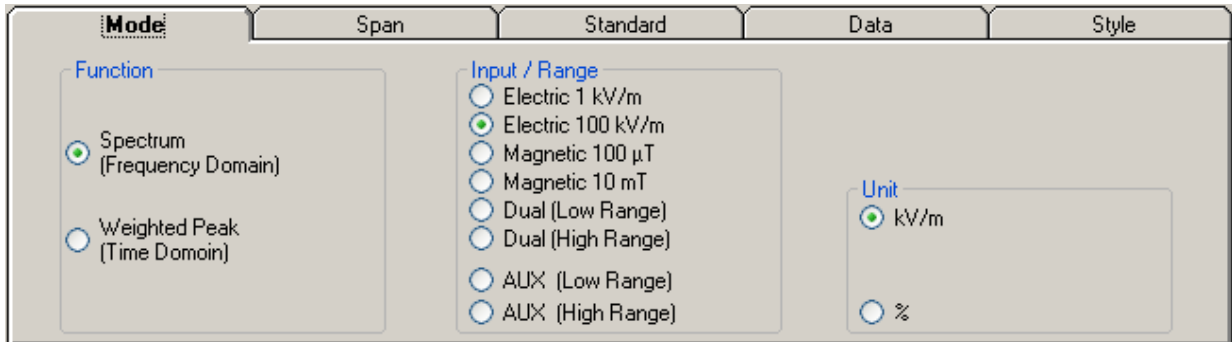
Data: to display measurement results and save data

Style: to change colour and button aspect

Each section can be activated with a mouse click.

4.7 Mode section

Mode section allows setting different acquisition modes, including Frequency and Time domains choice, as well as defining Electric, Magnetic field, or both in the same graph, and preferred Unit.



Function: measurements are displayed in different acquisition modes:

Spectrum: Frequency Domain sweeps are shown; display is continuously updated with new readings.

Weighted Peak: Time Domain shows a continue running graph over the specified period. This is a rolling peak. Once the first time period has been completed, oldest data are discarded and replaced by the newest ones, thus showing the values of the latest time period as specified.

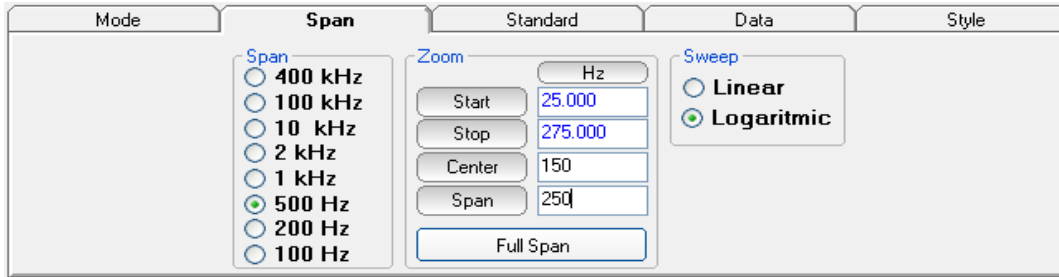
Input/Range: to select electric, magnetic or dual mode field (contemporary displaying of both Electric and Magnetic fields) in two different ranges. Dual (Low Range) shows Electric and Magnetic field which full range values are 1kV/m and 100μT respectively. Full scale ranges of Dual (High Range) are therefore 100kV/m and 10mT
The EHP-50G is also equipped with an AUX Input (MMCX connector, Zin 1 kΩ) for two different ranges. Aux (Low Range) shows fields which full scale value is 10 mV. Full scale of Aux (High Range) is therefore 1 V.

Unit: to select unit according to the Input setting. Electric field can be expressed in V/m and % of the limit only while Magnetic field can be expressed in A/m, μT (magnetic induction), mG or % of selected limit. Dual mode units are always V/m and A/m.



The unit “%” can be selected only if a Limit has been activated. Each spectrum line will then represent the field strength expressed as percent of the selected limit.

4.8 Span section



EHP-50G includes an FFT analyzer to show frequency spectrum of measured field. The span section includes the following:

Span: select one of the 8 available **spans**, keeping in mind that beside the EHP-50G minimum operating frequency of 1 Hz, the minimum **start** frequency of each Span is 1,2% of Span. For example, selecting 1 kHz span the minimum start frequency should be 12 Hz (automatically adjusted to the nearer step available of 12.5 Hz). This to avoid that the 0Hz signal, common to every spectrum analyzer, is included in the measurement result. Start frequency of 100 Hz and 200 Hz span is therefore 1 Hz (minimum operating frequency).

Zoom: EHP-50G performs selective measurement over the entire frequency range defined by the Span setting. EHP50-TS is able to select data in order to display a user specified frequency band within the selected span. For this purpose, the Zoom function can be set by typing the relevant parameters through the PC keyboard or, graphically, by means of the PC mouse. Within the selected frequency **span**, you can operate a zoom function to define a specific frequency range over which perform your measurement. For this purpose **Start**, **Stop**, **Center** and **Span** can be set to easily define frequencies to be displayed. The **Full Span** button deactivate the Zoom function showing the whole Span selected.



Right click and drag on the graph window to define graphically the Zoom frequency range.

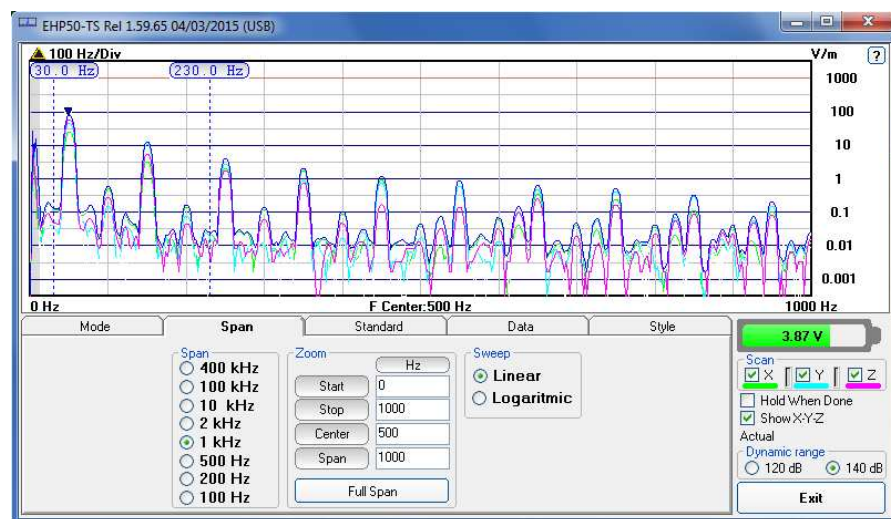


Fig.4-3 Defining frequency band through the PC mouse

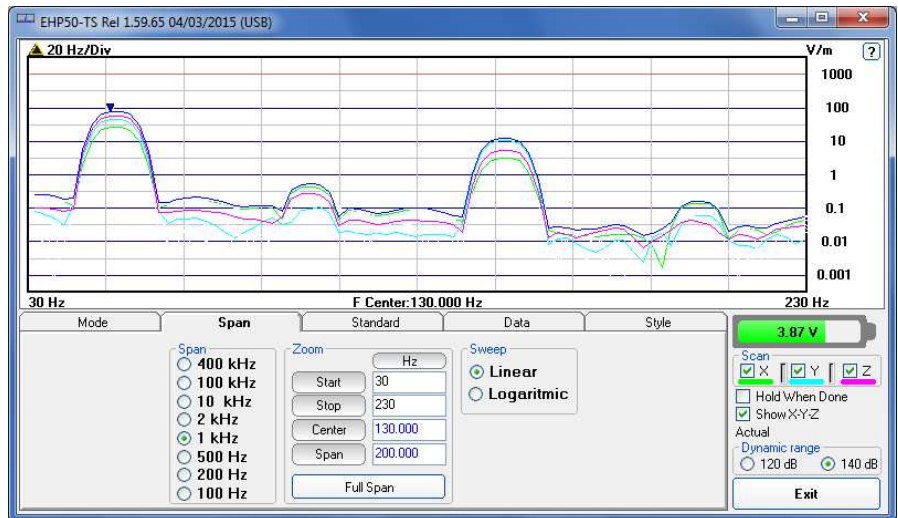


Fig.4-4 Zoom window

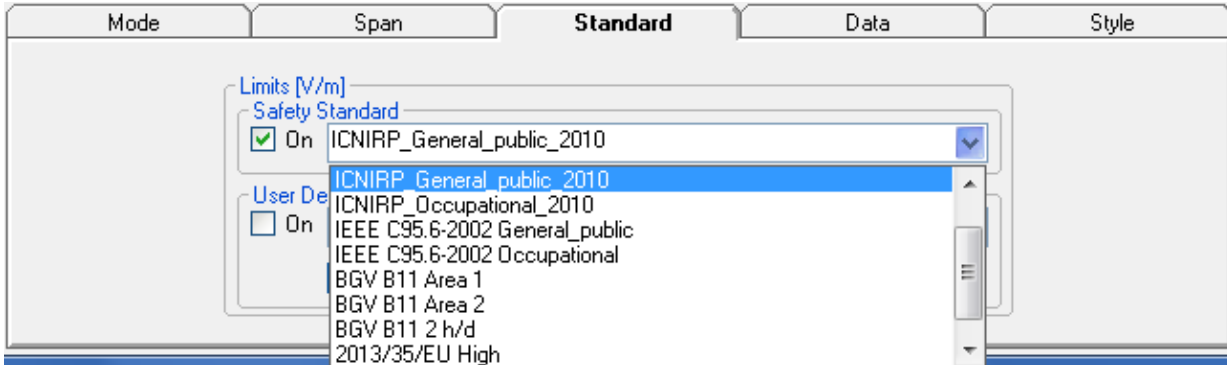
Also choosing the best scale range 120 dB or 140 dB can be helpful to better distinguish signals and disturbances.

Sweep: the two radio buttons in this box allow the user to select the **Linear** or **Logarithmic** frequency scale.

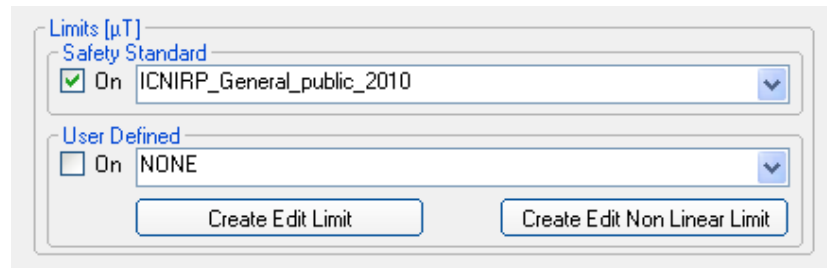
Logarithmic scale is used to emphasise and clearly display low frequencies even though high ones are included in the graph. High frequencies are therefore compressed to the high side of displayed range.

4.9 Standard

Standard section allows the user to select standard ICNIRP, IEEE, BGV and EC limits, already included by the software installation, as well as user's limits which can be created through the "Make Limit" function provided by this section.

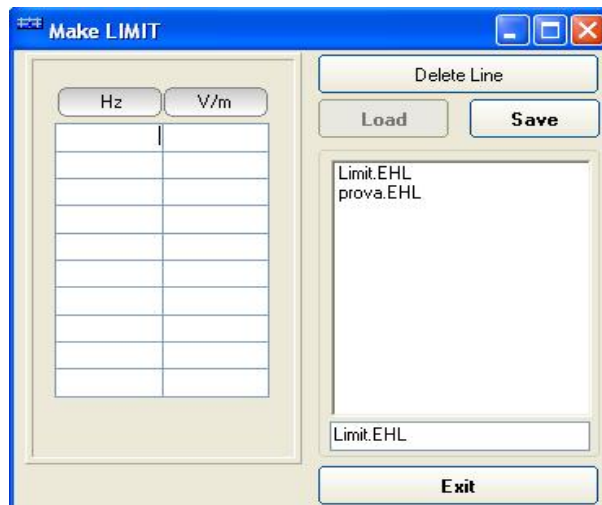


Safety Standard: This section can be used to load a default standard limit saved into the memory at the factory. Default limit list shows limits that are compatible to the actual setting only. If Electric field was selected in the Mode section, electric field limits only are displayed. No default limit is shown in case mG unit was selected.



User Defined: This section allows to select and activate a specific limit among limits created and saved by the user. They can be Linear or Non Linear (governed by a mathematic formula).

The **Edit Limit** button opens a window to edit linear limits and create new ones:

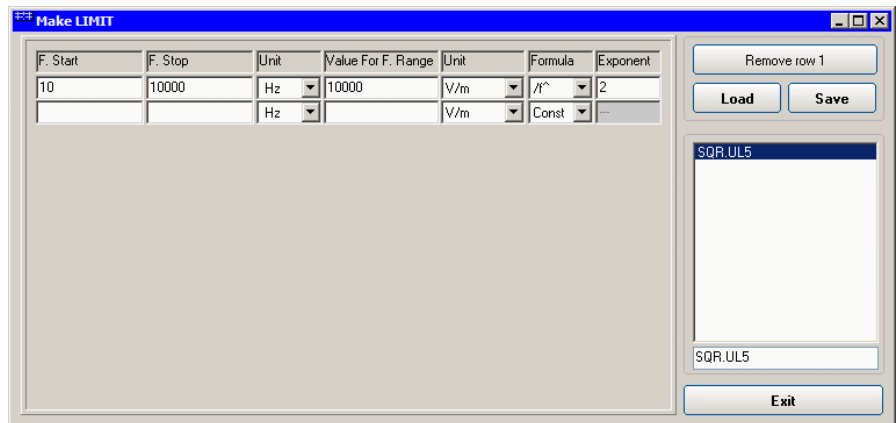


Type frequency and field strength for each point of the required limit and click save to save it under the program directory. The limit file will be created as a linear interpolation between specified points.



When the ICNIRP or IEEE limit is selected, the software automatically calculates the corresponding total integration of the measured signals, and compares the result with the threshold set by the standard, considering whether it is or is not exceeded.

The **Edit Non Linear Limit** button opens a window to edit those limits that are related to a mathematic formula, and create new ones:



Click **Load** to edit a previously saved limit.

Type in the Start and Stop frequencies in the appropriate boxes, and choose the right measurement Unit.

Introduce the strenght Value and choose its Unit.

Then choose the formula from the list and type the exponent value.

Click save to save it under the program directory. The limit file will be created as a calculation of the mathematic expression.



The Max Hold function is not available when the ICNIRP or IEEE limit is selected.

4.10 Data section

Even if EHP-50G takes measurement over the entire selected span, shown results are related to the displayed spectrum only, allowing thus detailed evaluation of user defineable frequency range through the zoom function.

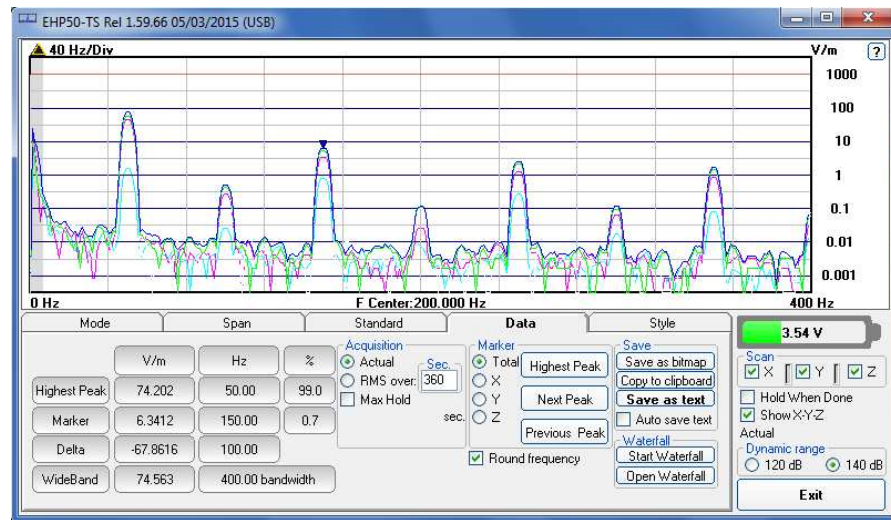


Fig.4-5 Data section

The gray band on the left side of the graph highlights signals below the minimum start frequency (1,2 % of Span) which are affected by residual 0 Hz peak. Calculation of Wideband result does not include any spectral line within the gray band.

Measurement result: the following values are shown in a table form:

Highest Peak: Maximum value within the displayed spectrum.

Shown parameters:

Highest Peak field strength in the selected Unit (V/m in the above picture)

Highest Peak frequency (Hz)

% of contribution to the WideBand result

Marker: you can place a marker anywhere on the spectrum display with a mouse click

Shown parameters:

Field strength at Marker frequency in the selected Unit (V/m in the above picture)

Marker frequency (Hz)

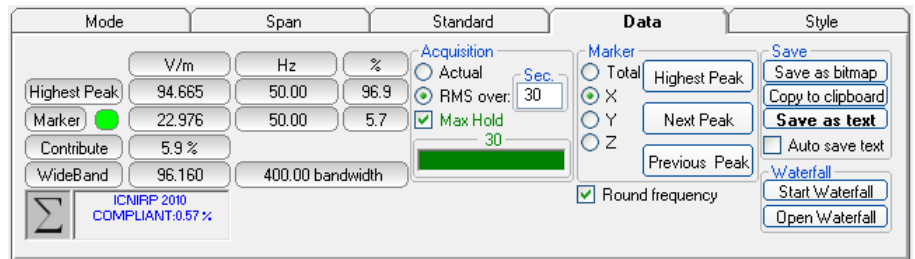
% of contribution to the WideBand result

Delta: Difference in Field strength and frequency (Hz) between Highest Peak and Marker

WideBand: integration over the displayed frequency band

It is the square sum of all contributions within the displayed spectrum. Result of calculation is the field strength expressed in the selected unit while "Bandwidth" is the difference between Stop and Start frequency.

Four additional frames, Acquisition, Marker, Save and Waterfall, are included in the Data section:



Acquisition: spectrum is displayed in different acquisition modes.

Here is the choice between instantaneous reading and Root Mean Squared over a certain period, which is set in the proper box. A Max Hold function is also available. When the RMS is activated, a progressive bar appears showing, step by step, how many seconds are already taken into account for the calculation of the result.

Actual: instantaneous values are shown; the display is continuously updated with new instantaneous readings.

RMS over: square average calculated over the specified time period (sec) is shown. This is a moving average. Once the first time period has been completed, oldest data is discarded to be replaced by the newest one showing thus the average value of the latest time period as specified.

Max Hold: the maximum field strength value of each frequency step is retained and displayed since the Max Hold function has been activated. Every spectral line is therefore updated only if the new value is greater than the previously displayed one showing thus the Maximum of each spectral line since the Max hold function was activated.

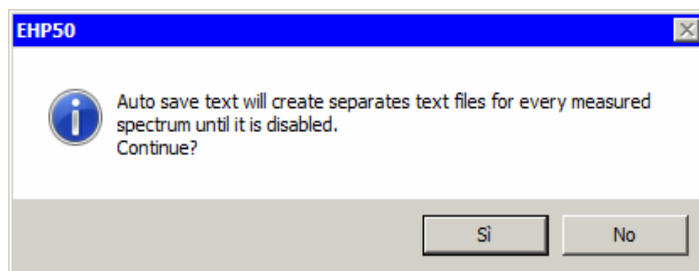
Marker: in this area you can select on which trace to place the Marker: specific axis (X,Y,Z) or Total result.

Three dedicated buttons, Highest Peak, Next Peak and Previous Peak, allow Marker positioning over peaks shown by the graph.

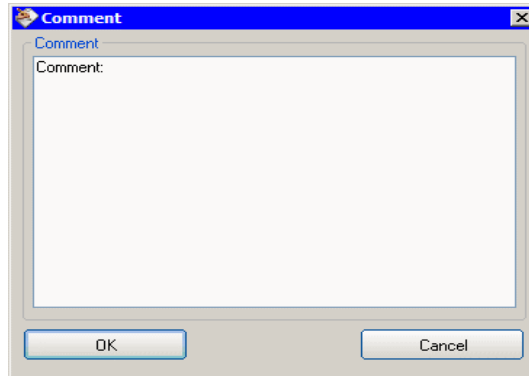
If activated, Limit checkbox allows displaying the Limit value corresponding to the Marker frequency.

Save: three buttons in this area to save spectrum as a picture file (.bmp), as a text file (.txt) or to copy the spectrum picture to the Windows Clipboard.

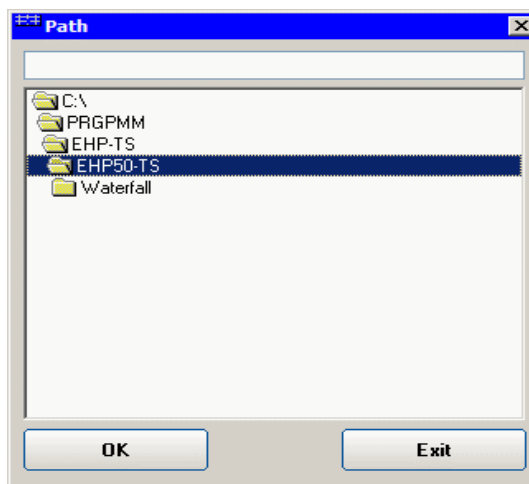
Auto save text: it is a functionality provided to automatically save a text file containing the measurements data and information.



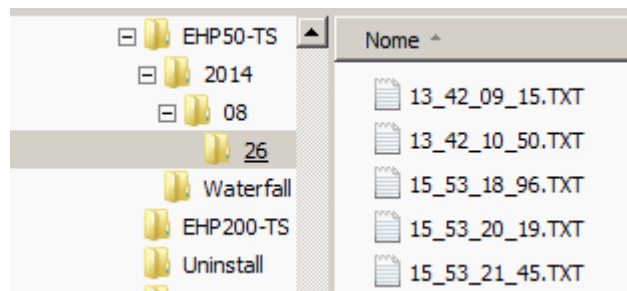
It is also possible to insert a comment.



The user can select the path where the files will be stored.



The saved files will be structured as following:



Under the selected folder (EHP50-TS in the example) a folder will be created and called like the current year (ex. 2014).
 Inside this folder, another one will be created and called like the current month (ex. 08, that is to say August).
 Again inside a folder will be created for each day of saving (ex. 26).
 The measurements will be in this last folder and their names will be in the format *hh_mm_ss_cc.TXT*


```
EHP50-TS Spectrum 26/08/14 13:42:09 Narda Safety Test Solutions
EHP50G Rev 4.20
Span: 2000 Hz
WideBand: 556.54 V/m (24 - 2002) Hz
Highest Peak 536.49 V/m @ 49 Hz
Acquisition: Actual
```

Freq Hz	Total V/m	X V/m	Y V/m	Z V/m
0	0.0004	0.0002	0.0002	0.0002
5	37.986	31.159	11.130	18.659
10	20.870	17.023	6.2038	10.357
15	5.8903	4.7538	1.9176	2.9017
20	0.3747	0.1965	0.2578	0.1881
24	0.2747	0.1511	0.1755	0.1478
29	4.0882	0.7086	0.2787	4.0166
34	76.889	14.076	4.4910	75.456
39	308.36	56.620	18.341	302.56
44	511.53	94.021	30.659	501.87
49	536.49	98.720	32.356	526.34
54	514.77	94.841	31.249	504.99
59	386.52	71.196	23.586	379.17
63	143.97	26.484	8.7990	141.24

Fig.4-6 Auto save text extract example

Round frequency: when this label is ticked, the frequency indication of the Marker is corrected to the closest round value, thus avoiding approximation errors.

Waterfall: press Start Waterfall to run the function, or Open Waterfall to load previously saved measurements.



The Max Hold function is not available when the ICNIRP or IEEE limit is selected.

4.10.1 Waterfall

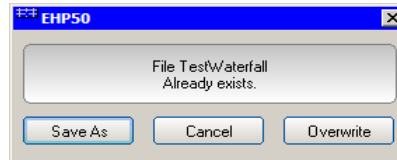
In addition to the spectrum view, another representation has been introduced in the software, commonly called Waterfall.

The advantage of this view is that the disturbances are shown in a tridimensional plot. Two dimensions are, as usual, frequency and level, and the third is the time.

In this way it is possible to detect and track time-varying signals.

The ranges for Frequency and Level are the same as the Spectrum view.

When pressing the **Start Waterfall** button, a pop-up message can appear warning the operator if a file with the same name as the one in use, already exists.



Press **Save As** to maintain the original file, or **Overwrite** to cancel the old measurement with the starting new one.

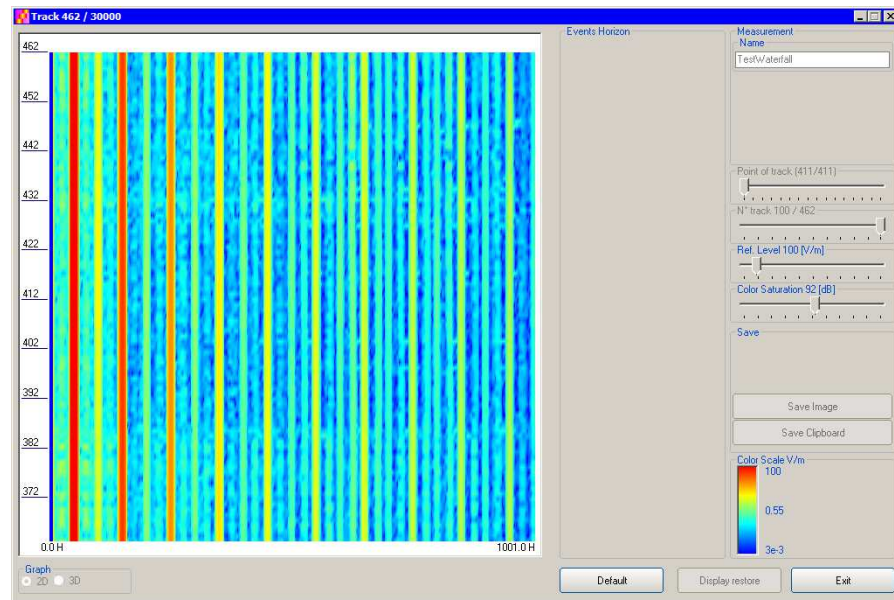


Fig.4-7 Waterfall - Graph 2D

In the **Graph 2D**, the horizontal axis represents Frequency, the vertical axis is the Time and the colour is the Level.

The signal amplitude is represented in a scale of arbitrary colours, usually the darker the lower and the brighter the higher, like in thermography.

The Color Scale referenced to levels and units, is indicated on the right bottom of the screen.

The status-bar shows the number of tracks already acquired and the maximum available.

On the right two sliders permit to set the preferred Reference Level and Color Saturation (level dynamic range).

Press the Default button to reload standard settings.

When entering the **Open Waterfall** function a screen similar to the following appears:

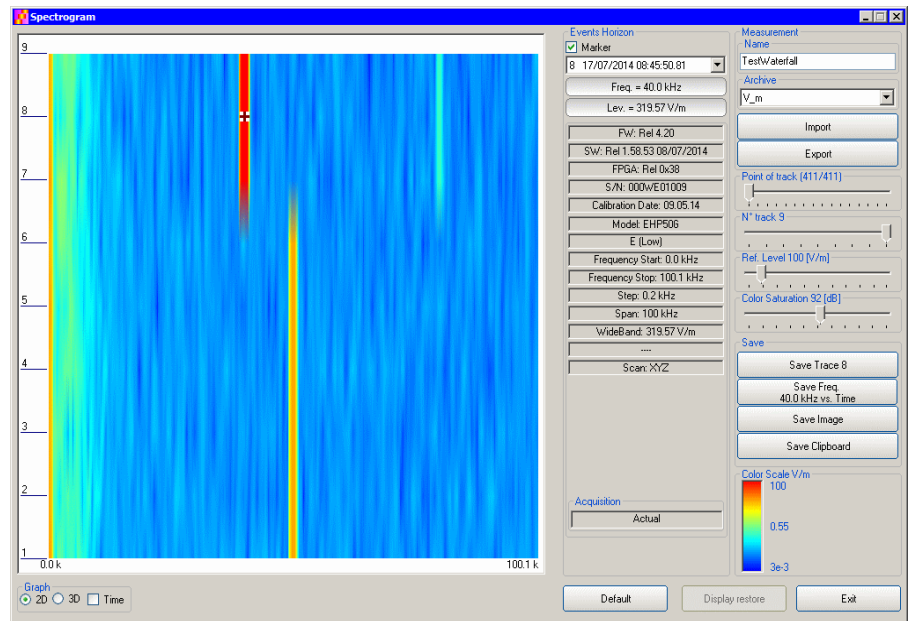


Fig.4-8 Waterfall Main Window

Like during the scan, on the left is the spectrogram of the measurements. The column in the middle, called Events Horizon, reports the Marker with its frequency and level and many parameters of the measurement setup and of the probe used.

On the right, in addition to Ref. Level and Color Saturation, there are two more sliders, useful to set the frequency resolution (Point of Track) and the time interval (N° track).

It is also possible to Import or Export a full acquisition by pressing the corresponding button in the Archive box. The name of the measurement can be typed in the Name box and from the list it is possible to select an already saved one.

In the Save box two or four buttons (depending on the marker activation) can be pressed to save:

- a single trace (Levels vs Frequencies)
- a single Frequency (Levels vs Time)
- an image of the spectrogram
- the clipboard

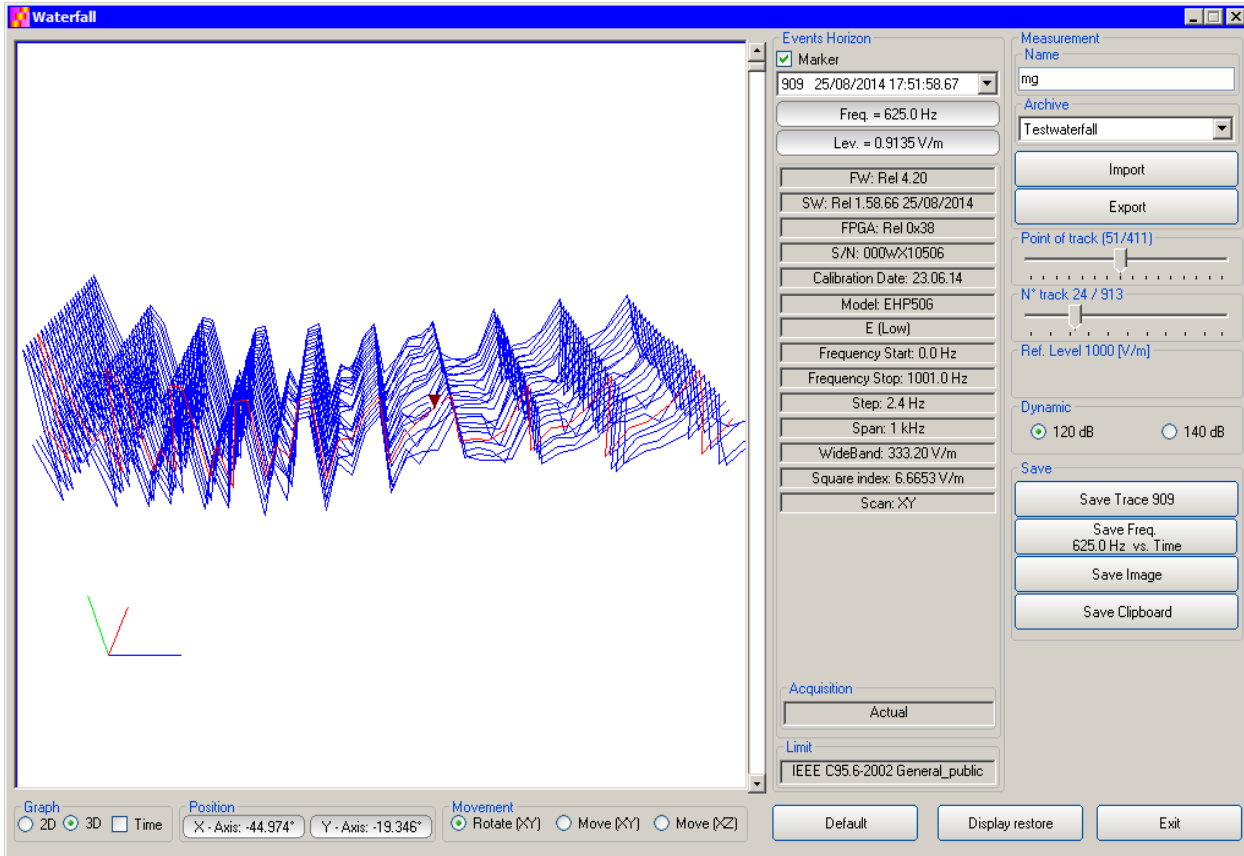


Fig.4-9 Waterfall - Graph 3D

In the **Graph 3D**, one axis (blue) represents Frequency, another the Level (green) and the third the Time (red). So the Frequency can be on the horizontal axis, the Level on the vertical axis and the Time in depth.

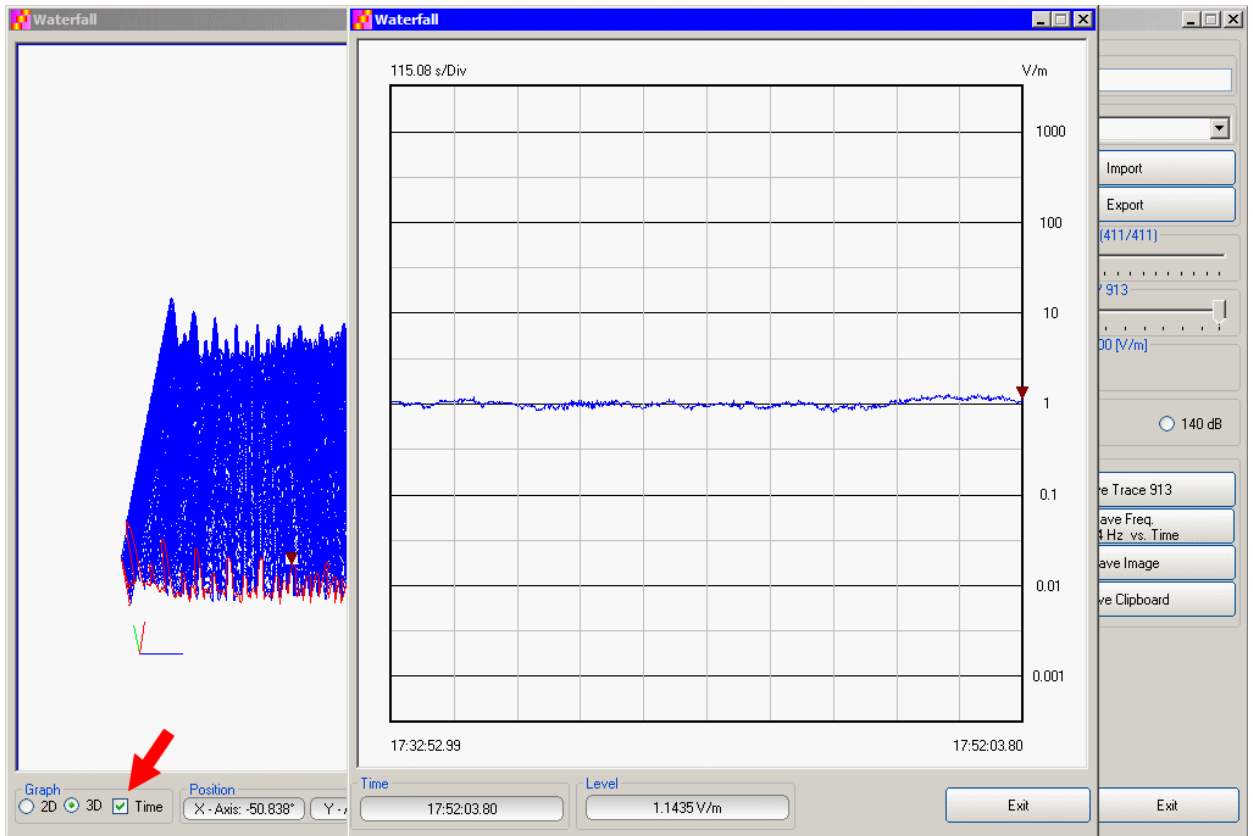
For this mode, another box, called **Movement**, will appear. Selecting the appropriate functions, you can move, rotate or zoom the view to your liking, using the mouse.

Another option of the **Graph 3D**, the Time plot, is available when the Marker is active.

Tick the Time label to enter this view.

A new window pops up and the plot represents the level at the marker frequency versus time.

The horizontal axis of the grid is the time and the vertical axis is the field level.



The Marker can be moved with the mouse to look for the desired frequency.

In the 3D view also the dynamic can be selected between 120 and 140 dB, to help for the best identification of disturbances.

4.10.1.1 Data recording

The subsequent spectra are automatically recorded and saved in a single file *.WF5 localized in the folder Waterfall in the program root, inclusive of all the analyzer settings.

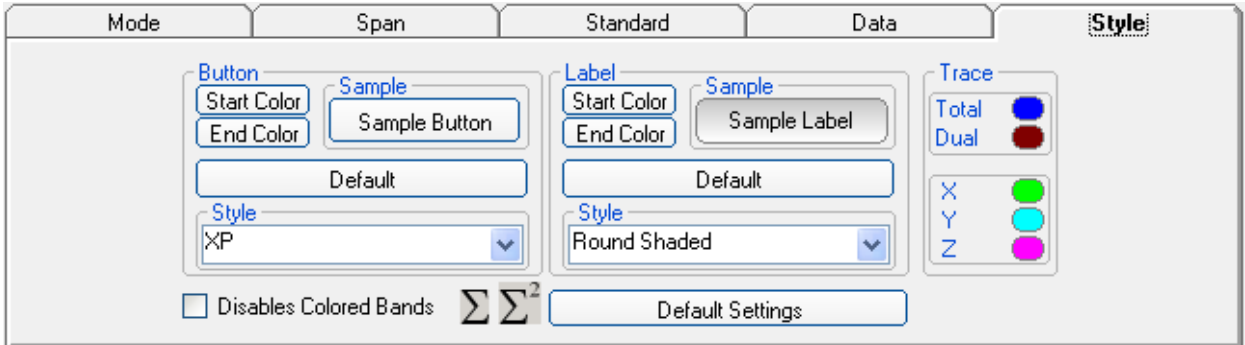
The stored files can be recalled when in Data mode or at startup entering the Open Waterfall window.

The filename is set by the operator prior to starting the test and it is indicated at the upper right corner of the Waterfall window.

The maximum number of spectra that can be recorded is of 30.000 and it is indicated, together with the current track number, in the status bar of the Waterfall window.

4.11 Style section

This unit concerns the appearance of the program.



Buttons and labels styles can be selected from a **Style** list

Start and **End Color** buttons allow selection from a color palette

Sample Button and **Sample Label** show the appearance preview

Default button to set appearance to the default parameters

Trace to set trace colours by means of the colour palette

Text file separator allow to specify column separator.

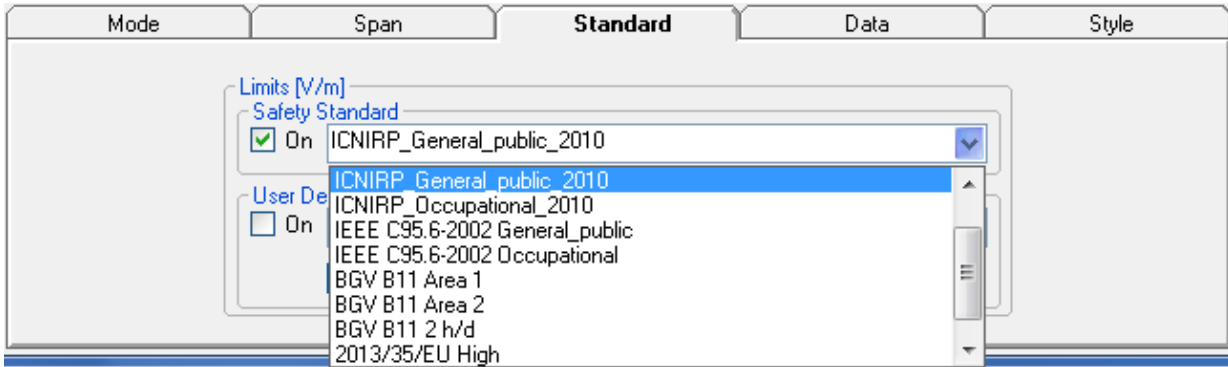
Tick the **Disable colored bands** box to avoid highlighting the bands for which the software calculates the ICNIRP values.

Press **Default Settings** button to completely restore the initial aspect.

4.12 ICNIRP

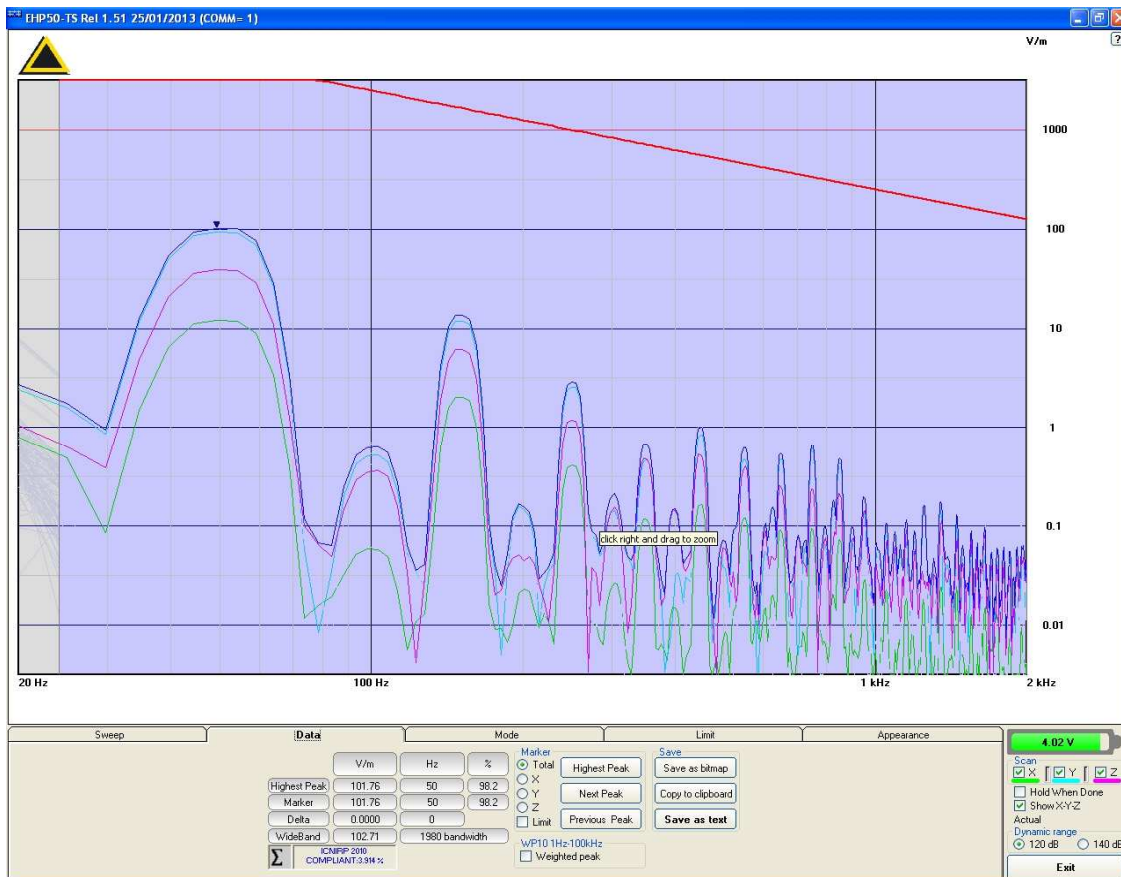
The **International Commission on Non-Ionizing Radiation Protection** establishes guidelines for limiting EMF exposure that could affect human health.

Standard section allows the user to select **standard ICNIRP limits**, already included by the software installation.



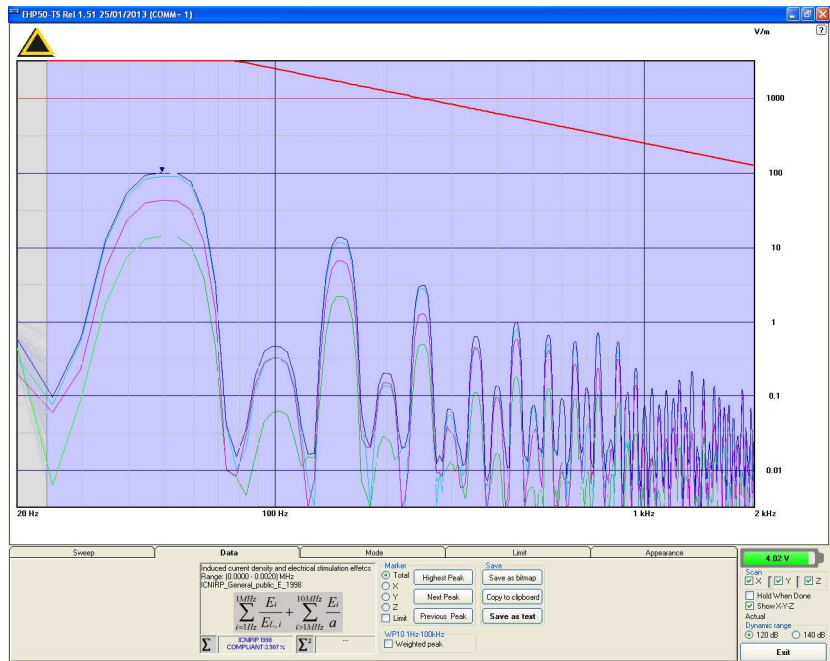
NOTE

When the **ICNIRP limit** is selected, the software automatically calculates the corresponding total integration of the measured signals, and compares the result with the threshold set by the standard, considering whether it is or is not exceeded.

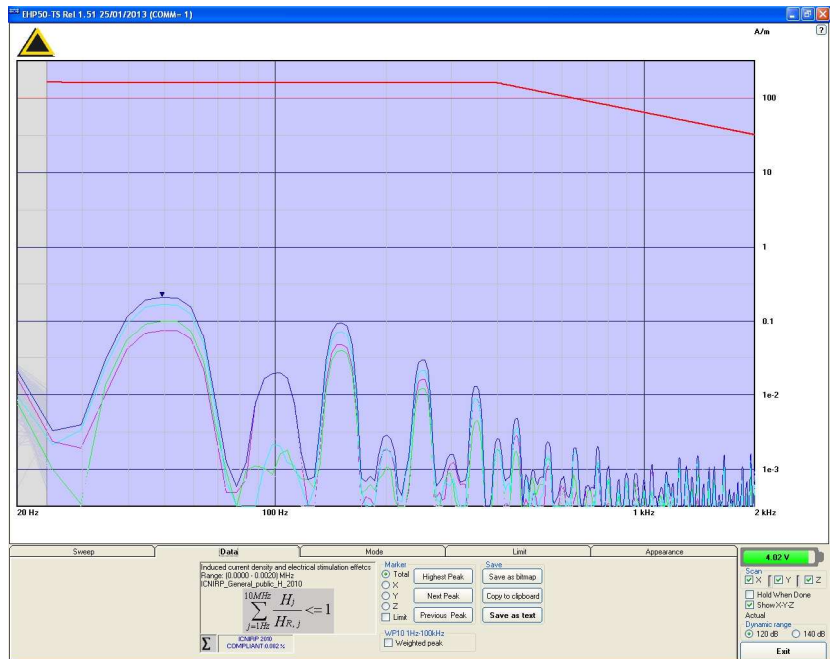


NOTE

The calculation of the ICNIRP value is performed if all three axes are enabled



In the screenshot above it is depicted an example how the software shows the calculation of the ICNIRP value for the Electric Field measurement.



In the screenshot above it is depicted an example how the software shows the calculation of the ICNIRP value for the Magnetic Field measurement.

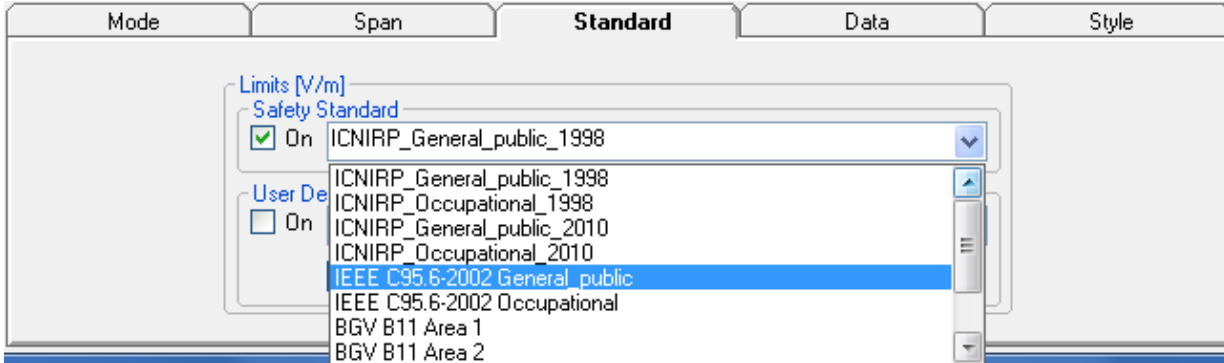


The limit cannot be activated when using Dual Mode.

4.13 IEEE

One of the purposes of the **Institute of Electrical and Electronic Engineers, Inc. ("IEEE")** is to establish exposure standards.

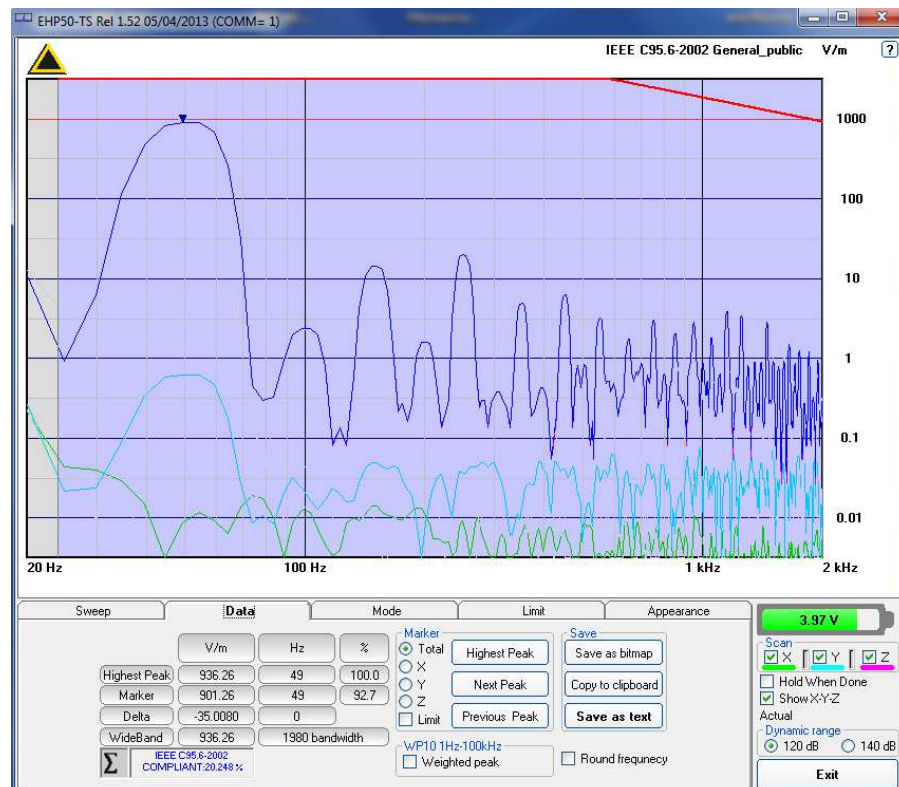
Standard section allows the user to select **standard IEEE limits**, already included by the software installation.



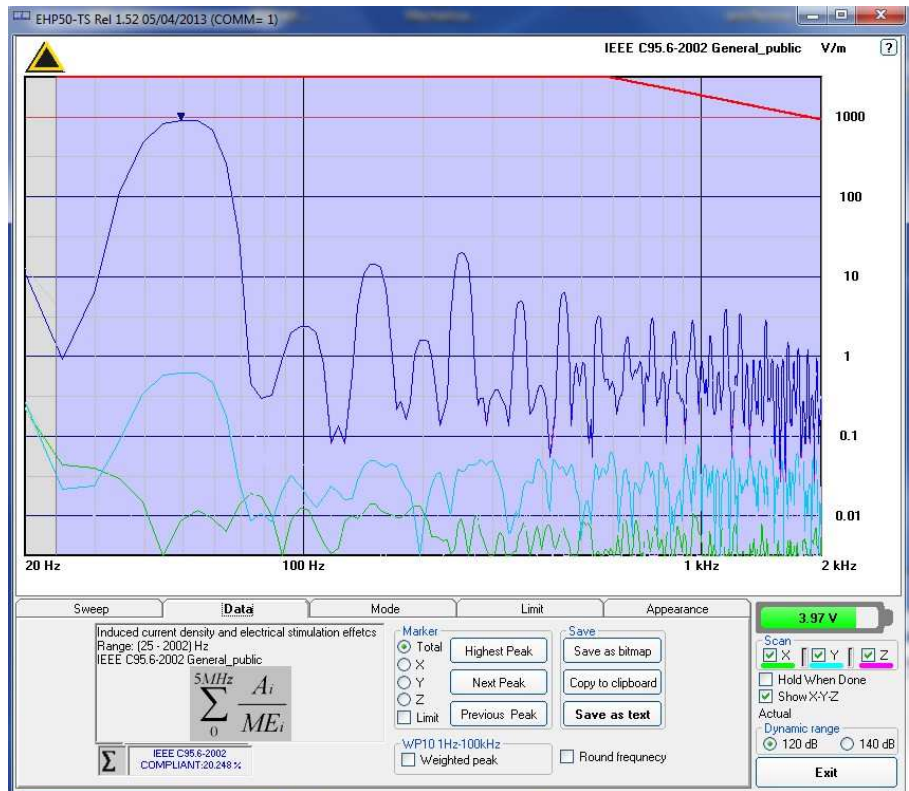
When the **IEEE limit** is selected, the software automatically calculates the corresponding total integration of the measured signals, and compares the result with the threshold set by the standard, considering whether it is or is not exceeded.



With coherent signals the result can be overestimated



The calculation of the IEEE value is performed if all three axes are enabled



In the screenshot above it is depicted an example how the software shows the calculation of the IEEE value for the Electric Field measurement.



The limit cannot be activated when using Dual Mode.

4.14 Weighted Peak Function (Time Domain) [Optional]

The EHP-50G Weighted Peak (Time Domain) option performs test in the range 1 Hz to 400 kHz to comply with the informative annex of the ICNIRP Guidelines 2010 (appendix “**Determination of the weighted peak exposure**”) for coherent signal source.



The “Weighted Peak” option is a payment special function implemented in the EHP-50G. Please contact your local Narda distributor for details.

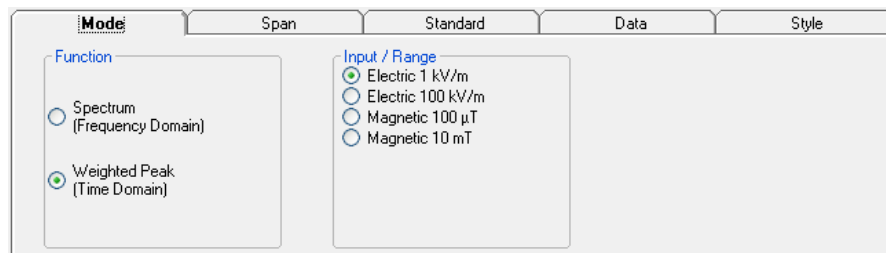
The current legislation proposes limits for electromagnetic fields, the value of which depends on the frequency.

When exposed to a sinusoidal field, it is relatively simple to relate the measurement of the field to the reference limit, as the frequency is known or easily measurable.

In case of multi-frequency fields, pulsed, non-sinusoidal waveforms, the exposure assessment in relation to the limit becomes more complex.

In these cases, typical of industrial environments, it is not possible to relate the amplitude of the field to the limit value at a specific frequency, as the spectral content of the signal can be very complex (many frequencies are present at the same time).

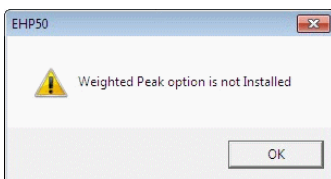
The ICNIRP guidelines propose a method for the evaluation of multi-frequency fields, that consists of the sum of the field strength of the individual spectral components related to the limit corresponding to the frequency of each individual component. This method is appropriate in the presence of incoherent components.



4.14.1 Weighted Peak requirements

The Weighted Peak function needs the following in the list order:

- EHP-50G with Weighted Peak Option unblocked through the activation code Utility.
- In the Mode Section, select the Function “Weighted Peak (Time Domain)”
- In the Standard section set one of the available standards, such as, for example, the ICNIRP 2010 limits for occupational or general public exposure.
- In the Mode section select one of the ranges among the Electric 1 kV/m, Electric 100 kV/m, Magnetic 100uT or Magnetic 10mT.
- In the Data section, enter the desired Hold Time.



Popup message that warns when WP option is blocked.

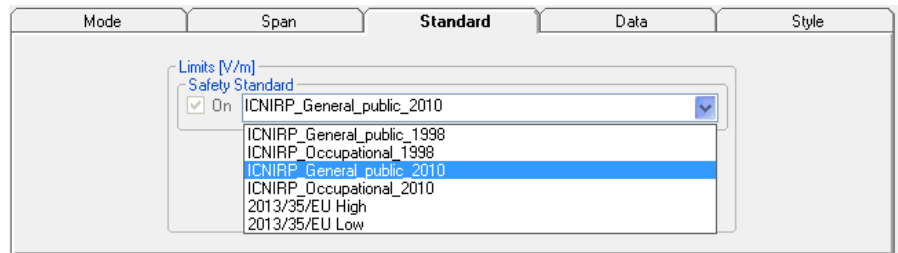
4.14.1.1 Weighted Peak Activation Procedure

To enable the WP mode please use the Dongle Utility embedded in the EHP50-TS software.

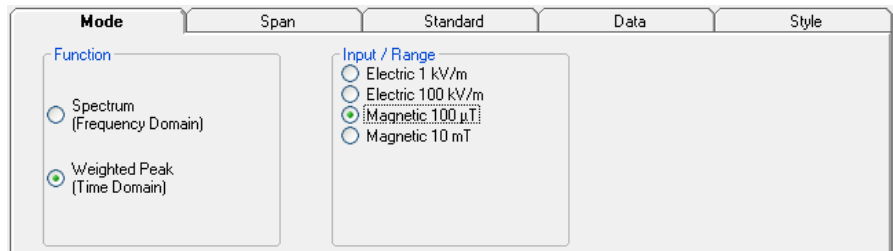


For further information on software installation refer to the “Update firmware and Activation code Utility” chapter 6.

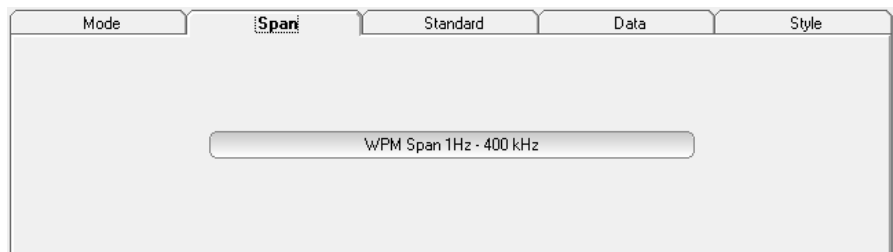
4.14.2 EHP50-TS Settings The **Standard** section allows the user to select one of the **standard ICNIRP or EU limits** for occupational or general public exposure, already included by the software installation.



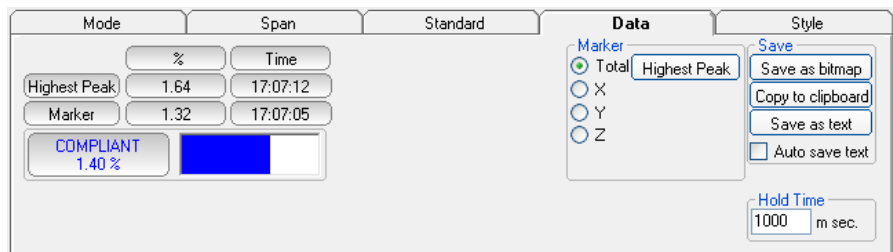
In the **Mode** section you can select **Electric 1 kV/m** or **Electric 100 kV/m** or **Magnetic 100uT** or **Magnetic 10mT**.



The **Span** section displays the frequency range, which is always full range 1 Hz to 400 kHz in Weighted Peak Mode.

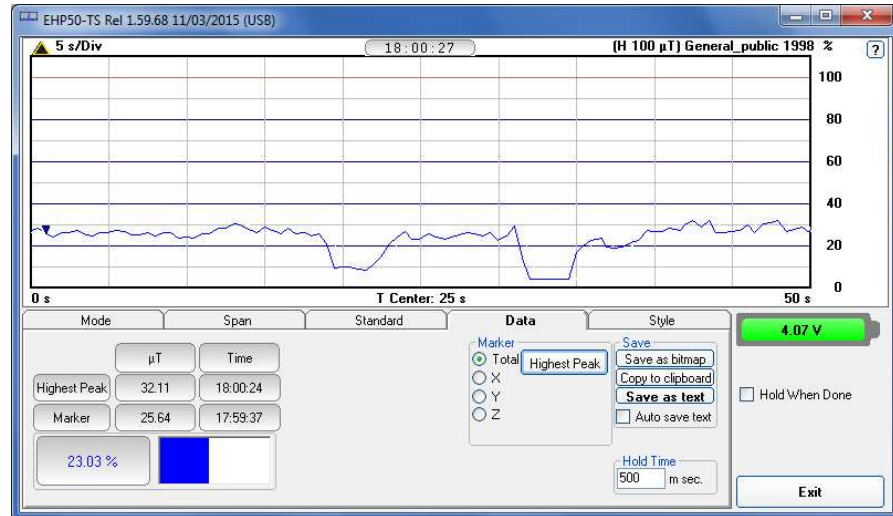


The **Data** section allows the user to read the measurements for the highest peak and Marker, to choose the axis and set the desired Hold Time.



4.14.3 Weighted Peak mode

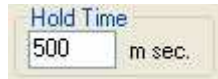
Once the Weighted Peak has been enabled, the software shows the result of the calculation and its graph over the time.



Result in percentage over the set hold time:



The User can set the Hold Time (in milliseconds):



The Hold Time is the time resolution of the graph. During the Hold Time the Weighted Peak results will be collected and the maximum value will be shown in the graph.

Press the enter key to enter the Hold time value.

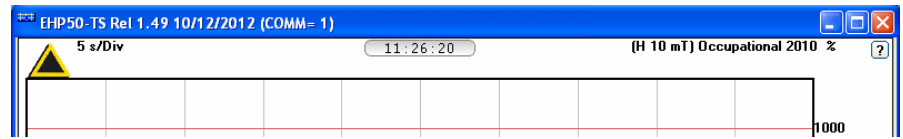
The minimum hold time is of 500 milliseconds.

The maximum is 10 minutes.

The time span of the graph is 200 times the hold time. The rolling measurement memory deletes all values that date back longer than the time period set.



The limit selected is shown in the higher right corner of the graph.

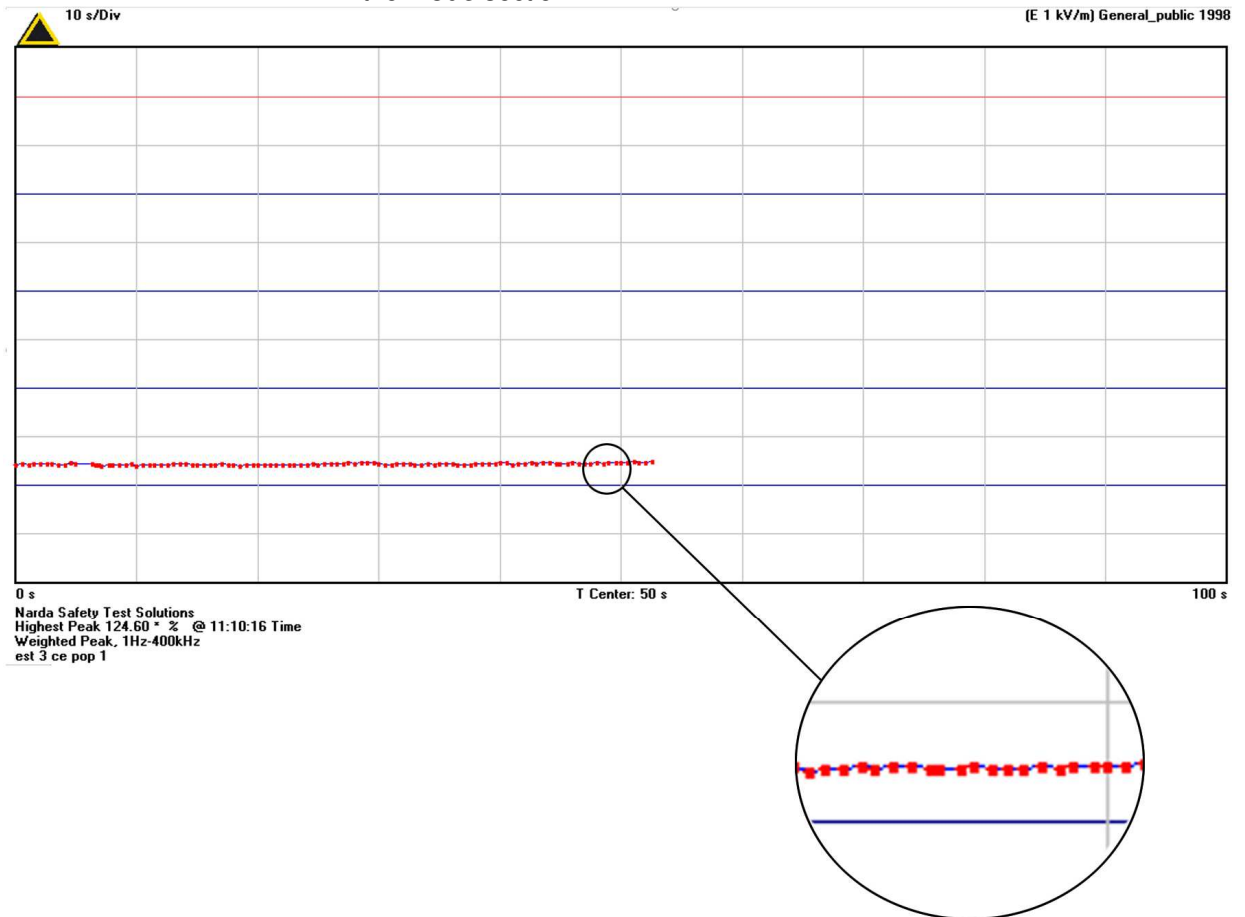


The full scale is automatically adapted to the field and the limit selected.

In the centre, above the grid of the graph, the time indication is the actual time, the instant in which the measurement is made, at the end of the hold time step.

When the result is close or over the limit selected, the value corresponding will be marked by a red dot in the graph and with the asterisk (*) in the text report (see §4.6).

In this case, if not activated, it is suggested to increase the dynamic settable in the **Mode** section.



4.14.3.1 Dynamic ranges The User should make use the following information to choose the proper setting for the desired measurement.
For every situation, the best choice is to adopt the lower Full Scale available (for example 100 μ T) until the meter indicates an over-range warning; when it happens, the User should switch the meter to the higher Full Scale setting (as for the example above, 10 mT).

Electric Field (E)

Standard	Full scale	1 Hz – 40 Hz	40 Hz – 400 kHz
ICNIRP 1998 Gen.Pub.	1 kV/m	< 55 %	< 100 %
	100 kV/m	> 55 %	> 55 %
ICNIRP 1998 Occup.	1 kV/m	< 25 %	< 50 %
	100 kV/m	> 10 %	> 10 %
ICNIRP 2010 Gen.Pub.	1 kV/m	< 70 %	< 70%
	100 kV/m	> 55 %	> 55 %
ICNIRP 2010 Occup.	1 kV/m	< 50 %	< 100 %
	100 kV/m	> 35 %	> 35 %
2013/35/EU Low	1 kV/m	< 50 %	< 100 %
	100 kV/m	> 35 %	> 35 %
2013/35/EU High	1 kV/m	< 15 %	< 15 %
	100 kV/m	> 15 %	> 15 %

The table above shows the dynamic ranges for each standard and setting, for Electric field measurements.

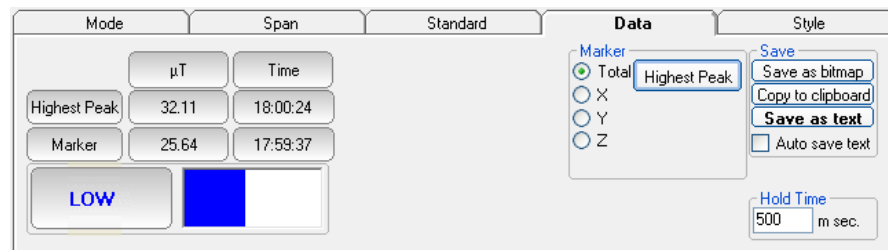
Magnetic field (H)

Standard	Full scale	1 Hz – 40 Hz	40 Hz – 400 kHz
ICNIRP 1998 Gen.Pub.	100 μ T	< 15 %	< 100 %
	10 mT	> 15 %	> 70 %
ICNIRP 1998 Occup.	100 μ T	< 5 %	< 100 %
	10 mT	> 5 %	> 24 %
ICNIRP 2010 Gen.Pub.	100 μ T	< 50 %	< 100%
	10 mT	> 25 %	> 25 %
ICNIRP 2010 Occup.	100 μ T	< 25 %	< 50 %
	10 mT	> 9 %	> 9 %
2013/35/EU Low	100 μ T	< 25 %	< 50 %
	10 mT	> 9 %	> 9 %
2013/35/EU High	100 μ T	< 2 %	< 25 %
	10 mT	> 2 %	> 8 %
2013/35/EU Limbs	100 μ T	< 1 %	< 5 %
	10 mT	> 1 %	> 3 %

The table above shows the dynamic ranges for each standard and setting, for magnetic field measurements.



For convenience, a noise threshold has been established, under which the field indication becomes “LOW”, as in the example below.



4.15 Additional functions provided by EHP200-TS

EHP-200A/AC electromagnetic field analyzer provides Electric and Magnetic field selective measurement in the 9kHz – 30MHz frequency range (EHP-200A) and in the 3kHz – 30MHz frequency range (EHP-200AC).

Even though there is no difference from EHP-50G regarding minimal physical overall dimensions and sensor positioning, a high frequency selective receiver is housed within this product.

Additional settings and functions are therefore available.

Regarding settings, Span can be set as desired within the entire frequency range and required RBW filter can be selected down to 1kHz allowing thus optimum selectivity.

As requested by reference standards, Average value can be automatically calculated over 6 minutes as well as over customer defineable time periods.

An important advantage, which is provided thanks to the Dual (E and H), Tri-axial sensor technology implemented in EHP-200A/AC is the new concept of power density calculation which, unlike common practice, makes use of both E and H real measurements providing thus accurate results which are still valid in both Near and Far Field conditions.

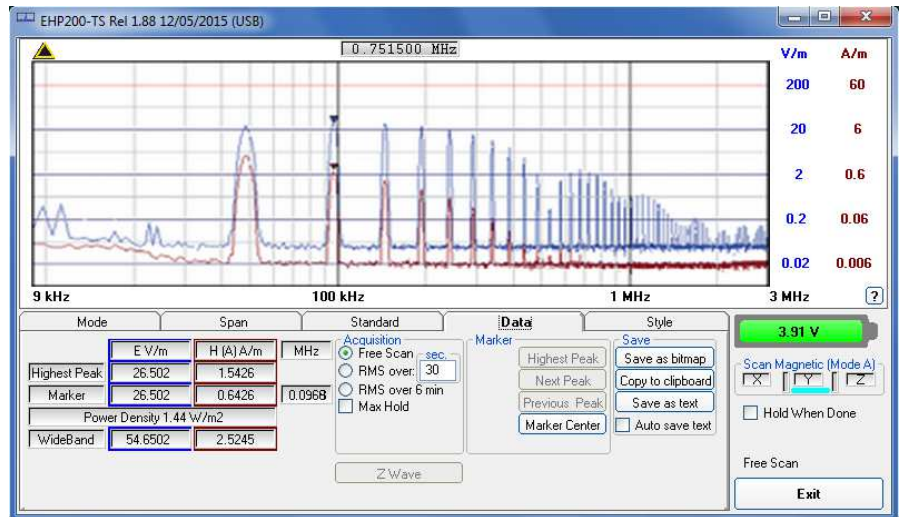


Fig.4-10 Both electric and magnetic fields can be displayed on the same graph.

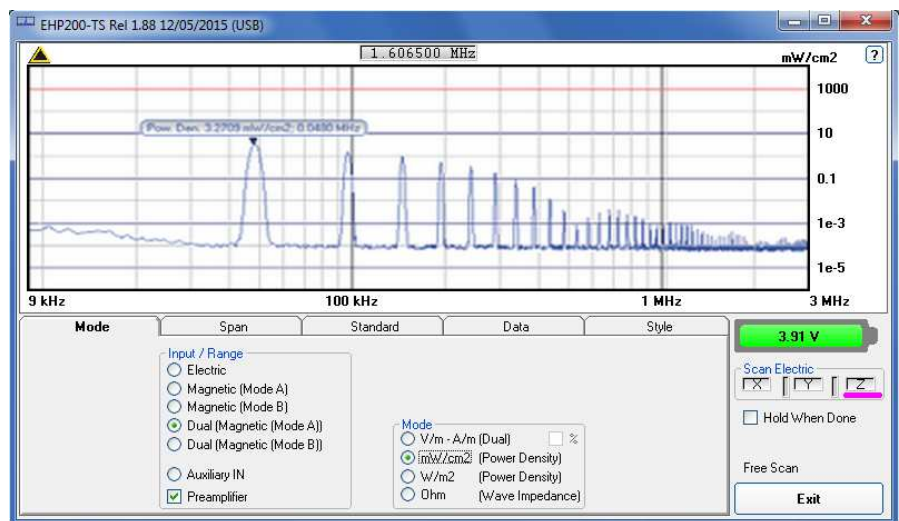


Fig.4-11 Power density spectrum is calculated over real electric and magnetic field measurement and therefore applicable to both far and near field conditions.

New wave impedance function is provided too by selecting the Ohm unit. This function automatically searches and displays result at frequencies showing effective fied ratio calculation.

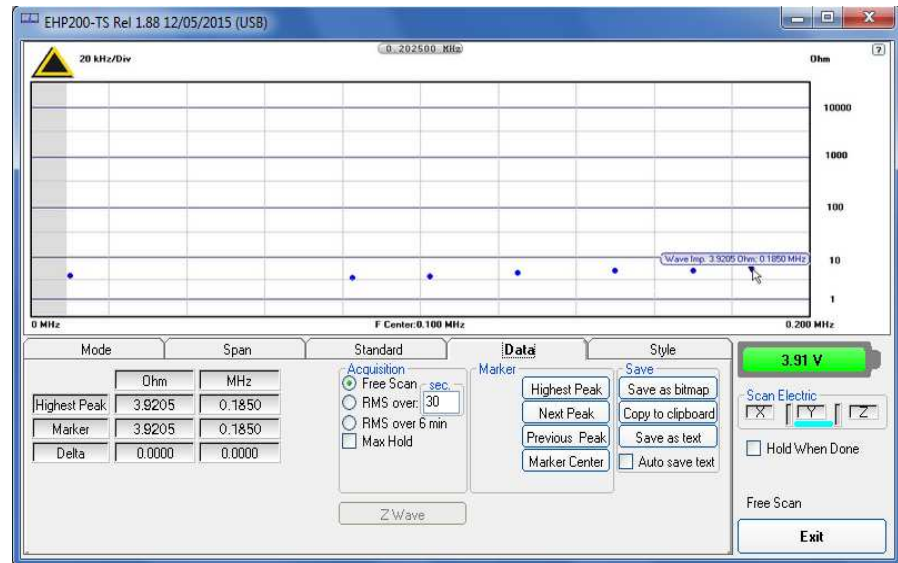


Fig.4-12 New wave impedance function



Please refer to EHP-200A/AC user's manual for detailed informations regarding EHP200-TS application software.

5 - EHP-50G Stand Alone mode

5.1 Stand Alone mode description

The EHP-50G in Stand-alone mode performs Frequency or Time Domain measurements without any connection to external devices and store data up to 36 hours on its internal memory. The provided EHP-50 Stand Alone software allows setting different parameters for stand-alone operation, transfer to any PC the data acquired and display them as a table.

Some stand-alone applications:

- Magnetic fields near voltage transformers
- Measurements in proximity of power line
- Safety measurement at worker's site
- Measurements close to machines, air conditioning systems, home appliances etc.
- Development of new products

5.2 EHP-50G Installation

To perform the stand-alone acquisition follow the instructions step-by-step:

- 1) Install EHP-50 TS software (see chapter 3)
- 2) Remove the optical bridge connector
- 3) Connect the EHP-50G to the PC (see § 4.2)
- 4) Switch the unit on (see § 4.3)
- 5) Configure the unit with EHP-50 Stand Alone software
- 6) Ensure that the batteries are fully charged (see chapter 2)
- 7) Disconnect the fibre optic cable
- 8) Switch the unit off
- 9) Plug the optical bridge connector removed at step 2
- 10) Install the unit on the site to be monitored (see § 2.11)
- 11) Switch the unit on
- 12) Downloading data



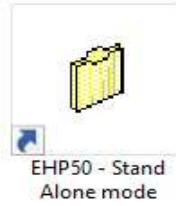
This chapter describes controls and functions provided by the EHP50 Stand alone mode only. For EHP50-TS application see chapter 4.



**EHP-50G must be ON before running EHP50 - Stand Alone mode software.
EHP-50G may not be correctly recognized if switched ON when the control software is already running.**

**5.3 EHP-50
Stand-alone
main window**

To run the software double click on the EHP50 - Stand Alone mode icon.



The EHP50 - Stand Alone mode main window will be shown:

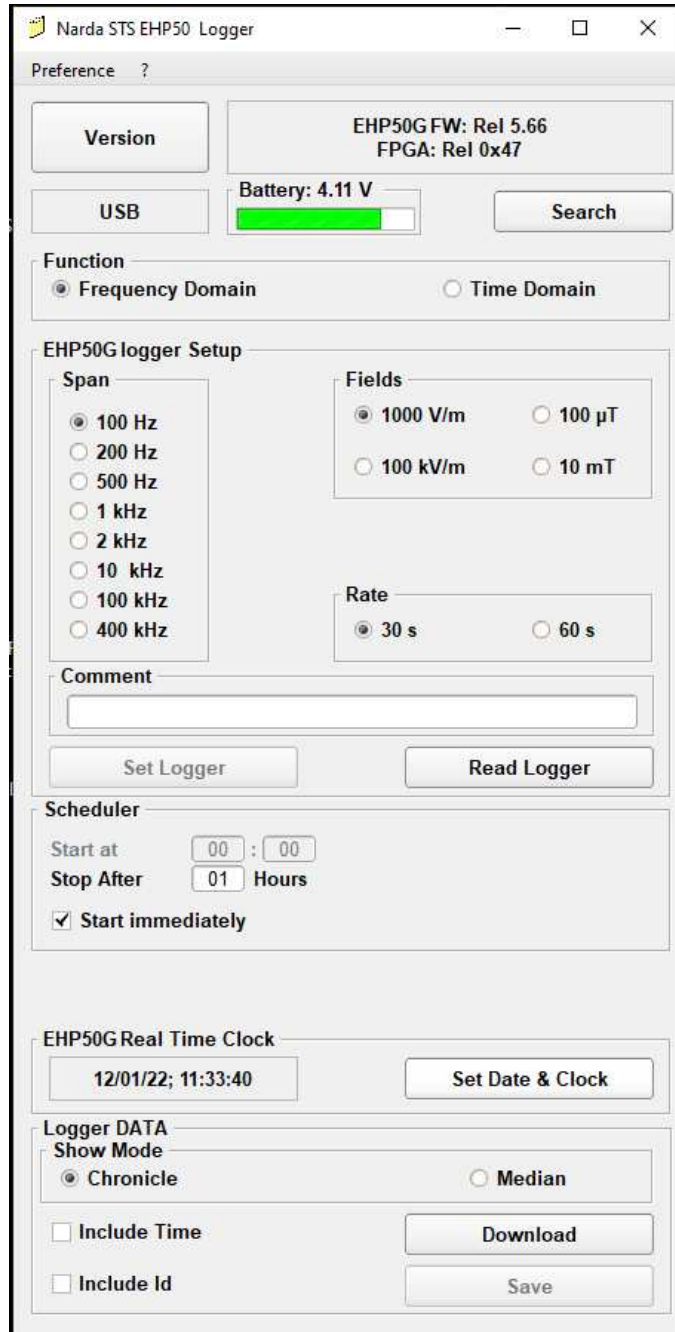
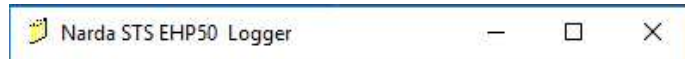


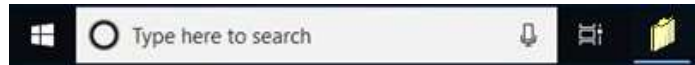
Fig. 5-1 EHP-50 Stand-Alone Main window in frequency Domain

5.4 Title bar

The Title bar shows the application name and control buttons to minimize to icon, enlarge/restore the main window and exit the program.

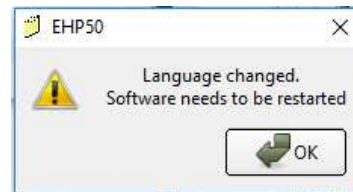
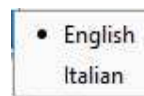


When minimizing the software is displayed in the Windows application bar at the bottom of screen.



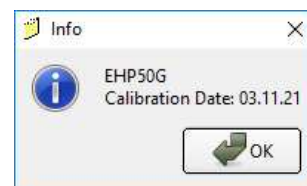
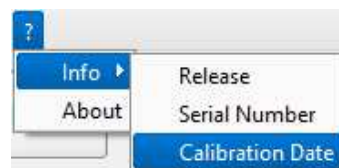
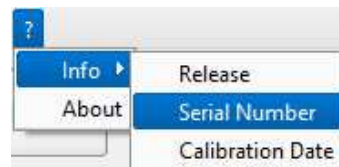
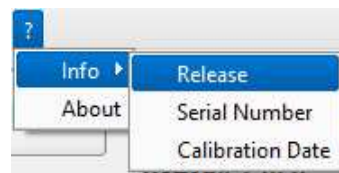
5.5 Preference

The program language can be chosen under the **Preference** menu. Once selected a new language, confirm with **OK** to restart the software:



5.6 Info

- **Info:** Probe model, current EHP-50 Logger software release and data, EHP-50G serial number and latest probe calibration.



- **About:** Manufacturer information.



5.7 Use of EHP-50 Stand-alone application

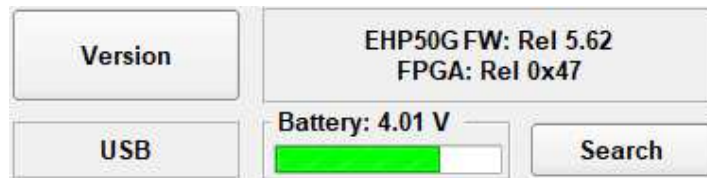
If the EHP-50G communication is not correct or battery charger is plugged, a blinking “Looking for EHP50G” message and red bar will appear.



Connect the device to the PC port and press the search button to establish communication.

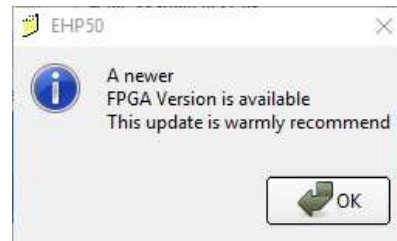
Once the connection has been established, the EHP-50G led starts blinking **GREEN** Led and the software will show the EHP-50G Firmware release, FPGA release and battery level.

Press **Version** button to query EHP-50G Firmware release, FPGA release and battery level



If the stored Firmware and/or FPGA version is older than what is available, the software will inform you that an update is needed. It is important to update the EHP-50G in order to use all the new functions added; confirm with **OK**.

For further information, see chapter 6 Updating Firmware.



To use the “Weighted Peak” payment special function the EHP-50G firmware release must be 5.62 or higher; please contact your local Narda distributor for details.

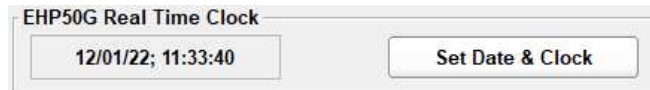


To enable the Weighted Peak option please use the Dongle Utility embedded in the EHP50-TS software (see chapter 6).

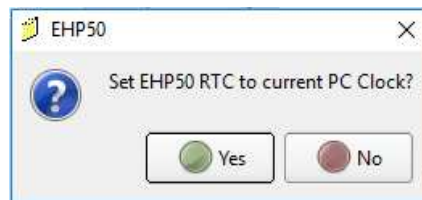
5.8 Read Logger button Press **Read Logger** button to read the settings of the field analyzer. The **Set Logger** button will not be available unless you change some parameters.



Use the **Set Date & Clock** button to update or change the analyzer internal clock and synchronize it with the time set in the PC.

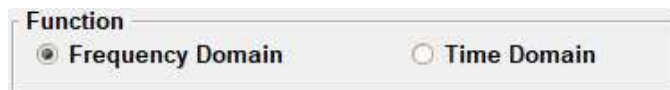


The following message appears:



Answering **Yes**, the software change data and clock on the EHP-50G.

5.9 Function section In the **Function** section, set which method shall be used to perform the measurements, if **Frequency Domain** or **Time Domain**.



Frequency Domain: frequency domain displays how much of the signal exists within a given frequency band.

Time Domain (Weighted Peak): time domain method shows how a signal changes over time.



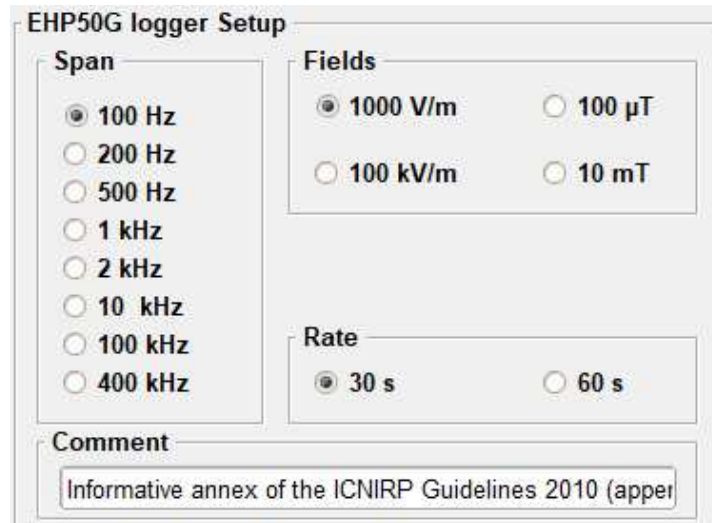
The explanation concerning how the **Frequency Domain** and the **Time Domain (Weighted Peak function)** works, can be found in chapter 4 of this manual.



If the “**Weighted Peak**” option in the EHP-50G is not active, the **Function** section is hide and the analyzer works in **Frequency domain mode** only.

5.10 EHP50G Logger setup section

In the **EHP50G Logger setup** section, select the EHP-50G settings like **Fields, Span, storing Rate** and **Comments**

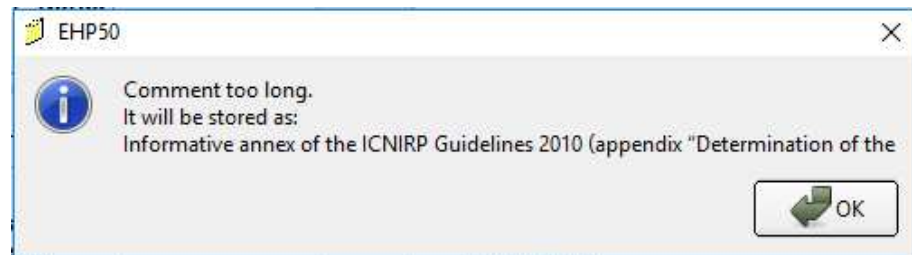


In the **Fields** section select Electric or Magnetic field in different ranges: **Electric 1000 V/m or 100 kV/m, Magnetic 100uT or 10mT**

In the Frequency Domain the analysis can be performed among eight different **Span** values and the data are saved in the field analyzer at the **Rate** of 30 or 60 seconds; the rate setting affects use of the memory and battery duration.

Instead in Time Domain the **Span** section is full range 1 Hz to 400 kHz and the **Rate** is 1s as standard; the battery autonomy depends on how long the analyzer stored data (see **Scheduler** section).

A **Comment** can be written and shown on the text report; up to a maximum of 80 characters are displayed and a warning message will appear:



5.11 Scheduler section

5.11.1 Scheduler section in Frequency Domain

In Frequency Domain the **Scheduler** programming consists of setting a scheduled time to start storing data on the EHP-50G and defining how long performs the analysis. The field analyzer can be set in two different ways:

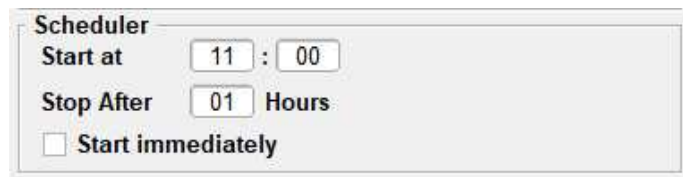
1) **Start immediately** is enabled . Immediately after being switched on, the EHP-50G begins to record data for the number of hours set under **Stop after** at the set measuring rate; afterwards, the EHP-50G is switched off.



The screenshot shows a control panel titled "Scheduler". It contains three main settings: "Start at" is set to "11 : 00", "Stop After" is set to "01 Hours", and the "Start immediately" checkbox is checked.

2) **Start immediately** disabled. Once the EHP-50G is switched on, the analyzer starts to acquire the data at the scheduled time set in **Start at** (hh:mm) and performs the analysis ...

In case the schedule time is set earlier than the current time clock, the EHP-50G will perform the analysis the next day at the time entered



The screenshot shows the same "Scheduler" control panel as above, but the "Start immediately" checkbox is now unchecked.

In the above example the EHP-50G store data from 11:00 to 12:00, and then the unit is switched off.

5.11.2 Scheduler section in Time Domain

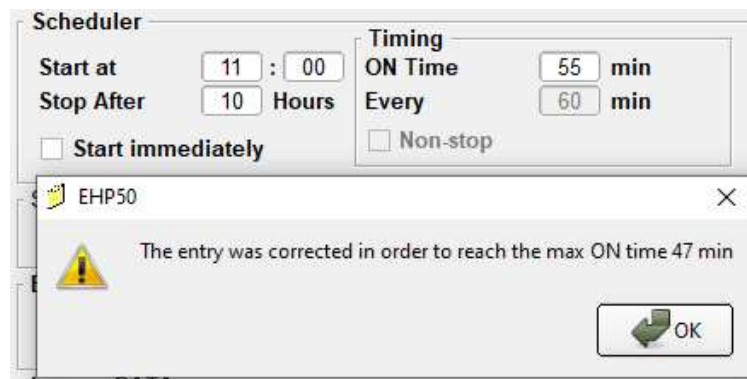
In Time Domain the Scheduler programming consists of setting a scheduled time to start storing data on the EHP-50G, defining how long performs the analysis and repetition interval.

The EHP-50G begins to record data immediately after being switched on (Start immediately enabled) or at the scheduled time set on Start at in the 24-hour format; if "Start at" is set earlier than the current time clock, the EHP-50G will perform the analysis the next day at the same time.

The analyzer remains on for the hours set on **Stop After**.

Each hour the analyzer stores the data for the time indicated on **ON Time** and it is placed in Stand-By for the time remaining to get 60 minutes (**Every**). Once **Stop After** is set, the software will assign to **ON TIME** a default value if needed; It can be changed at any time and the minimum value is 6 minutes.

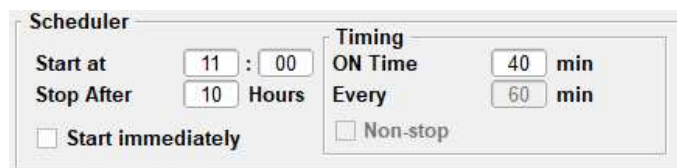
If the value entered by the user is not allowed, a warning message will appear and the nearest correct value will be set by the software.



In case a **Stop After** value is equal or lower than 8 hours, the **Non-stop** box is enabled. If activated , the software will assign to **ON TIME** a 60 minutes value and the field analyzer store data continuously.

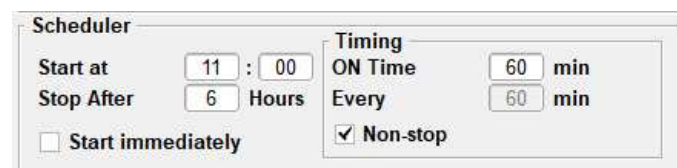
Example 1:

In the example below, the EHP-50G is switched on from 11:00 a.m. to 9:00 p.m., after which the device turns off. Each hour the analyzer saves data for 40 minutes and then it is placed on stand-by for the twenty minutes.



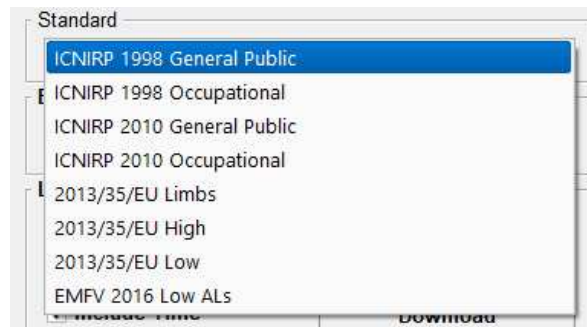
Example 2:

In the example below, the EHP-50G is switched on from 11:00 a.m. to 5:00 p.m., after which the device turns off. The analyzer saves data for 6 hours continuously.



5.12 Standard section

After selecting Time Domain method, a **Standard** section is available. Select one of the **standard ICNIRP or EU/EMFV limits**, already included by the software installation.

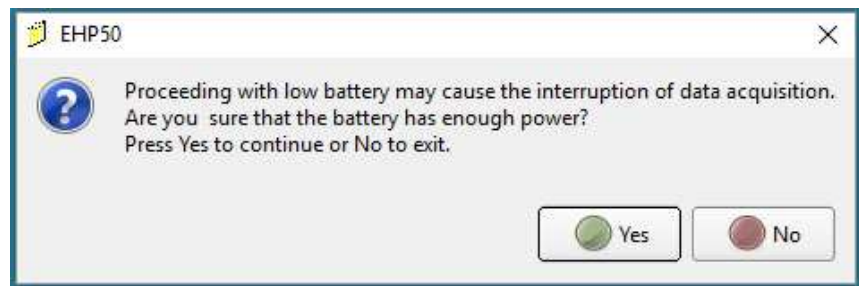


5.13 Set Logger button

All settings are ready to be stored in the EHP-50G. Click the **Set Logger** button.



The following message will appear.



Make sure the EHP-50G has enough battery level to perform the analysis and confirm with **Yes**. Otherwise click **No** and make a full charging cycle before using the Analyzer for longest battery operation time.

5.14 Installation on site and EHP-50G led status

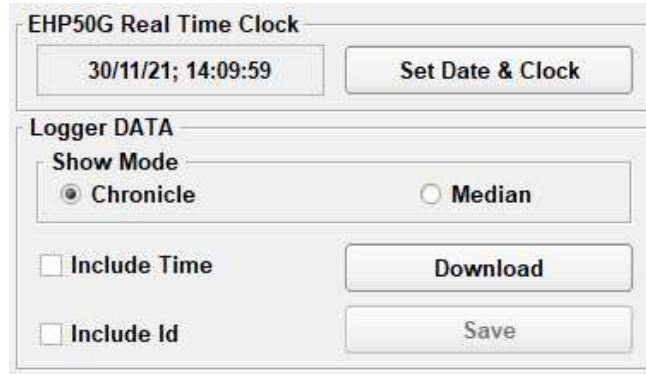
Once all settings are stored in the analyzer, proceed as follows:

- Disconnect the optical fiber
- Switch the EHP-50G off
- Plug in the optical bridge connector
- Install the unit on the site to be monitored
- Switch the EHP-50G on

The EHP-50G led flashing red and green when switched on (start immediately enabled ✓) or at the scheduled time set; it will remain fix orange for a second when the data is acquired at the rate set.

5.15 Download data

Once the stand-alone acquisition is performed, connect the EHP-50G to the PC and push the button **Download** to store all its data.



EHP50G Real Time Clock

30/11/21; 14:09:59 Set Date & Clock

Logger DATA

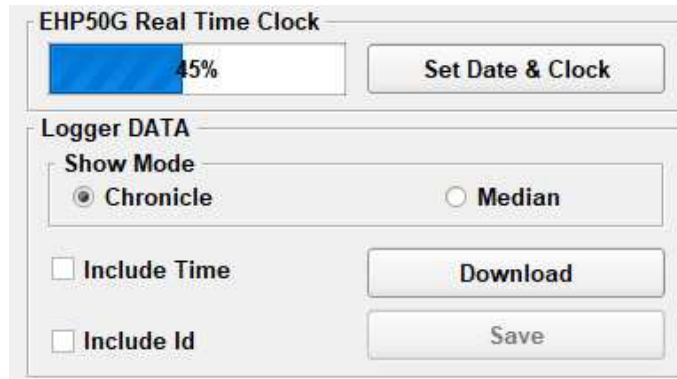
Show Mode

Chronicle Median


Include Time Download

Include Id Save

In Frequency Domain or Time Domain a blue bar is displayed indicating the percentage of the download.



EHP50G Real Time Clock

 45% Set Date & Clock

Logger DATA

Show Mode

Chronicle Median

Include Time Download

Include Id Save

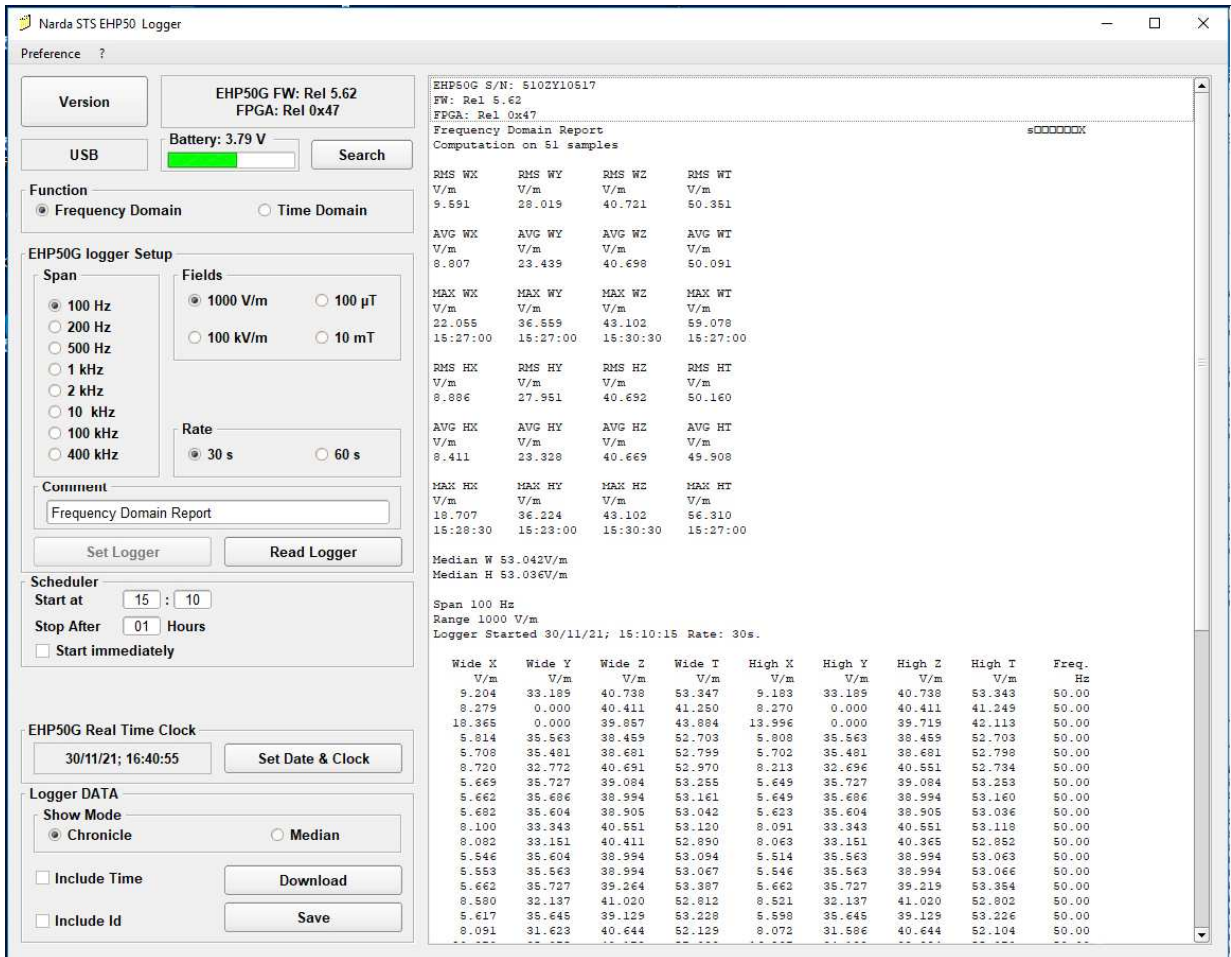
5.16 EHP-50G Stand Alone data display

Once the download is complete, on the right side the software will show:

- EHP-50G Serial Number
- EHP-50G Firmware release
- EHP-50G FPGA release
- Comment
- Analysis method
- Standard limit
- Number of samples stored
- RMS, Average, MAX and Median values in Highest and Wide
- Span
- Range/Fields
- Data & Clock Logger start and Rate
- Values downloaded shown in a table form

In order to the chosen analysis method, some informations are not reported.

5.16.1 Frequency Domain Frequency Domain data main window: data



Version
EHP50G FW: Rel 5.62
FPGA: Rel 0x47

USB
Battery: 3.79 V

Function
 Frequency Domain Time Domain

EHP50G logger Setup

Span
 100 Hz
 200 Hz
 500 Hz
 1 kHz
 2 kHz
 10 kHz
 100 kHz
 400 kHz

Fields
 1000 V/m 100 µT
 100 kV/m 10 mT

Rate
 30 s 60 s

Scheduler
Start at 15 : 10
Stop After 01 Hours
 Start immediately

EHP50G Real Time Clock
30/11/21; 16:40:55

Logger DATA
 Chronicle Median
 Include Time
 Include Id

EHP50G S/N: 5102Y10517
FW: Rel 5.62
FPGA: Rel 0x47
Frequency Domain Report
Computation on 51 samples

RMS WX	RMS WY	RMS WZ	RMS WT
V/m	V/m	V/m	V/m
9.591	28.019	40.721	50.351
AVG WX	AVG WY	AVG WZ	AVG WT
V/m	V/m	V/m	V/m
8.807	23.438	40.698	50.091
MAX WX	MAX WY	MAX WZ	MAX WT
V/m	V/m	V/m	V/m
22.055	36.559	43.102	59.078
15:27:00	15:27:00	15:30:30	15:27:00
RMS HX	RMS HY	RMS HZ	RMS HT
V/m	V/m	V/m	V/m
8.886	27.951	40.692	50.160
AVG HX	AVG HY	AVG HZ	AVG HT
V/m	V/m	V/m	V/m
8.411	23.328	40.669	49.908
MAX HX	MAX HY	MAX HZ	MAX HT
V/m	V/m	V/m	V/m
18.707	36.224	43.102	56.310
15:28:30	15:28:00	15:30:30	15:27:00

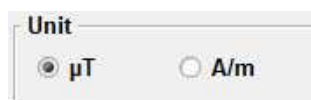
Median W 53.042V/m
Median H 53.036V/m

Span 100 Hz
Range 1000 V/m
Logger Started 30/11/21; 15:10:15 Rate: 30s.

Wide X	Wide Y	Wide Z	Wide T	High X	High Y	High Z	High T	Freq.
V/m	V/m	V/m	V/m	V/m	V/m	V/m	V/m	Hz
5.204	33.189	40.738	53.347	9.183	33.189	40.738	53.343	50.00
8.279	0.000	40.411	41.250	8.270	0.000	40.411	41.249	50.00
18.365	0.000	39.857	43.884	13.996	0.000	39.719	42.113	50.00
5.814	35.563	38.459	52.703	5.808	35.563	38.459	52.703	50.00
5.708	35.481	38.681	52.799	5.702	35.481	38.681	52.798	50.00
8.720	32.772	40.691	52.970	8.213	32.696	40.551	52.794	50.00
5.669	35.727	39.094	53.255	5.649	35.727	39.094	53.253	50.00
5.662	35.686	38.994	53.161	5.649	35.686	38.994	53.160	50.00
5.692	35.604	38.905	53.042	5.623	35.604	38.905	53.036	50.00
8.100	33.343	40.551	53.120	8.091	33.343	40.551	53.118	50.00
8.082	33.151	40.411	52.890	8.063	33.151	40.365	52.852	50.00
5.546	35.604	38.994	53.094	5.514	35.563	38.994	53.063	50.00
5.553	35.563	38.994	53.067	5.546	35.563	38.994	53.066	50.00
5.662	35.727	39.264	53.397	5.662	35.727	39.219	53.354	50.00
8.580	32.137	41.020	52.812	8.521	32.137	41.020	52.802	50.00
5.617	35.645	39.129	53.228	5.598	35.645	39.129	53.226	50.00
8.091	31.623	40.644	52.129	8.072	31.586	40.644	52.104	50.00

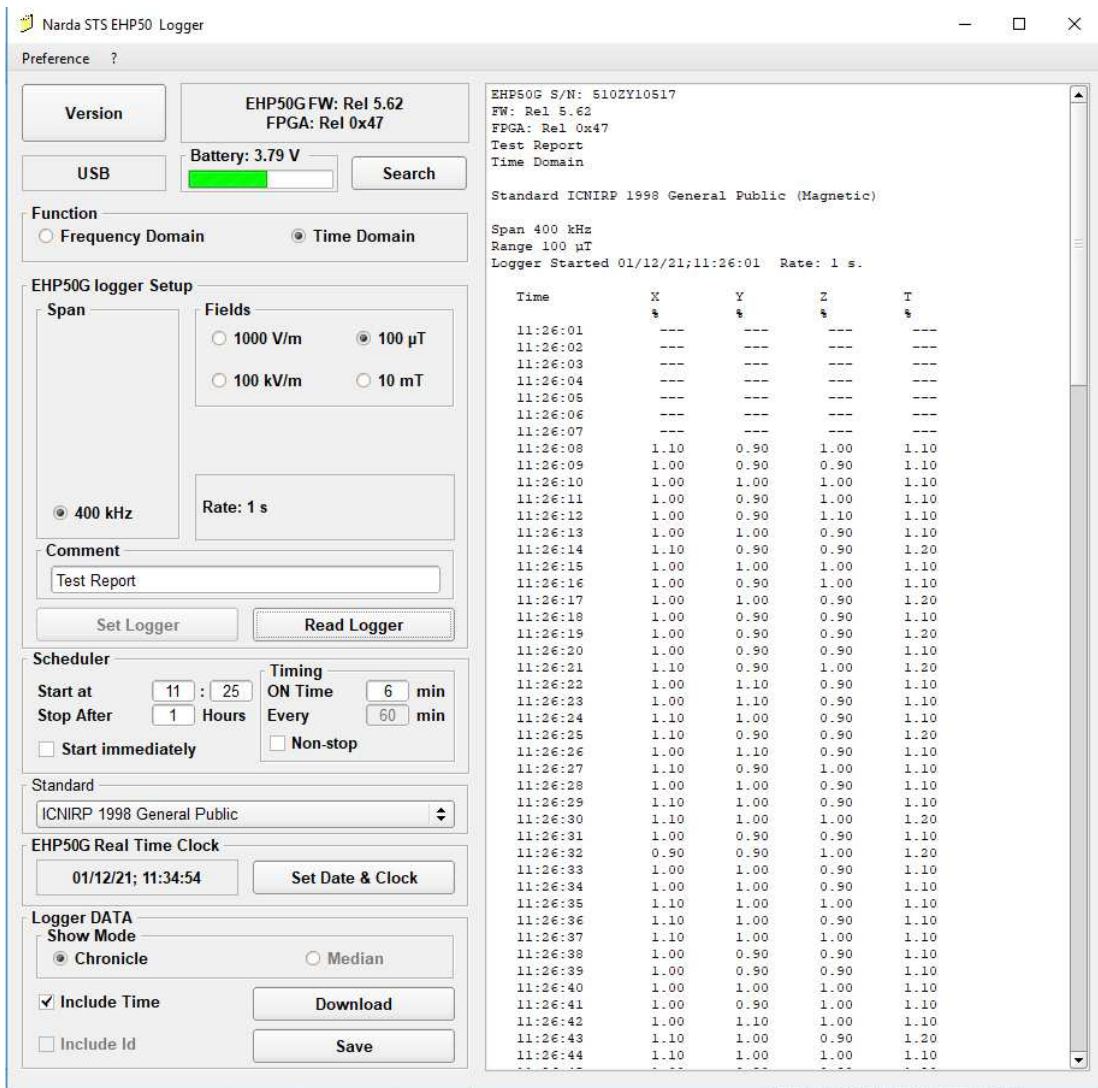
5.16.1.1 Unit section

After downloading magnetic field data in Frequency Domain, a **Unit** section is available to convert the data to µT or A/m unit.



Unit
 µT A/m

5.16.2 Time Domain data Time Domain data main window:



At the start of each acquisition session (see **ON Time** and **Every** setting) the analyzer performs an auto-check for some second, the measurements are not acquired and an “---” is displayed in the report.

Time	X	Y	Z	T
	µT	µT	µT	µT
11:26:01	---	---	---	---
11:26:02	---	---	---	---
11:26:03	---	---	---	---
11:26:04	---	---	---	---
11:26:05	---	---	---	---
11:26:06	---	---	---	---
11:26:07	---	---	---	---
11:26:08	1.10	0.90	1.00	1.10
11:26:09	1.00	0.90	0.90	1.10

A dash line will appear when an EHP-50G stand-by condition occurs among the acquisition session.

11:31:58	1.00	0.90	0.90	1.10
11:31:59	1.10	1.00	0.90	1.20
11:32:00	1.00	0.90	1.10	1.20

12:26:01	---	---	---	---
12:26:02	---	---	---	---
12:26:03	---	---	---	---

5.17 Logger DATA Section

The **Logger DATA** section allows showing the data in chronological order or WIDE T increasing value; the acquisition time and an identify number can be added on each row.

Logger DATA

Show Mode

Chronicle Median

Include Time Download

Include Id Save



“Median” and “Include id” functions are disabled in Time Domain .

Include Time

Adds the acquisition time for each measurement.

Time	Wide X V/m	Wide Y V/m	Wide Z V/m	Wide T V/m	High X V/m	High Y V/m	High Z V/m	High T V/m	Freq. Hz
15:10:30	9.204	33.189	40.738	53.347	9.183	33.189	40.738	53.343	50.00
15:11:00	8.279	0.000	40.411	41.250	8.270	0.000	40.411	43.249	50.00
15:11:30	18.365	0.000	39.857	43.884	13.996	0.000	39.719	42.113	50.00
15:12:00	5.814	35.563	38.459	52.703	5.808	35.563	38.459	52.703	50.00
15:12:30	5.708	35.481	38.681	52.799	5.702	35.481	38.681	52.798	50.00
15:13:00	8.720	32.772	40.691	52.970	8.213	32.696	40.551	52.734	50.00
15:13:30	5.669	35.727	39.084	53.255	5.649	35.727	39.084	53.253	50.00
15:14:00	5.662	35.686	38.994	53.161	5.649	35.686	38.994	53.160	50.00

Include Id

Includes a number to identify each row.

Id	Wide X V/m	Wide Y V/m	Wide Z V/m	Wide T V/m	High X V/m	High Y V/m	High Z V/m	High T V/m	Freq. Hz
1	9.204	33.189	40.738	53.347	9.183	33.189	40.738	53.343	50.00
2	8.279	0.000	40.411	41.250	8.270	0.000	40.411	43.249	50.00
3	18.365	0.000	39.857	43.884	13.996	0.000	39.719	42.113	50.00
4	5.814	35.563	38.459	52.703	5.808	35.563	38.459	52.703	50.00
5	5.708	35.481	38.681	52.799	5.702	35.481	38.681	52.798	50.00
6	8.720	32.772	40.691	52.970	8.213	32.696	40.551	52.734	50.00
7	5.669	35.727	39.084	53.255	5.649	35.727	39.084	53.253	50.00
8	5.662	35.686	38.994	53.161	5.649	35.686	38.994	53.160	50.00

Show Mode
 Chronicle Median

Median: The data are ordered from the lowest to the highest **WIDE T** value

Time	Wide X V/m	Wide Y V/m	Wide Z V/m	Wide T V/m	High X V/m	High Y V/m	High Z V/m	High T V/m	Freq. Hz
15:11:00	8.279	0.000	40.411	41.250	8.270	0.000	40.411	43.249	50.00
15:30:00	9.908	1.639	40.926	42.140	9.908	1.635	40.926	42.140	50.00
15:29:00	9.954	1.642	40.973	42.197	9.943	1.637	40.973	42.194	50.00
15:29:30	9.977	1.639	41.068	42.294	9.977	1.633	41.020	42.248	50.00
15:28:00	10.605	2.058	40.926	42.328	10.593	2.054	40.926	42.324	50.00
15:35:00	9.649	2.449	42.364	43.518	9.649	2.449	42.364	43.518	50.00
15:32:30	9.057	2.985	42.511	43.567	9.057	2.982	42.511	43.567	50.00
15:34:30	9.661	2.460	42.413	43.569	9.661	2.458	42.413	43.569	50.00

Show Mode
 Chronicle Median

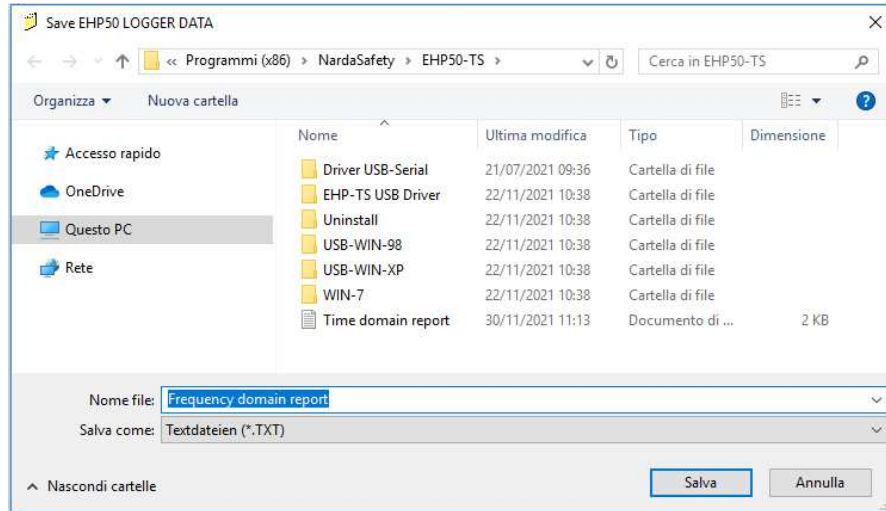
Chronicle: Shows the data in chronological order.

Time	Wide X V/m	Wide Y V/m	Wide Z V/m	Wide T V/m	High X V/m	High Y V/m	High Z V/m	High T V/m	Freq. Hz
15:10:30	9.204	33.189	40.738	53.347	9.183	33.189	40.738	53.343	50.00
15:11:00	8.279	0.000	40.411	41.250	8.270	0.000	40.411	43.249	50.00
15:11:30	18.365	0.000	39.857	43.884	13.996	0.000	39.719	42.113	50.00
15:12:00	5.814	35.563	38.459	52.703	5.808	35.563	38.459	52.703	50.00
15:12:30	5.708	35.481	38.681	52.799	5.702	35.481	38.681	52.798	50.00
15:13:00	8.720	32.772	40.691	52.970	8.213	32.696	40.551	52.734	50.00
15:13:30	5.669	35.727	39.084	53.255	5.649	35.727	39.084	53.253	50.00
15:14:00	5.662	35.686	38.994	53.161	5.649	35.686	38.994	53.160	50.00

5.18 Save button



Save the data reported in the main window as text file (.TXT).



The recorded data can be viewed either as a graph or as a table. By using Word or Excel application, click the Open file command and select "Type of file": "all files"; then find the file to open starting from the directory and follow the necessary path until the file is found.

6 – Update Firmware

6.1 Update firmware

The EHP-50G internal firmware can be updated easily by the user.

The “**Dongle Utility**” embedded in the EHP-50 setup is used for the **Options** activation procedure

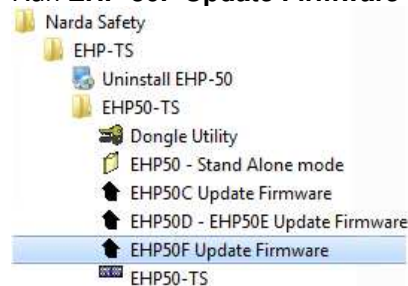
This section provides all the information required for firmware updating and options activation.

The Update Firmware Program and Activation utility are available after EHP50-TS package installation.

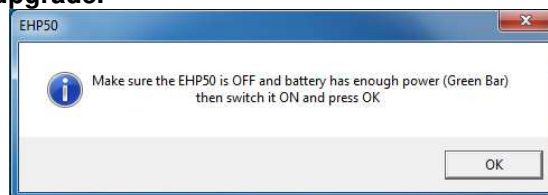
6.2 To run the update software

Turn off the EHP-50G and connect it to a free USB or RS232 port of the PC.

Run **EHP-50F Update Firmware** to start the update program.



The User should check that the battery level is at least 3.9 V before starting the upgrade.



6.3 To transfer data

Main window displayed after the updating program **EHP-50F Update Firmware** has been run:



Fig.6-1 EHP-50G Upgrading Utility Main Window

Select USB or RS232 communication port.

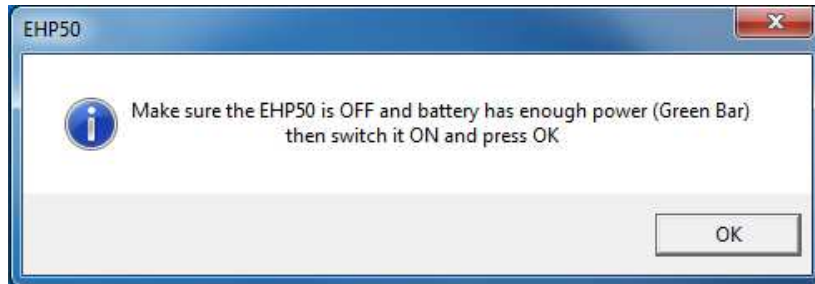
Before selecting RS232 port, choose the COM port used.



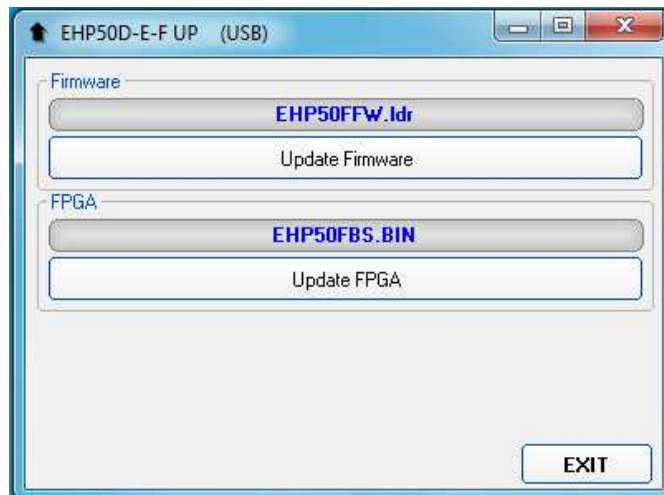
In case the software does not detect any EHP-50G in the USB port, the following message will be displayed.

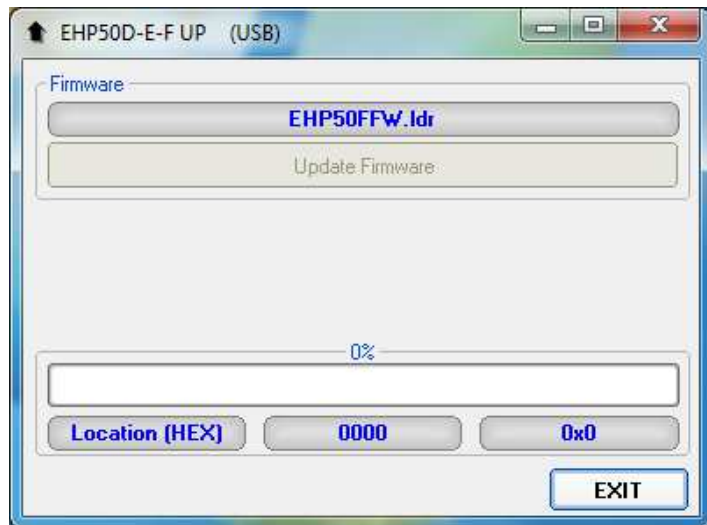


As soon as the connection is established, a message informs to turn the EHP-50G **OFF** and turn it **ON** again; press **OK** to confirm.



Two firmware components can be updated by this application: Firmware, which is the main analyzer internal program, and FPGA, to update parameters of the analyzer Field Programmable Gate Array. Both files, required for updating, are automatically stored within the EHP-TS directory during EHP50-TS software installation. To start the process simply select **Update Firmware** or **Update FPGA** button and wait (few minutes) until the automatic transfer is completed.





At the end, a message informs if the update has been successfully performed.

Turn the EHP-50G **OFF** (it could seem to be already OFF but it is not) and turn it **ON** again.

The EHP-50G is now updated with the new version of the internal firmware or FPGA.

It is now possible to disconnect the cable connected to the PC, with the EHP-50G meter either switched on or off.

Subsequently, when the meter is switched on again, the new version will be displayed in the NBM-550, EHP50-TS or EHP-50 Stand Alone Mode application software.



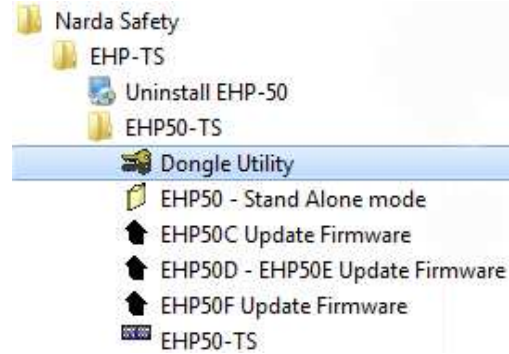
To obtain firmware or FPGA or programs updates for EHP-50G, please contact your NARDA distributor or download it directly from the NARDA Web site <http://www.narda-sts.it>

6.4 Dongle Utility

The **Dongle Utility** allows to enable the function ordered such Options using the **40 Digit Activation Code** received from NARDA Italy.

Turn on the EHP-50G and connect it to a free USB or RS232 port of the PC.

Browse for All Programs from the Start Menu and reach the “**Dongle Utility**” executable link:



Main window displayed after the program **Dongle Utility** has been run:



Fig.6-2 EHP-50G Options activation Utility Main Window

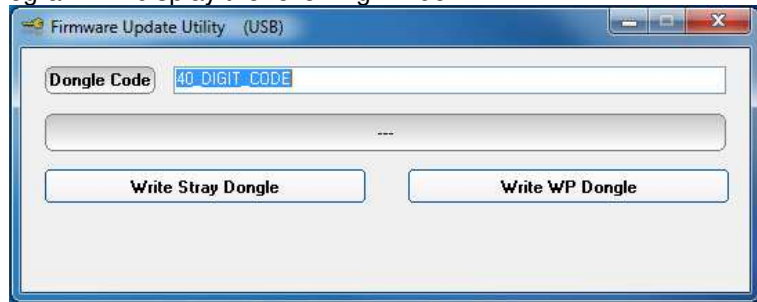
Select USB or RS232 communication port.

Before selecting RS232 port, choose the COM port used.

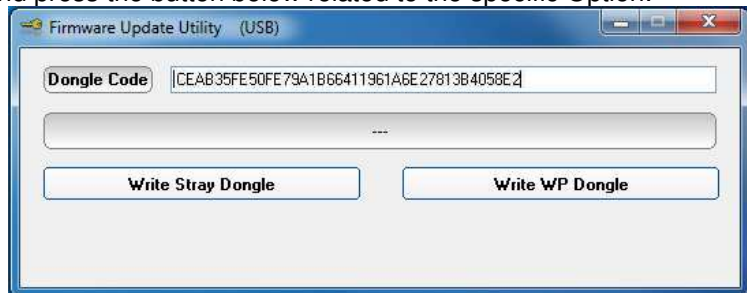
In case the software does not detect any EHP-50G in the USB port, the following message will be displayed.



The program will display the following window:



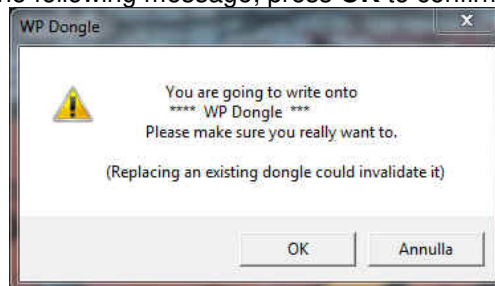
Copy and paste the **40 Digit Activation Code** to the “Dongle Code” input field and press the button below related to the specific Option:



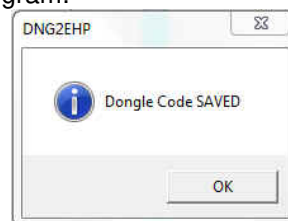
In case of failure, an error message is showed instead.



It will be shown the following message; press **OK** to confirm.



The software will inform that the Dongle Code has been successfully stored; Press **OK** to close the program.



Always cycle OFF and ON the EHP-50G to properly initialize the function.

This page has been intentionally left blank

7 – Uninstalling Software

7.1 Uninstalling EHP-TS Software

It is possible to remove the EHP50-TS software from the PC according to the following procedure:

Run the Uninstall EHP50-TS utility.



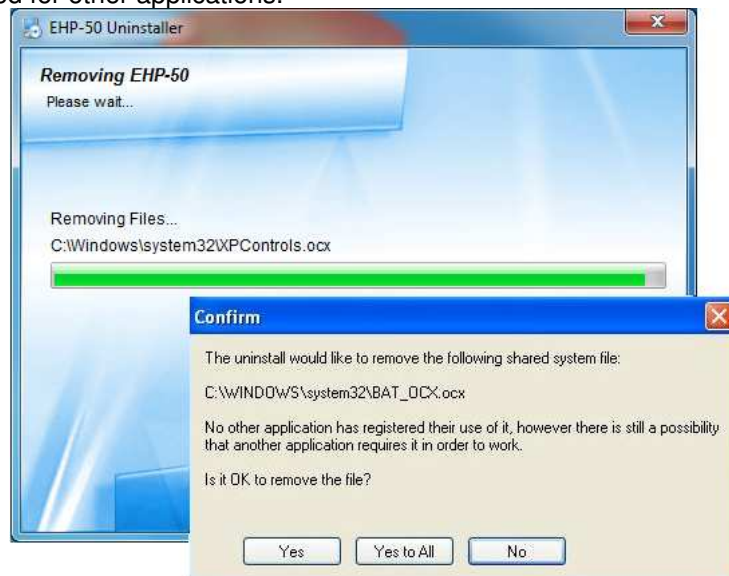
Follow the uninstaller instructions.



Fig. 7-1 Uninstalling EHP-TS

Before removing any shared system file, the uninstaller will ask for a confirmation.

Answer “NO” in case you are not sure whether the showed system file is required for other applications.





EHP50-TS software is now removed from the system, click “Finish” to close uninstaller utility

8 – Uninstalling USB-OC

8.1 Uninstalling driver for USB-OC

It is possible to remove the USB-OC driver from the PC according to the following procedure:

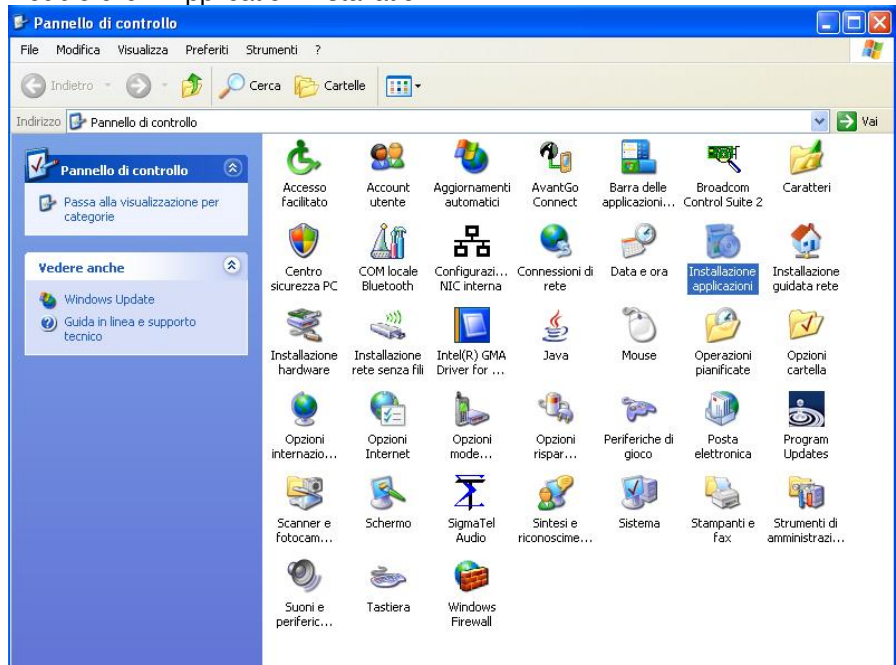


The following procedure shows how to remove the driver in Windows XP environment. It may be different depending on the operating system in use.

Open the Windows Control Panel.



Double click "Application Installation".



From the application list select “FTDI FTD2XX USB Drivers” and click “Change/Remove”.

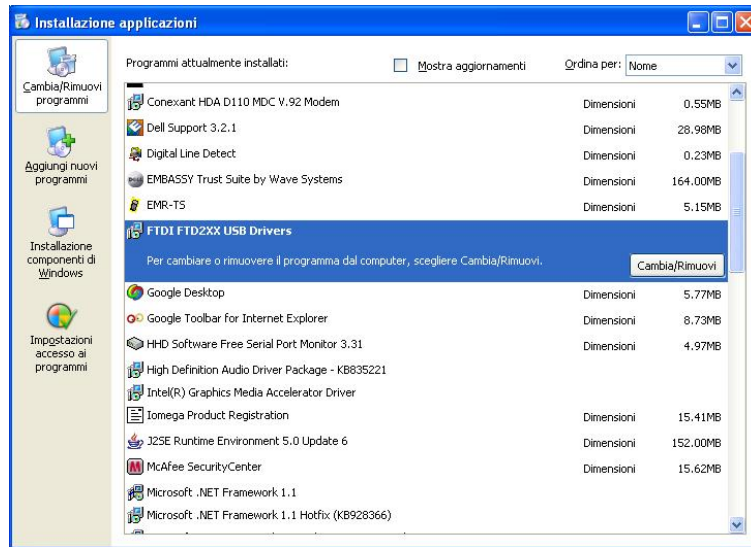
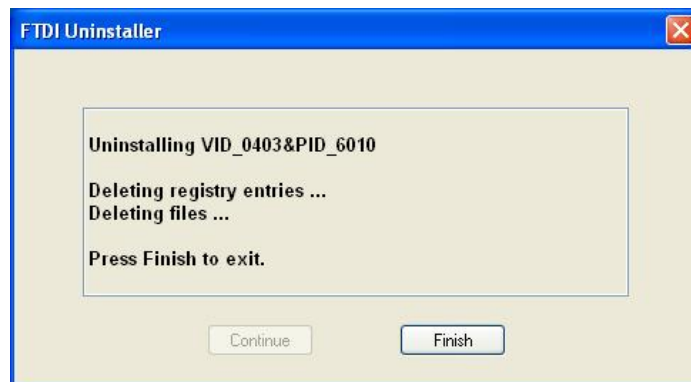


Fig. 8-1 Uninstalling USB-OC

Unplug the USB-OC converter, if connected, and click “Continue”.



Click “finish” to exit the uninstaller, USB driver is now removed from your system.

9 - Accessories

9.1 Introduction

This section provides information required for installing and using accessories for EHP-50G Analyzer.

Information is included regarding initial inspection, power requirements, interconnections, work environment, assembly, cleaning, storage and shipment.

The following general information is applicable to all accessories.

9.1.1 Preliminary inspection

Inspect the packaging for any damage.

NOTICE

If the packaging or anti-shock material have been damaged, check that the contents are complete and that the product has not suffered electric or mechanical damage.

Check that all the Accessories are there against the checklist found with the apparatus.

Inform the carrier and NARDA of any damage that has occurred.

9.1.2 Work environment

Unless otherwise specified, the work environment of the Accessories, must come within the following conditions:

- Temperature From -10°C to +50° C (0°C to 40°C for Battery Charger)
- Humidity < 90% relative

The Accessories must be stored in a clean and dry environment, free from dust, acids and humidity.

The storage environment must come within the range of the following conditions:

- Temperature From -30°C to + 70°C (-20°C to 60°C for Battery Charger)
- Humidity < 95% relative

9.1.3 Return for repair

When the Accessories need to be returned to NARDA for repair, please complete the questionnaire appended to this User's Manual, filling in all the data that will be useful for the service you have requested.

For reducing the period of time required for the repairs, it is necessary to be as specific as possible in describing the problem. If the problem only occurs in certain circumstances, please describe in detail how it happens.

If possible it is better to reuse the original packaging; making sure that the apparatus is wrapped in thick paper or plastic.

Otherwise, use strong packaging by using a sufficient quantity of shock absorbent material around all sides of the product to ensure that it is compact and does not move around inside the package.

In particular, take every precaution to protect the front panels.

Finish the package by sealing it up tightly.

Apply a FRAGILE label to the package to encourage greater care in its handling.

9.1.4 Cleaning

Use a dry, clean and non-abrasive cloth for cleaning the instruments.

NOTICE

Do not use solvents, acids, turpentine, acetone or other similar products for cleaning the devices in order to avoid damaging them.

9.1.5 Power supply and battery chargers

EHP-50G accessories are powered by either internal rechargeable batteries or directly from other devices to which they are connected.

The AC/DC battery charger can be used with a power frequency at either 50 Hz or 60 Hz with a supply voltage between 100 and 240 AC Volt. International AC plug adapters are provided according to the various national standards.

AC plug adapter can be easily removed from the battery charger to be replaced by a different one.

To have the longest autonomy, a full recharging cycle should be carried out before using the Accessories.



ALWAYS connect the battery charger to the mains BEFORE connecting to the charge input of the accessories.

The battery charger has an internal protective circuit that will break the output if any load is detected while connecting to the mains.

Battery charger:

output: DC, 10 - 15 V, ~ 500 mA



Connector:



In order to preserve battery efficiency a complete recharge cycle is required before storing them for periods longer than 4 months. Therefore, it is warmly suggested recharging the batteries at least every 4 months even though the device has not been used.

9.2

USB-OC Optical USB Converter

9.2.1 Introduction



USB-OC is standard accessory of the EHP-50G Analyzer. It converts the signals of some of the system's accessories, which are only connected via fiber optic, into USB-compatible signals. It, therefore, makes it possible to link the following items up to the USB port of any Personal Computer to operate them in conjunction with specific application software and for firmware updating:

- EHP-50G Electric and Magnetic Field Analyzers, 1Hz - 400kHz
- EHP-200A Electric and Magnetic Field Analyzers, 9kHz - 30MHz
- EHP-200AC Electric and Magnetic Field Analyzers, 3 kHz – 30 MHz
- NBM550 Broadband meter

Either USB-OC or 8053-OC is indispensable for updating the internal firmware of the above-mentioned items via a Personal Computer and the relative update software is available free-of-charge on NARDA's Web site at <http://www.narda-sts.it>

9.2.2 Installation

Insert USB-OC in the connector of a free USB port of the PC, connect the fiber optic coming from the probe or other Accessories treating the locating key with care. Considering the very low consumption of the device, the power required by USB-OC is taken directly from the USB port of the PC. This means no maintenance is needed.

Table 9-1 Technical specifications of the USB-OC Optical USB Converter	
Max. length of the fiber optic	40 m (10m with EHP-200A/AC)
USB Connector	Type A Male



The link between USB-OC and a HUB USB device or USB cable extension could not work properly. Connect the USB-OC to the PC directly.

Front view



Key:

Fiber optic connector

Rear view



Key:

USB Type A Male

Fig. 9-1 USB-OC adapters

Power supply

USB-OC is powered directly from the USB port of the PC.

9.3

8053-OC Optical RS232 Converter

9.3.1 Introduction



8053-OC is an optional accessory of the EHP-50G Analyzer. It converts the signals of some of the system's accessories, which are only connected via fiber optic, into RS-232-compatible signals. It, therefore, makes it possible to link the following items up to the serial port of any Personal Computer to operate them in conjunction with specific application software and for firmware updating:

- EHP-50G Electric and Magnetic Field Analyzers, 1Hz - 400kHz
- EHP-200A Electric and Magnetic Field Analyzers, 9kHz - 30MHz
- EHP-200AC Electric and Magnetic Field Analyzers, 3 kHz – 30 MHz

Either 8053-OC or USB-OC is indispensable for updating the internal firmware of the above-mentioned items via a Personal Computer and the relative update software is available free-of-charge on NARDA's Web site at <http://www.narda-sts.it>

9.3.2 Installation

Insert 8053-OC in the connector of a free serial port of the PC, connect the fiber optic coming from the probe or other Accessories treating the locating key with care.

Considering the very low consumption of the device, the power required by 8053-OC is taken directly from the serial port of the PC. This means no maintenance is needed.

Table 9-2 Technical specifications of the 8053-OC Serial Optical Converter

Max. length of the fiber optic	80 m
RS 232 Connector	9 pin DB9



The energy available on the DB9 connector of some PC model could be not sufficient to guarantee a link with 8053-OC. In this case, is necessary use 8053-OC-PS between the converter and PC.

Front panel

Key:

- 1 – Fiber optic connector



Rear panel

Key:

- 1 - RS232 female DB9 connector

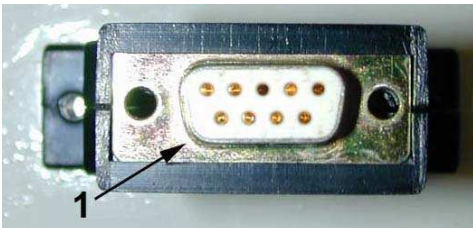


Fig. 9-2 8053-OC Panels

9.4

8053-OC-PS Power Supply

9.4.1 Introduction



The energy available on the DB9 connector of some PC model could be not sufficient to guarantee a link with 8053-OC. In this case, it is necessary to use 8053-OC-PS between the converter and PC.

8053-OC-PS is an optional accessory of the EHP-50G Analyzer.

8053-OC-PS is indispensable for some PC model which do not have sufficient energy, at the Serial Port, to guarantee a link with 8053-OC.

9.4.2 Installation

Connect 8053-OC-PS to a free serial port of the PC or serial cable and connect the 8053-OC to 8053-OC-PS. 8053-OC-PS is powered by means of the provided 230Vac - 9Vdc Wall Adapter. Connect the fiber optic coming from the probe or other Accessories to 8053-OC.

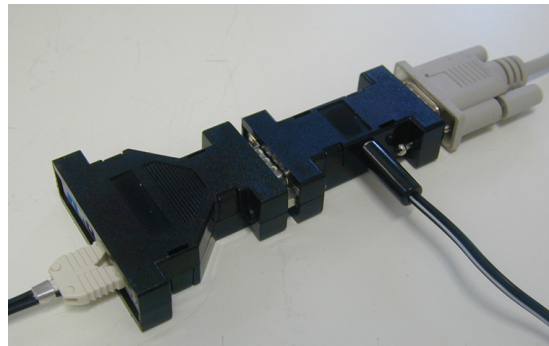


Table 9-3 Technical specifications of the 8053-OC-PS Power Supply

RS 232 Connectors

9 pin DB9



Front panel

RS232 male DB9 connector



Rear panel

RS232 female DB9 connector



Side panel

Supply male connector

Fig. 9-3 8053-OC-PS Connectors

Power supply

8053-OC-PS is powered through 230Vac - 9Vdc Wall Adapter.

8053 Display Unit for EHP-50G



Fig. 9-4 8053 Display

EHP-50G can be easily operated using the Portable Field Meter 8053 Display as a controller and display unit. In order not to influence the field to be measured, communication between the EHP-50G Analyzer and the 8053 Display Unit is through a rugged optical fiber cable. The 8053 Display supports the following settings and measurement modes:

- Electric or magnetic field selection (1 kV/m; 100 kV/m; 100 μ T; 10 mT)
- Span selection (100 Hz ... 400 kHz)
- Wideband or highest peak modes
- Spectrum Mode
- Monitor Mode (Actual; Max; Avg; Min)
- XYZ Mode (wideband or highest peak)
- Weighted Peak ranging from 1 Hz to 400 kHz

Additional features include:

- Normalized spectrum in % related to a standard (e.g. ICNIRP)
- Alarm with adjustable thresholds for electric and magnetic field
- Averaging (4-32 samples) and Maximum Hold
- Full resolution spectrum marker
- Timer Logging
- Post-averaging for logged data on PC (RMS, Mean, Median)



NOTE

For more information, please refer to the 8053B product information on the Narda website <http://www.narda-sts.it>



NOTE

The explanation concerning how work the Time Domain (Weighted Peak function) can be found in chapter 4 of this manual.

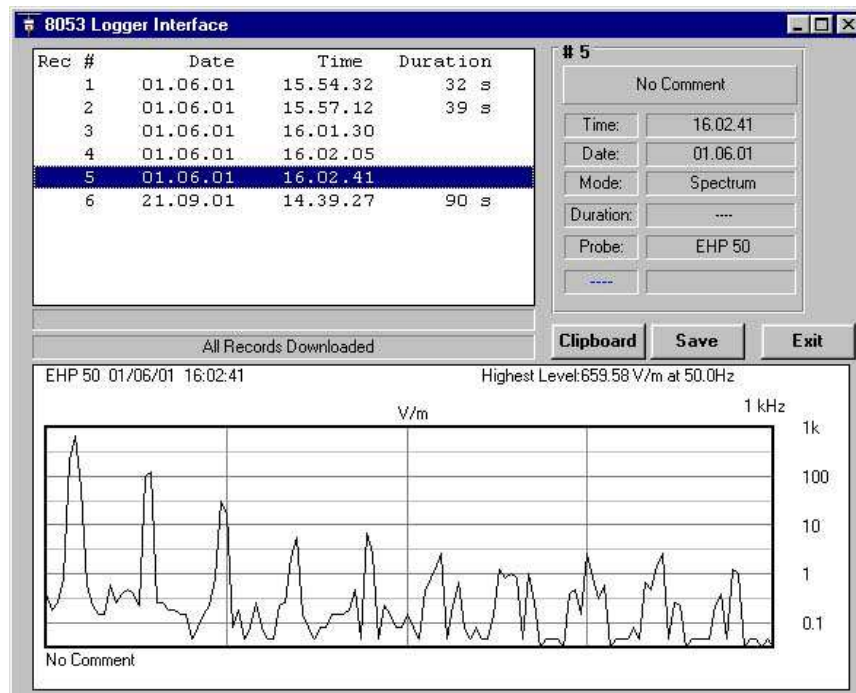


Fig. 9-5 8053 Logger Interface software supports evaluation and documentation of results saved on 8053 display

8053 Display screenshots of EHP-50G results:

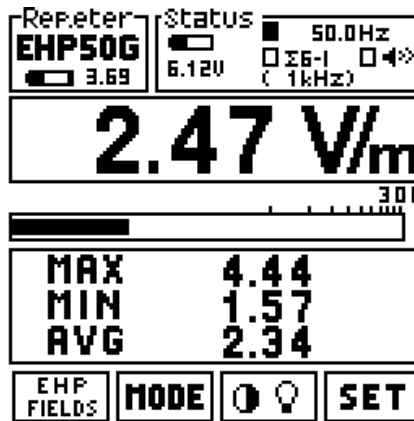


Fig. 9-6 Monitor Mode

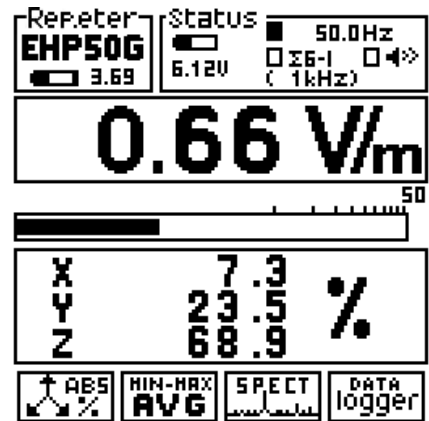


Fig. 9-7 XYZ Mode %

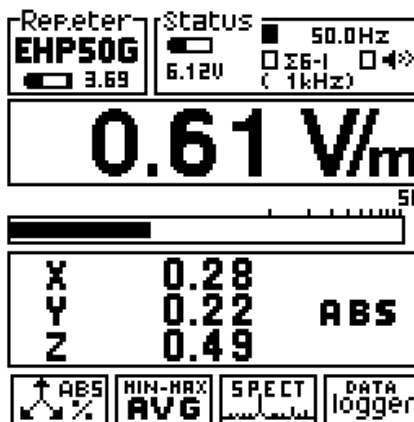


Fig. 9-8 Monitor Mode ABS

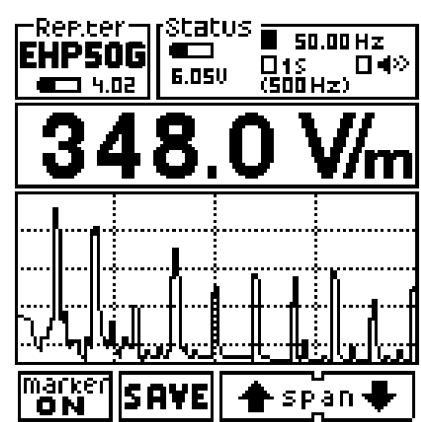


Fig. 9-9 Spectrum Mode

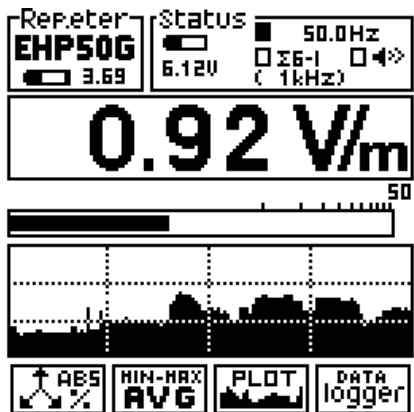


Fig. 9-10 Mode Plot

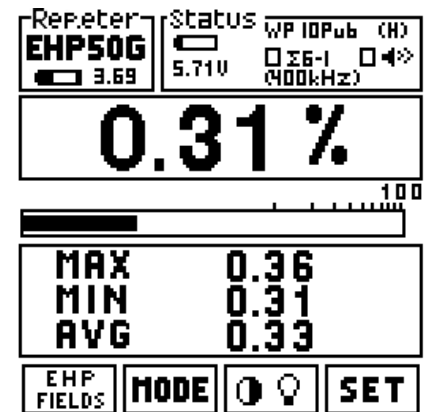


Fig. 9-11 Weighted Peak Mode



To support the “Weighted Peak” payment special function, the EHP-50G firmware release must be 5.65 or higher.
 To allow a correct support of the EHP-50G new features, the 8053 Display firmware must be 3.25 or higher.
 Please contact your local Narda distributor for details or download it directly from the NARDA Web site: <http://www.narda-sts.it>

9.5.1 Introduction

8053 Display is an optional accessory of the EHP-50G and EHP-200A/AC Analyzers.

8053 Display is a versatile and expandable test system suitable for measuring electric and magnetic fields relating to electrosmog.

The system consists of various electric and magnetic field probes and of a compact and portable meter equipped with a wide graphic LCD display, 4 simple function keys (which allow different actions and settings, in accordance with the selected menu), internal rechargeable batteries and RS232 and optic fiber interfaces. The system also has a wide range of Accessories, which have been designed for all the needs of the tests.

9.5.2 Standard accessories

The standard accessories included with 8053 Display are:

- Soft Carrying Case;
- Serial Cable (1.5m long);
- AC/DC Converter;
- Downloading & firmware update Software Media;
- 8053SW-02 Data acquisition software
- User's Manual;
- Calibration Certificate;
- Return for Repair Form.

9.5.3 Optional accessories

The following accessories may be ordered separately:

- FO-8053/10 Fiber Optic Cable (10m);
- FO-8053/20 Fiber Optic Cable (20m);
- FO-8053/40 Fiber Optic Cable (40m);
- FO-8053/80 Fiber Optic Cable (80m);
- FO-10USB Fiber Optic Cable (10m);
- FO-20USB Fiber Optic Cable (20m);
- FO-40USB Fiber Optic Cable (40m);
- TR-02A Tripod with Swivel;
- TT-01 Fiber Glass Telescopic Support;
- 8053-CC Rigid Carrying Case;
- 8053-CA Car Adapter;
- 8053-BC Additional Battery Charger;
- 8053-OC Optical Converter;
- USB-OC Optical Converter;
- 8053-GPS GPS Unit;
- 8053-RT Remote Trigger;
- EHP-50G Electric and Magnetic field Probe – Analyzer
- EHP-200A Electric and Magnetic field Probe – Analyzer
- EHP-200AC Electric and Magnetic field Probe – Analyzer

9.5.4 Field probes

Beside EHP-50G, many other probes are available for using with 8053 Display, as for an example the powerful EHP-200A and EHP-200AC.

	Electric Field	Magnetic Field Mode A	Magnetic Field Mode B
Frequency range	9 kHz ÷ 30 MHz	9 kHz ÷ 3 MHz	300 kHz ÷ 30 MHz
Measurement range	0.02 ÷ 1000 V/m	6 mA/m ÷ 300 A/m	0.6 mA/m ÷ 30 A/m

	Electric Field	Magnetic Field Mode A	Magnetic Field Mode B
Frequency range	3 kHz ÷ 30 MHz	3 kHz ÷ 300 kHz	30 kHz ÷ 30 MHz
Measurement range	0.02 ÷ 1000 V/m	20mA/m ÷ 1 kA/m	6 mA/m ÷ 300 A/m

9.5.5 Main specifications

Table 1-1 lists the specifications of 8053 Display. The specifications of all accessories are listed in the Chapter on Accessories.

The following conditions apply to all specifications:

- Temperature for use must be between -10°C and +40°C.

TABLE 9-6 Technical Specifications of 8053 Display

Frequency range	Depending on the probe
Dynamic range	>140 dB (depending on the probe)
Operating range	
Resolution	Depending on the probe (See Table 1-2)
Sensitivity	
Units	V/m, kV/m, μ W/cm ² , mW/cm ² , W/m ² , A/m, nT, μ T, mT;
LCD Display	
Field measured	X, Y, Z in absolute values, percent and total.
Time	Internal clock in real time
Probe	Display of the model and date of calibration
Graphic bar	The analog bar displays: - real time value with respect to full scale; - field versus time (in linear or logarithmic form) with automatic time scaling; - alarm threshold.
Measuring function	
Internal memory	Up to 32.700 measurements (up to 8.100 standard memory, up to 21.600 extended memory)
Alarm	Variable threshold from 0 to 100% of full scale. Internal sound and blinking symbol on the display when the level is greater than the alarm threshold
Functions	
Averaging mode	Arithmetic, quadratic (RMS), manual, rolling and spatial
Averaging time	Definable 30 sec, 1, 2, 3, 6, 10, 15, 30 min or manual
Data acquisition (Logger)	Sampling mode (1, 10-900 sec/sample), data change, over the limit, average on 6 min, manual, spectrum (EHP-50 series), Weighted Peak (EHP-50G only)
General specifications	
Output	LCD display 72x72mm 128x128 pixel, RS232 (with cable or fiber optic)
Input	Fiber optic connector
Internal battery	Rechargeable at NiMH (5 x 1.2 V)
Operational time	24 hours normal mode, 48 hours (in SAVE MODE function: display off)
Recharge time	< 4 hours (15 minutes charge for 1 hour of use)
External power supply	DC, 10 - 15 V, I = about 500 mA
Interfaces	RS232 (calibration and firmware update)
Software/Firmware	Upgrade available via Internet at the Web site: http://www.narda-sts.it
Autotest	Automatic during switch-on of all functions;
Calibration	Inside the built-in E ² PROM of the probe
Conformity	With Directives 89/336 and 73/23 and the amendments to them CEI 211-6 and 211-7
Operating temperature	From -10 to +40°C
Storage temperature	From -20 to +70°C
Size (WxHxD)	108 x 240 x 50 mm
Weight	1.07 kg
Tripod support	Threaded insert 1/4"

9.5.6 Front panel



Key:

- 1 - Display
- 2 - Alphanumeric keyboard
- 3 – Tripod thread insert
- 4 – Side panel (see §9.5.7)

Fig. 9-12 Front panel

9.5.7 Side panel



Key:

- 1. Connection EHP-50G or EHP200A/AC fiber optic link
- 2. Wired RS232 interface for PC connection
- 3. Battery charger connector (12V - 0.5A)

Fig. 9-13 Side panel

9.5.8 Battery charger

The battery charger supplied with the meter can work at either 50 Hz or 60 Hz with a supply voltage range between 100 and 240 Volt. It is supplied with different connectors to the supply mains in accordance with the various national standards.

9.5.9 To substitute the mains connector

To substitute the mains connector, simply remove the one installed on the battery charger and replace it with the one that is in compliance with its use.

9.5.10 To check the internal batteries

If the internal batteries are to have the greatest autonomy, we recommend that a full recharging cycle be carried out before using the meter.

To do this, go through the following procedure:

- Connect the battery charger to the power socket
- Link the output connector of the battery charger to the input **CHARGER** on the side panel of the meter
- 8053 Display will switch on automatically, after making a sound produced by the internal buzzer, the display will be activated and the meter will start its auto-check and begin the procedure for recognising the probes.
- The main window will therefore be activated and the status of the charge (**CHG**) of the battery will be displayed in the **STATUS** box

Indications of the battery in the STATUS box:

The status of the charge of the battery is displayed in the top left-hand corner of the **STATUS** box. The symbol of a small battery will be filled up proportion to the status of the battery charge.

The battery charger will be automatically stopped when one of the following occurs and a small connector will be displayed relating to a letter indicating the end of the recharging cycle.

Display of the following letters means:

- V** – The voltage of the batteries has reached 1.45 V/element (7.25 total), and therefore the recharging cycle is complete.
- H** – The recharging cycles has lasted for more than 4 hours.
- T** – The temperature of the batteries, compared to the temperature stored after ten minutes recharging, has increased more than 10 °C, or the temperature of the battery has reached 65 °C.

When the recharging cycle is finished, the 8053 Display is ready for use.



To avoid damage to the batteries, when the T symbol appears, the recharging cycle is stopped automatically.

To finish the recharging cycle wait for about ten minutes for the batteries to cool down then reconnect the battery charger.

Battery charger: DC, 10 - 15 V, ~ 500 mA



Connector:



ALWAYS connect the battery charger to the mains power BEFORE connecting the DC output to 8053 Display. The battery charger has an internal protective circuit that will not let it work if there is a load connected to the battery charger before the connection to the mains is activated.



In order to safeguard the features of the batteries, it is crucial to have a complete recharge before storing them for periods longer than 4 months. Therefore, it is warmly suggested recharging the batteries at least every 4 months even though the device has not been used.

9.6

TR-02A Tripod

9.6.1 Introduction



Optional accessory TR-02A tripod allows easy positioning of EHP-50G analyzer for accurate field measurement.

The standard 1/4" threaded insert, located at the bottom of EHP-50G housing allows mounting the analyzer on the tripod through the provided swivel support.

Design and materials of the TR-02A tripod have been specially selected to avoid field perturbations which might otherwise affect measurement results if unsuitable support were adopted.

The height of the tripod can be adjusted by means of its extendable legs equipped with special feet which improve stability by adapting to all surfaces. The height of its central support can also be adjusted.

A soft carrying case is provided with TR-02A tripod.

Table 9-7 Technical specifications of the TR-02A Tripod

• Legs	3 legs x 3 extendable sections
• Transport size:	76 x 12 x 12 cm
• Minimum height:	60 cm
• Maximum height:	180 cm
• Weight	2.8 kg
• Load capacity:	10 kg
• Tripod support	Threaded insert 1/4"

Details of TR-02A and its adjustments:

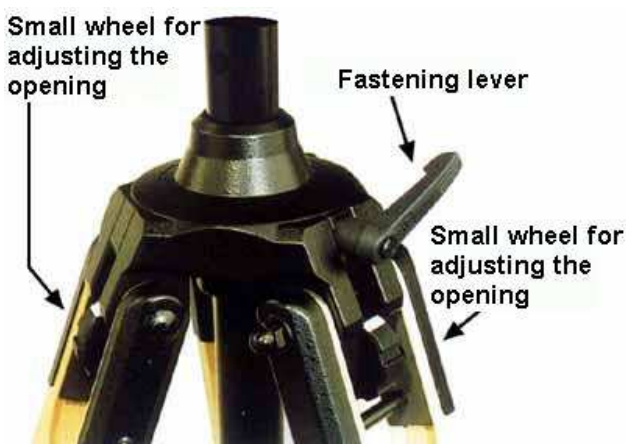


Fig. 9-14 TR-02A Tripod

Opening angle of each leg can be adjusted in three different positions by means of special adjusting wheels.

- fixed opening of 20°: White adjustment indicator is visible (as shown in Fig. 9-14);
- fixed opening of 45°: Red adjustment indicator is visible;
- variable opening: no indicator is visible.

The central support can be adjusted and blocked by means of a special fastening lever.

Details of swivel support:

- full height: 8 cm
- weight: 160 g
- load capacity: 10 kg
- Threaded insert 1/4"

The adjustable swivel makes mounting and fastening the instrument easy as well as changing the angle in any directions via the locking knob.



9.7

TT-01 Fiber Glass Telescopic Support

9.7.1 Introduction

TT-01 is an Optional Accessory of the EHP-50G Analyzer. It allows EHP-50G Analyzer to be easily supported during field measurements.

A standard 1/4" threaded insert allows easy mounting of EHP-50G on the telescopic support

The design and materials of the TT-01 have been specially selected to prevent it from disturbing the sensors and, therefore, the measurements taken.

Table 9-8 Technical specifications of the TT-01 Fiber Glass Telescopic Support

• Diameter	32 mm
• Minimum height:	120 cm
• Maximum height:	420 cm
• Weight	500 g

TT-01 Fiber Glass Telescopic Support with soft carrying case



The height of the TT-01 can be adjusted.

Fig. 9-15 TT-01 Fiber Glass Telescopic Support

Other Accessories

Other Accessories are available on request with the EHP50G, such as: car adapter, 12 V battery charger and Internal AC Plug Adapter.



This page has been intentionally left blank

Caro cliente

grazie per aver acquistato un prodotto NARDA! Sei in possesso di uno strumento che per molti anni ti garantirà un'alta qualità di servizio. NARDA riconosce l'importanza del Cliente come ragione di esistenza; ciascun commento e suggerimento, sottoposto all'attenzione della nostra organizzazione, è tenuto in grande considerazione. La nostra qualità è alla ricerca del miglioramento continuo. Se uno dei Suoi strumenti NARDA necessita di riparazione o calibrazione, può aiutarci a servirla più efficacemente compilando questa scheda e accludendola all'apparecchio.

Tuttavia, anche questo prodotto diventerà obsoleto. In questo caso, ti ricordiamo che lo smaltimento dell'apparecchiatura deve essere fatto in conformità con i regolamenti locali. Questo prodotto è conforme alle direttive WEEE dell'Unione Europea (2002/96/EC) ed appartiene alla categoria 9 (strumenti di controllo). Lo smaltimento, in un ambiente adeguato, può avvenire anche attraverso la restituzione del prodotto alla NARDA senza sostenere alcuna spesa. Può ottenere ulteriori informazioni contattando i venditori NARDA o visitando il nostro sito Web www.narda-sts.it.

Dear Customer

thank you for purchasing a NARDA product! You now own a high-quality instrument that will give you many years of reliable service. NARDA recognizes the importance of the Customer as reason of existence; in this view, any comment and suggestion you would like to submit to the attention of our service organization is kept in great consideration. Moreover, we are continuously improving our quality, but we know this is a never ending process. We would be glad if our present efforts are pleasing you. Should one of your pieces of NARDA equipment need servicing you can help us serve you more effectively filling out this card and enclosing it with the product.

Nevertheless, even this product will become obsolete. When that time comes, please remember that electronic equipment must be disposed of in accordance with local regulations. This product conforms to the WEEE Directive of the European Union (2002/96/EC) and belongs to Category 9 (Monitoring and Control Instruments). You can return the instrument to us free of charge for proper environment friendly disposal. You can obtain further information from your local NARDA Sales Partner or by visiting our website at www.narda-sts.it.

Servizio richiesto: *Service needed:*

Solo taratura Riparazione Riparazione & Taratura Taratura SIT Altro:
 Calibration only Repair Repair & Calibration Certified Calibration Other:

Ditta:

Company:

Indirizzo:

Address:

Persona da contattare:

Technical contact person:

Telefono:

Phone n.

Modello:

Equipment model:

Numero di serie:

Serial n.

Accessori ritornati con l'apparecchiatura: **Nessuno** **Cavo(i)** **Cavo di alimentazione** **Altro:**
 Accessories returned with unit: None Cable(s) Power cable Other:

Sintomi o problemi osservati: *Observed symptoms / problems:*

Guasto: **Fisso** **Intermittente** **Sensibile a:** **Freddo** **Caldo** **Vibrazioni** **Altro**
 Failure: Continuous Intermittent *Sensitive to:* Cold Heat Vibration Other

Descrizione del guasto/condizioni di funzionamento:

Failure symptoms/special control settings description:

Se l'unità è parte di un sistema descriverne la configurazione:

If unit is part of system please list other interconnected equipment and system set up:

