

---

# User's Manual

# PMM 7000

## EMISSION PRECOMPLIANCE SYSTEM

### 150 kHz - 1000 MHz

#### **SERIAL NUMBER OF THE INSTRUMENT**

You can find the Series Number on the rear panel of the instrument.

Series Number is in the form: 0000X00000.

The first four digits and the letter are the Series Number prefix, the last five digits are the Series Number suffix. The prefix is the same for identical instruments, it changes only when a configuration change is made to the instrument.

The suffix is different for each instrument.

**NOTE:**

® Names and Logo are registered trademarks of Narda Safety Test Solutions GmbH and L3 Communications Holdings, Inc. – Trade names are trademarks of the owners.



If the instrument is used in any other way than as described in this Users Manual, it may become unsafe

Before using this product, the related documentation must be read with great care and fully understood to familiarize with all the safety prescriptions.

To ensure the correct use and the maximum safety level, the User shall know all the instructions and recommendations contained in this document.










This product is a **Safety Class I** and **Installation Category II** instrument according to IEC classification and has been designed to meet the requirements of EN61010-1 (Safety Requirements for Electrical Equipment for Measurement, Control and Laboratory Use).

This product has a **Pollution Degree II** normally only non-conductive pollution occurs. Occasionally, however, a temporary conductivity caused by condensation must be expected.





The information contained in this document is subject to change without notice.

**KEY TO THE ELECTRIC AND SAFETY SYMBOLS:**

 You now own a high-quality instrument that will give you many years of reliable service. Nevertheless, even this product will eventually become obsolete. When that time comes, please remember that electronic equipment must be disposed of in accordance with local regulations. This product conforms to the WEEE Directive of the European Union (2002/96/EC) and belongs to Category 9 (Monitoring and Control Instruments). You can return the instrument to us free of charge for proper environment friendly disposal. You can obtain further information from your local Narda Sales Partner or by visiting our website at [www.narda-sts.it](http://www.narda-sts.it).

	Warning, danger of electric shock		Earth
	Read carefully the Operating Manual and its instructions, pay attention to the safety symbols.		Unit Earth Connection
	Earth Protection		Equipotential

**KEY TO THE SYMBOLS USED IN THIS DOCUMENT:**

	<b>DANGER</b>	The DANGER sign draws attention to a potential risk to a person's safety. All the precautions must be fully understood and applied before proceeding.
	<b>WARNING</b>	The WARNING sign draws attention to a potential risk of damage to the apparatus or loss of data. All the precautions must be fully understood and applied before proceeding.
	<b>CAUTION</b>	The CAUTION sign draws attention against unsafe practices for the apparatus functionality.
	<b>NOTE:</b>	The NOTE draw attention to important information.

# Contents

<b>General safety considerations and instructions.....</b>	<b>Page</b> VI
<b>EC Conformity Certificate.....</b>	VII
<b>1 General Information</b>	<b>Page</b>
1.1 Documentation.....	1-1
1.2 Instruction Manual changes.....	1-1
1.3 Introduction to PMM 7000.....	1-1
1.4 System composition.....	1-1
1.5 PMM 7000 Optional accessories.....	1-2
1.6 Main specifications.....	1-3
1.7 Front panel.....	1-5
1.8 Emission measurements.....	1-6
<b>2 Installation</b>	<b>Page</b>
2.1 Introduction.....	2-1
2.2 Initial inspection.....	2-1
2.3 Packing and unpacking.....	2-1
2.4 Preparation for use.....	2-1
2.5 Installation check list.....	2-1
2.6 Line voltage selection.....	2-1
2.7 Power cable.....	2-2
2.8 Environment.....	2-2
2.9 Return for service.....	2-2
2.10 Equipment cleaning.....	2-2
2.11 Receiver installation.....	2-2
2.12 Handle positioning.....	2-2
2.13 Software installation.....	2-3
2.14 Dangerous input signals.....	2-5
2.15 Using Artificial mains.....	2-5
2.16 Using Voltage probe.....	2-5
2.17 Using Clamp.....	2-5
2.18 Using Antenna.....	2-6

<b>3 PMM 7000 receiver operation</b>	
3.1 PMM 7000 Receiver Operation.....	3-1
3.2 Program startup.....	3-1
3.2.1 Demo program.....	3-2
3.3 Program operation.....	3-5
3.4 File Manager.....	3-5
3.4.1 Save.....	3-6
3.4.2 Load.....	3-8
3.4.3 Compare.....	3-8
3.5 Print.....	3-8
3.6 Make Report.....	3-9
3.7 Redraw.....	3-10
3.8 Dynamic 80/120 dB.....	3-10
3.9 Comment.....	3-11
3.10 Conducted emission.....	3-12
3.10.1 SETUPs.....	3-13
3.10.2 Setup REMark.....	3-13
3.10.3 Frequency setting.....	3-13
3.10.4 Lisn.....	3-13
3.10.5 Min. ATT.....	3-13
3.10.6 Limits.....	3-13
3.10.7 Limit Offset.....	3-14
3.10.8 Make Limit.....	3-14
3.10.9 Detectors.....	3-17
3.10.10 Measure.....	3-17
3.10.11 Worst 10 Pks.....	3-18
3.10.12 Quit.....	3-18
3.11 Radiated emission.....	3-18
3.11.1 Creating an antenna factor table.....	3-19
3.12 Radiated power emission.....	3-21
3.13 Start Measure.....	3-22
3.14 Pause Measure.....	3-22
3.15 Stop Measure.....	3-22
3.16 Zoom Mode.....	3-22
3.17 Spectrum Mode.....	3-23
3.18 Manual Mode.....	3-24
3.18.1 Selecting parameters.....	3-24
3.18.2 Reference level.....	3-25
3.18.3 Detector.....	3-25
3.18.4 Demodulator.....	3-25
3.18.5 Lines/Antenna factor.....	3-25
3.19 Color selection.....	3-26
3.20 Help.....	3-26
<b>4 Technical description</b>	
4.1 Principle of operation.....	4-1
<b>5 Technical maintenance</b>	
5.1 Calibration check.....	5-1
5.2 Safety fuse substitution.....	5-1
5.3 Device cleaning recommendations.....	5-1

## Figures

---

Figure		Page
1-1	Front and rear panel.....	1-5
4-1	PMM 7000 Block Diagram.....	4-1

## Tables

---

Table		Page
1-1	Main Specifications.....	1-3



## **SAFETY RECOMMENDATIONS AND INSTRUCTIONS**

This product has been designed, produced and tested in Italy, and it left the factory in conditions fully complying with the current safety standards. To maintain it in safe conditions and ensure correct use, these general instructions must be fully understood and applied before the product is used.

- When the device must be connected permanently, first provide effective grounding;
- If the device must be connected to other equipment or accessories, make sure they are all safely grounded;
- In case of devices permanently connected to the power supply, and lacking any fuses or other devices of mains protection, the power line must be equipped with adequate protection commensurate to the consumption of all the devices connected to it;
- In case of connection of the device to the power mains, make sure before connection that the voltage selected on the voltage switch and the fuses are adequate for the voltage of the actual mains;
- Devices in Safety Class I, equipped with connection to the power mains by means of cord and plug, can only be plugged into a socket equipped with a ground wire;
- Any interruption or loosening of the ground wire or of a connecting power cable, inside or outside the device, will cause a potential risk for the safety of the personnel;
- Ground connections must not be interrupted intentionally;
- To prevent the possible danger of electrocution, do not remove any covers, panels or guards installed on the device, and refer only to NARDA Service Centers if maintenance should be necessary;
- To maintain adequate protection from fire hazards, replace fuses only with others of the same type and rating;
- Follow the safety regulations and any additional instructions in this manual to prevent accidents and damages.

## EC Conformity Certificate

(in accordance with the directives: EMC 89/336/EEC and low voltage 73/23/EEC)

This is to certify that the product: PMM 7000 Emission Precompliance System 150 kHz - 1 GHz

Produced by: NARDA Safety Test Solutions  
Via Benessea 29/B  
17035 Cisano sul Neva (SV) - ITALY

complies with the following European Standards:

Safety: CEI EN 61010-1 (2001)

EMC: EN 61326-1 (2007)

This product complies with the requirements of the Low Voltage Directive 73/23/EEC, amended by 93/68/EEC, and the EMC Directive 89/336/EEC amended by 92/31/EEC, 93/68/EEC, 93/97/EEC.

NARDA Safety Test Solutions

---

This page has been left blank intentionally



---

# 1 - General Information

---

## 1.1 Documentation

Enclosed with this manual are:

- a service questionnaire to send back to NARDA in case of equipment service is needed
- an accessories check list to verify all accessories enclosed in the packaging.

## 1.2 Instruction Manual changes

Instruments manufactured after the printing of this manual may have a serial number prefix not listed on the title page; this indicates that instruments with different Serial Number prefix may be different from those documented in this manual.

## 1.3 Introduction to PMM 7000

The PMM 7000 receiver is an **Emission Precompliance System** for measuring conducted and radiated interferences in the 150 kHz to 1000 MHz frequency range.

This measurement system has been designed for use on any PC with the Windows™ operating system.

Measurements taken with the PMM 7000 are in accordance with the various regulations regarding conducted emissions: FCC, VDE, CISPR, EN (Euronorm).

The PMM 7000 pre-compliance measurement system allows the designer to measure the conducted and radiated interferences of a prototype under test as part of the daily routine.

## 1.4 System composition

The PMM 7000 system is composed of the following components:

- 150 kHz - 1000 MHz EMI receiver with 16 A artificial mains built-in;
- Serial cable with 9/25 pin adapter;
- Software CD-ROM;
- Power cable;
- LISN cable;
- USB-RS232 serial converter
- N-BNC Adapter
- Operating manual;
- Certificate of compliance;
- Return for Repair Form.

### **1.5 PMM 7000 Optional accessories**

The following can be ordered as options:

- L1-150 Network
- L3-25 artificial mains ( three-phase, 25 A);
- L3-64 artificial mains ( three-phase, 64 A);
- L3-100 artificial mains ( three-phase, 100 A);
- L2-D, VNET-150 artificial mains;
- PL-01 pulse limiter;
- SHC-1 or SHC-2 high current voltage probes;
- AS-01 antenna set;
- EMCO 7405 low frequency probe set for electrical and magnetic fields;
- Van Veen loop antenna for lamp measurements;
- TRF-1 balanced/unbalanced transformers;.

## 1.6 Main specifications

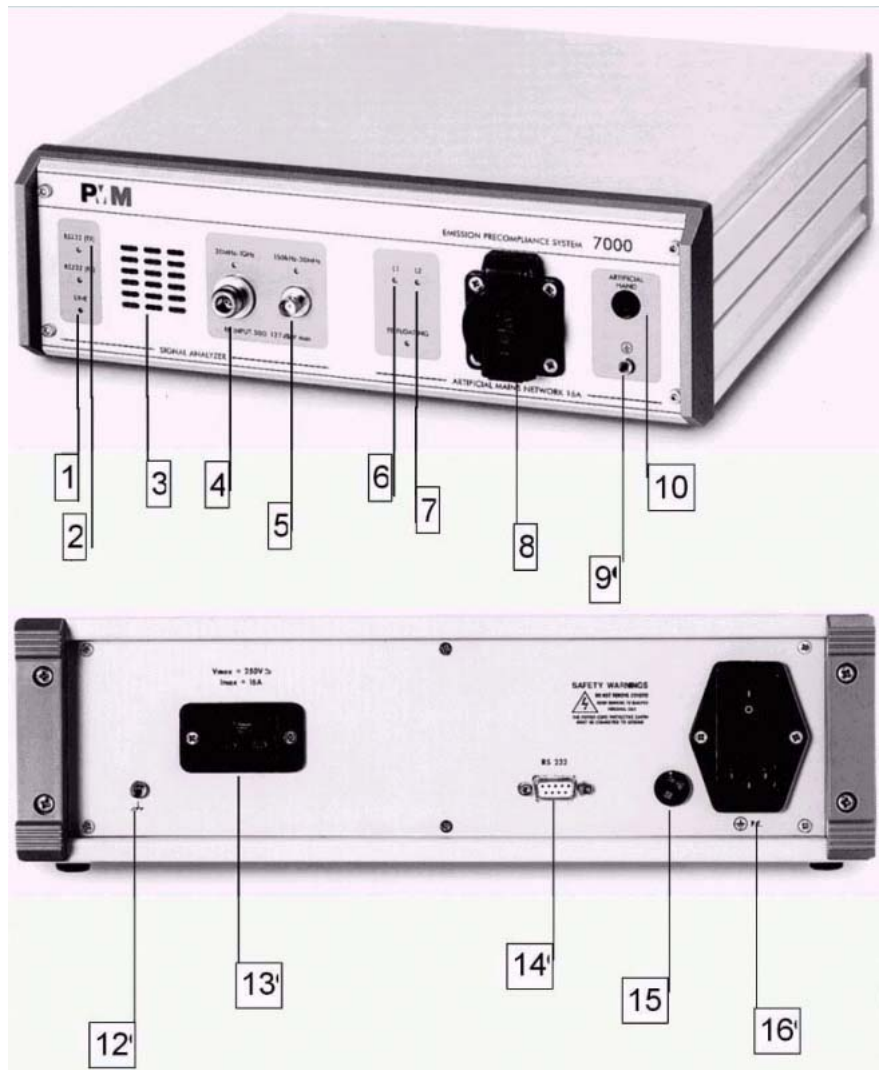
Table 1-1 lists the PMM 7000 performance specifications. The following conditions apply to all specifications:

- **The PMM 7000 needs at least a 15 minutes warm-up before operating.**
- The ambient temperature shall be 5° to 40° C.
- Altitude Max 2000 m

<b>TABLE 1-1 Electrical characteristics</b>				
<b>Frequency range</b>				
<b>Input A</b>	150 kHz - 30 MHz			
<b>Input B</b>	30 MHz - 1000 MHz			
<b>Frequency step</b>	10 kHz (input A), 100 kHz (input B)			
<b>Setting error</b>	<1x10 <sup>-6</sup>			
<b>RF input</b>				
<b>Input A</b>	50 Ohm, female BNC connector			
<b>Input B</b>	50 Ohm, female N connector			
<b>VSWR</b>	< 1.2 with ≥ 10 dB attenuation < 2 with 0 dB attenuation			
<b>Maximum input signal sinewave AC voltage</b>	<127 dBμV			
<b>Noise indication (dBμV) typical values</b>				
	<b>BW = 9 kHz</b>		<b>BW = 120 kHz</b>	
	( 150 kHz-1MHz)	(1-30 MHz)	(30-300 MHz)	(300-1000 MHz)
<b>Peak value</b>	< 20	< 8	12	14
<b>Quasi-peak value</b>	< 16	< 4	10	12
<b>Average value</b>	< 10	< 2	8	10
<b>Measurement time</b>				
<b>Peak detector</b>	10 msec - 1000 msec			
<b>Quasi-peak detector</b>	200 msec - 10 sec			
<b>Average detector</b>	20 msec - 1000 msec			
<b>Measurement error</b>		<b>Guaranteed</b>	<b>Typical</b>	
<b>Range 150 kHz - 30 MHz</b>	± 2 dB		± 2 dB	
<b>Range 30 MHz - 300 MHz</b>	+ 2 - 3 dB		± 2 dB	
<b>Range 300 MHz - 1000 MHz</b>	+ 2 - 4 dB		± 2 dB	
<b>Display units</b>	dBμV, dBμV/m, dBpW			
<b>Demodulation</b>	AM/FM with incorporated speaker (tone and volume adjustable)			
<b>IF Bandwidths (-6 dB)</b>	9 kHz/120 kHz (CISPR tolerance)			
<b>Internal LISN</b>				
<b>Frequency range</b>	150 kHz - 30 MHz			
<b>Network impedance</b>	50 Ω//50 μH			
<b>Continuous I out</b>	2 x 16 A			
<b>Max AC supply voltage</b>	250 V			
<b>EUT power plug</b>	SCHUKO 10/16 A			
<b>Artificial hand &amp; protective earth</b>	built-in			
<b>Pulse limiter</b>	built-in			

<b>Power supply</b>	
<b>AC</b>	115/230 VAC $\pm$ 10% user selectable
<b>Frequency</b>	50/60 Hz
<b>Power</b>	30 VA Max
<b>Fuse</b>	(250 V) T 125 mA (115 V) T 250 mA
<b>General data</b>	
<b>Interface</b>	RS-232 (9 pin)
<b>Operating temperature</b>	5 - 40°C
<b>Operating Humidity Max</b>	80 %
<b>Storage temperature</b>	-25 - +75°C
<b>RF suppression</b>	in conformity with CISPR 22
<b>Dimensions</b>	364 x 120 x 376 mm (W x H x D)
<b>Weight</b>	5 kg

## 1.7 Front and rear panel



**Fig. 1-1** Views of front and rear panels

Legend:

- 1) Power LED
- 2) TX/RX leds
- 3) Loud speaker
- 4) RF input - 30 MHz - 1 GHz
- 5) RF input - 150 kHz - 30 MHz
- 6) Line 1 led
- 7) Line 2 led
- 8) EUT power plug
- 9) Ground Plug
- 10) Artificial hand
- 11) Power switch
- 12) Ground plug
- 13) EUT power supply plug
- 14) RS232 connector
- 15) Safety fuse/power switch
- 16) Main power plug

## 1.8 Emission measurements

All electric, electromechanical and electronic devices are potential generators of electromagnetic interference (EMI).

The term EMI thus refers to the electromagnetic fields emitted by a device which propagate themselves along cables or through the air and couple with other devices that are present in the surroundings.

These electromagnetic fields (conducted noise or radiated interference) coupling with nearby equipment can cause possible malfunctions.

Today, thanks to international standards (IEC) and the European directives implemented by the member states of the European community, product commercialisation is subject to the measurement of this interference, which must be within well defined limits.

The philosophy used for the PMM 7000 was that of developing a simple and reliable system of measurement for classifying or inspecting any electric or electronic device from the first stages of design.

The mandatory measurement of emitted noise obliges equipment constructors to respect the limits foreseen by basic standards or specified for each product category.

The PMM 7000 receiver is the ideal solution for prototype debugging and periodical production testing.

The recommendations and standards in force specify the measurement criteria, the environment for carrying out tests and the instrumentation to be employed; this is so that everyone can perform the same measurement with the same results.

The PMM 7000 control software permits rapid use of the instrument without any special difficulties. All operations, calculations and preparations are made automatically. Thus, the operator can concentrate just on analysing the measurement results.

The PMM 7000 hardware has also been designed for rapid and easy installation on any PC with the Windows™ operating system and with at least one free serial port.

The typical objective in using the PMM 7000 EMI receiver is that of measuring, frequency by frequency, the maximum noise emitted by equipment under test in the 150 kHz to 1000 MHz frequency range.

The standards also specify that the measurement environment should have a reference plane or ground plane.

The device under test (DUT) must be installed according to the procedures indicated in the constructor's manual and normal operating conditions respected.

## 2 - Installation

### 2.1 Introduction

This section provides the information needed to install your PMM 7000. Included is information pertinent to initial inspection, power requirements, line voltage and fuse selection, power cables, interconnection, environment, instrument mounting, cleaning, storage and shipment.

### 2.2 Initial inspection



**WARNING**

**To avoid hazardous electrical shock, do not turn on the instrument when there are signs of shipping damage to any portion of it.**

### 2.3 Packing and Unpacking

Inspect the shipping container for damage.

If the shipping container or cushion material is damaged, it should be kept until the contents of the shipment have been checked for completeness and the instrument has been checked mechanically and electrically.

Verify the accessories availability in the shipping referring to the accessories check list enclosed with the Users Manual.

Notify any damage to the carrier personnel as well as the NARDA Representative.

### 2.4 Preparation for use



**WARNING**

**This is a Safety Class I equipment, it is provided with a protective earth terminal. An uninterruptible safety earth ground must be provided from the main power source to the product input wiring terminals through the power cable (or supplied power cable set). Verify the safety earth ground functionality before operation.**

### 2.5 Installation Check list

Before operation the following steps shall be taken:

- Check the line voltage to ensure the compatibility with the equipment settings.
- Verify that the fuse rating is appropriate for the line voltage used.



**WARNING**

**Before plugging PMM 7000 into the main supply line ensure that the line voltage is in the range specified, and that the appropriate fuse have been selected.**

### 2.6 Line voltage selection

PMM 7000's power supply voltage is factory set at 230 VAC.

To change the PMM 7000's power supply voltage it is necessary to rotate the power switch, located on the rear panel, to the desired voltage.



**WARNING**

**Before connecting this instrument, ensure that an uninterruptible safety earth ground is provided from the main power source to the product protective earth connection. If this instrument is to be connected to other equipment or accessories, prior to energizing either unit verify that a common ground exists between them.**

**Any interruption or loosening of the protective earth ground conductor, either inside or outside the unit or in an extension cable will cause a potential shock hazard that could result in personal injury.**

**2.7 Power cable** This instrument is equipped with a three wires power cable. When connected to an appropriate AC power receptacle, this cable grounds the instrument chassis.

**2.8 Environment** The operating environment is specified to be within the following limitations :

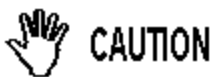
- Temperature +10° to +40° C
- Humidity < 90% relative
- Altitude 4000 meters

The instrument should be stored in a clean, dry environment  
The storage and shipping environment is specified to be within the following limitations :

- Temperature -40° to + 50° C
- Humidity < 95% relative
- Altitude 15000 meters

**2.9 Return for service** If the instrument should be returned to NARDA for service, please complete the service questionnaire enclosed with the Users Manual and attach it to the instrument.  
To minimize the repair time, be as specific as possible when describing the failure. If the failure only occurs under certain conditions, explain how to duplicate the failure.  
If possible, reuse of the original packaging to ship the equipment is preferable.  
In case other package should be used, ensure to wrap the instrument in heavy paper or plastic. Use a strong shipping container and use enough shock absorbing material around all sides of the equipment to provide a firm cushion and prevent movement in the container.  
To prevent damage during shipment in particular protect the front panel.  
Seal the shipping container securely.  
Mark the shipping container FRAGILE to encourage careful handling.

**2.10 Equipment cleaning** Use a clean, dry, non abrasive cloth for equipment fan opening cleaning.

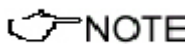


**To clean the equipment do not use any solvent, thinner, turpentine, acid, acetone or similar matter to avoid damage to external enclosure.**

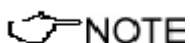
**2.11 Receiver Installation** The PMM 7000 receiver can only function if connected to a PC via the RS-232 cable.

The below procedure should be followed:

- Connect RS-232 cable between PC and PMM 7000;
- Plug in the PC and PMM 7000 power cables;
- Switch on the PC and PMM 7000.



**The PMM 7000 needs at least a 15 minutes warm-up before operating**



**When 7000 is on, you can see the L1 led blinking. This warns you that PMM 7000 is working properly.**

**2.12 Handle positioning** To change the position of the handle, pull it in front of yourself and turn it up or down according to the wished position.



**In order to use the built-in artificial mains an isolating transformer must be placed between the main power and the LISN. This is to avoid the safety switches always being activated due to the high current dispersions of the LISNs themselves.**



**2.13 Software installation** In order to use the PMM 7000 all of the files contained on the supplied CD-ROM must be installed.

Follow the procedure below:

- switch on the PC and launch the Windows operating system.
- insert the PMM 7000 CD-ROM in the CD drive;
- invoke the “Run” function from the Program Manager
- enter the command “A:SETUP” and press <Enter>.

During the installation phase, the program will request confirmation of the directory on which the files are to be installed. Reply with **Continue** if you wish to confirm the directory **7000**, otherwise type in a new name.

The screen display will be similar to the following:



Click on the **Continue** button to continue with the installation procedure, or **Exit Setup** to abort it. Near the end of the installation procedure the program will ask if the demonstration program is also to be installed.

The display will be:



Reply with **OK** to install the software demo.

Normally the program automatically identifies the serial port that the receiver is connected to. If you wish to force the use of a specific port, the following procedure should be used:

- activate the **Program Manager**
- invoke the **Proprieties** command
- type on the command line: **7000.exe COMM=N**
- where **N** indicates the serial port to use

The PMM 7000 software is composed of various files, some are only accessible to the user (e.g. **Header.TXT**) after their installation while others, although indispensable for correct system operation, are totally transparent to the operator.

### 2.14 Dangerous input signals

Note: noise produced by equipment under test can be extremely dangerous for the receiver's input stage, even if not shown on the PMM 7000 screen. It is possible, in fact, to have an associated frequency outside the receiver's measurement range but with a very high energy content that can damage the PMM's 7000 input stage. If you have some doubt about the amplitude of your signal, use an external attenuator or measure it with an oscilloscope before connecting it to the receiver.

### 2.15 Using Artificial mains

To acquire and measure conducted noise on power cables of any type of electrical or electronic device it is necessary to use an artificial mains (LISN) inserted between the mains and the device in question. The LISN employed must conform to CISPR-16 standards. PMM 7000 include an internal LISN up to 16A.



### WARNING

**In order to use the artificial mains an isolating transformer must be placed between the mains and the LISN. This is to avoid the safety cutout always being activated due to the high current dispersions of the mains themselves.**

The PMM 7000 receiver is automatically connected to his 16 A, internal artificial mains. Noise measurement on each single phase and neutral is automatically switched via software. Alternatively, it is necessary to use manual switches located on the various LISNs.

Consult the operating manual of the artificial mains employed for further details.

### 2.16 Using Voltage probes

The voltage probe must be used when measurements are made at terminals other than mains ones, such as the load or command terminals for example. The voltage probe can also be used on power supply terminals when the V type artificial mains (e.g. L3-32 or L3-64) cannot be used without excessively influencing the equipment under test or when a LISN of adequate power is unavailable.

The voltage probe contains a resistor with a minimum resistance of 1500 ohm, in series with a capacitor of insignificant reactivity in ratio to the resistance (in the 150 kHz to 30 MHz range). See art. 12 of CISPR Publication 16.

Measurements must be corrected in accordance to the voltage split between the probe and the measurement equipment.

NARDA offers two probes with attenuation of 30 or 35 dB for currents up to 1500A.

The probe's attenuation value is specified in the PMM 7000 software by entering the **Setup** menu and clicking on the **EXT** button. See section 3.12.

### 2.17 Using Clamp

The absorbing clamp is used to define radiated emissions from power cables and I/O cables.



### NOTE

**The clamp should be connected, through a suitable coaxial cable, to the receiver's RF N connector input. Position your EUT on table or at floor depending upon the installation given to the end user.**

**Make sure to load the correction table according to the clamp used. Position the clamp over the slide bar and take several measurement at different clamp positions. At the end of this process to calculate the worst case. All values must be below the limit.**

## 2.18 Using antenna

When you use one or more antennas, or near field probes, you should load the antenna factors to a PMM 7000 file. In this way PMM 7000 will correct the absolute measurement adding or subtracting the correction factors frequency by frequency (see applicable software section).

The antenna factors of the our standard antenna are already pre-loaded In the software; simply load the appropriate file.

When you use two different antennas (i:e: Biconic and Log-periodic), K-factor table automatically takes into account correction factors and software prompt advises the operator to change antenna, pausing in the meantime measurement. Once finished the sweep, PMM 7000 will combine the two measurements into a single graph.

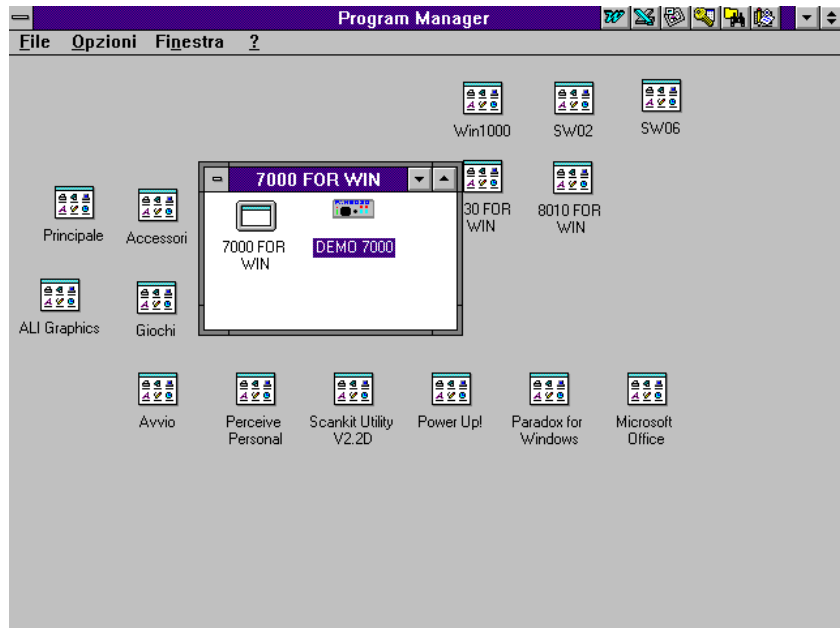
## 3 - Operation

### 3.1 PMM 7000 receiver operation Safety Precautions

Before running the program, ensure that the PMM 7000 measurement system is correctly connected and switched on. Check the serial connection between the PC and the receiver.

### 3.2 PMM 7000 program start-up

The PMM 7000 receiver has been designed for quick and easy operation, even by inexperienced personnel. If the program has been correctly installed, the Program Manager will display the following window:



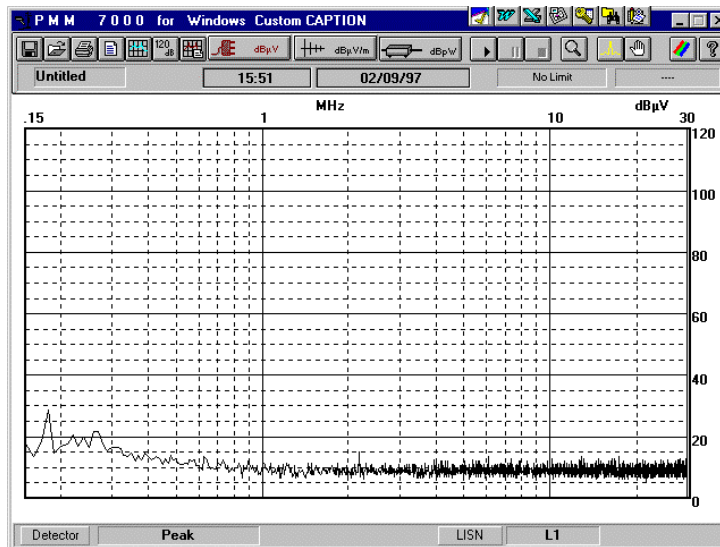
Double-click on the “7000 FOR WIN” icon to activate PMM 7000 receiver operation.

### 3.2.1 Demo program

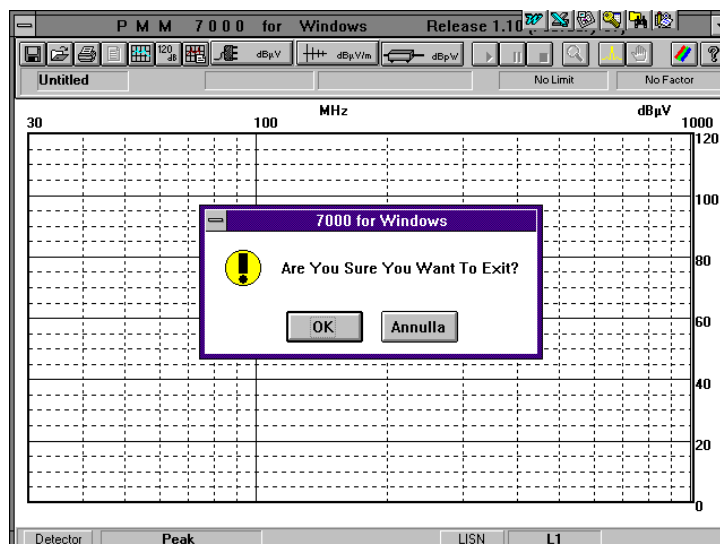
To run the demonstration program, simply double-click on the **DEMO WIN 7000** icon. All of the PMM 7000 commands can be activated without having the receiver connected to the PC.

This program is particularly useful for learning to use the receiver, preparing measurement set-ups or writing test reports without connecting the receiver to the PC.

Once launched via the run command, a window indicating the software release, issue date and PC port used will be displayed for a few seconds, after which the PMM 7000 main menu will be shown. The screen display will be similar to the following:

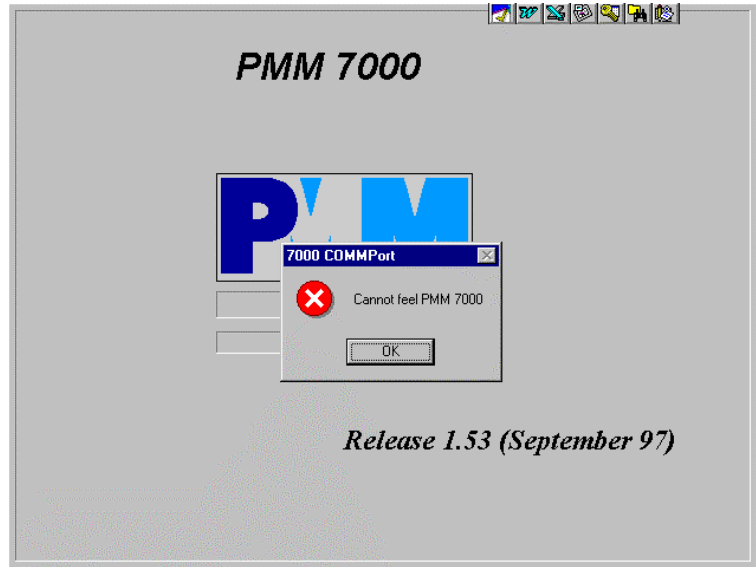


To exit the program, just click on the top left-hand corner. The software will display a confirmation window for exiting the program.



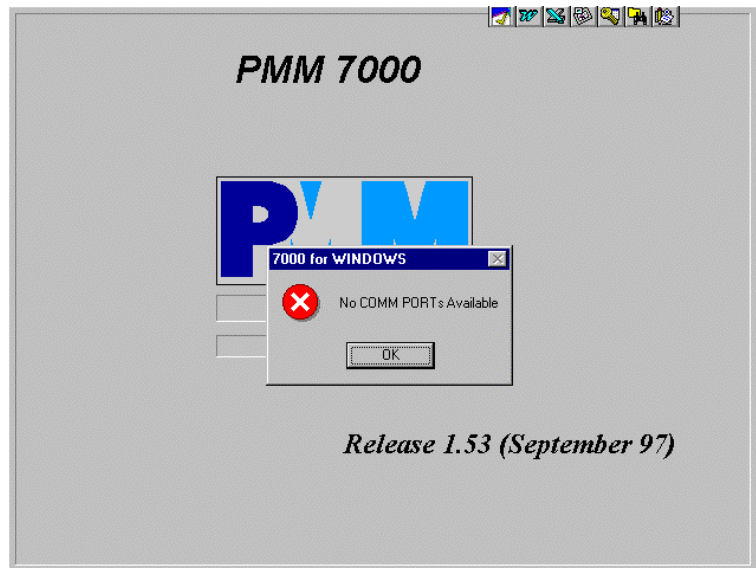
Click on the **OK** button to close the 7000 WIN for Windows application.

If serial cable is not connected or if 7000 is not turned on you will get the following message:

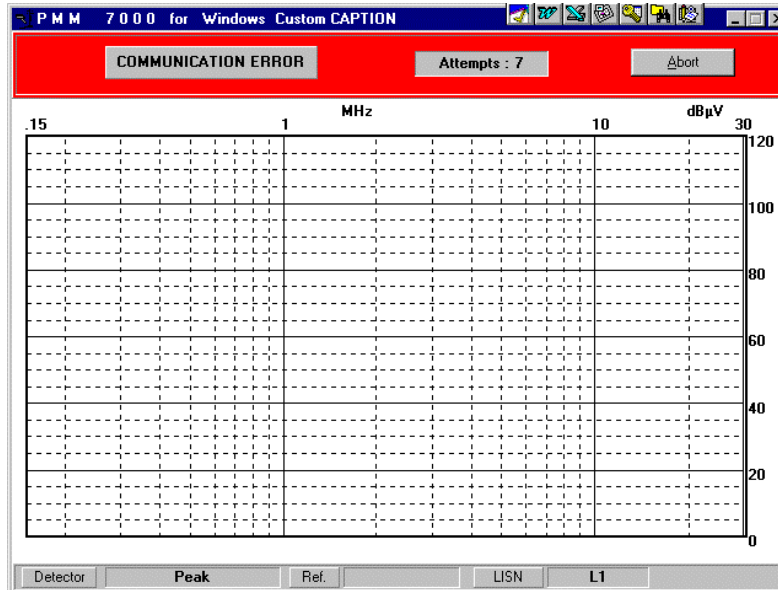


Respond OK and try again after checking RS232 connection and power to PMM 7000.

If no serial ports are available, the following message is displayed:



If during normal operation the serial cable is disconnected or PMM 7000 is turned off you get the following display:



To connect the serial cable or turn on PMM 7000 to establish communication to PC.



### **3.3 PMM 7000 program operation**

Software for the PMM 7000 receiver has been designed for use also by personnel who are not Windows™ experts. It is necessary however to have some familiarity with handling files and Windows. The monitor screen is usually divided into three parts. The upper part, consisting of one line, contains the main commands. The central part is assigned to measurement display.

The lower part of the screen indicates certain useful operational information such as the detector or LISN in use, comment lines etc. When the mouse is moved onto a command (button) a brief help caption describing the command is immediately shown for a few seconds.

### **3.4 File Manager**

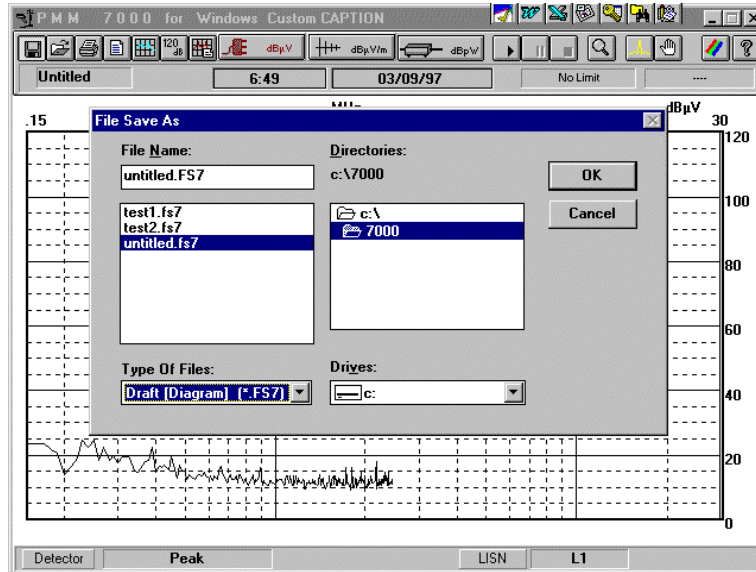
The PMM 7000 File Manager permits the setup files and graph files (measurements taken to be saved, compared and loaded.

Use the following button to save files :

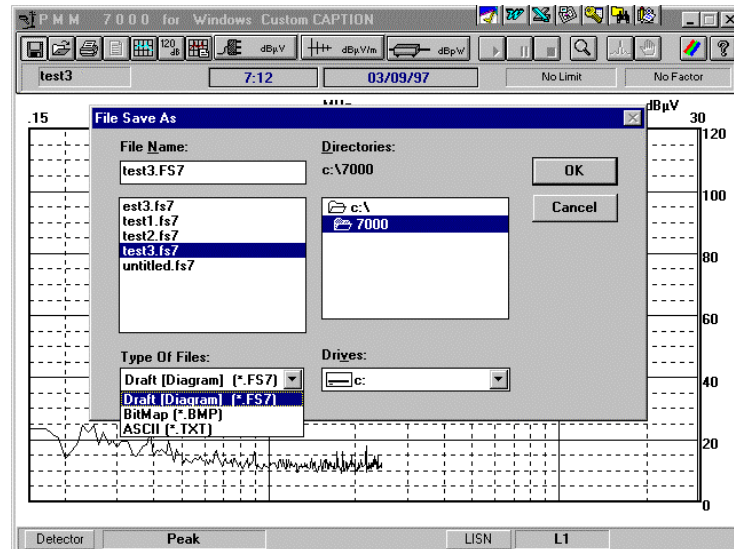


### 3.4.1 Save Files

When this command is activated it invokes the Windows™ File Manager which will open the following window :



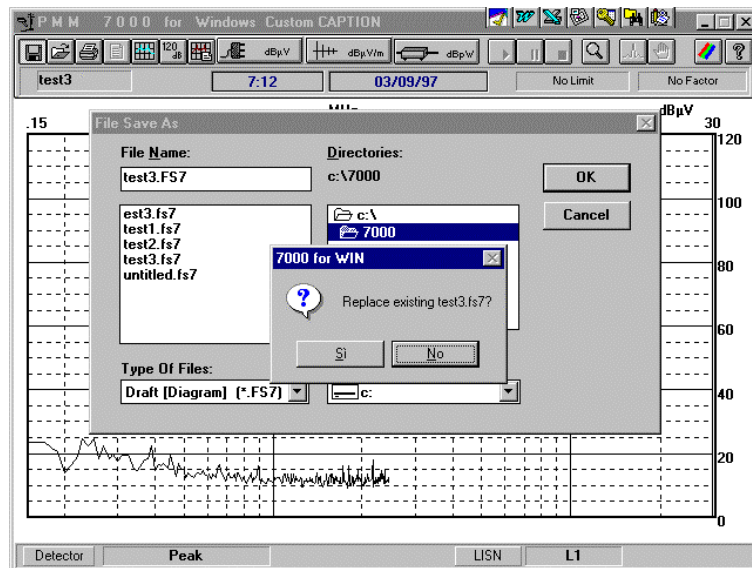
Enter the name of the file and click on the **OK** button. All measurement files have the extension **.FS7**. It is possible to save measurement setups or other file types by clicking on the **“Type of Files”** window. The various options are shown in the following screen display:



The file types are:

- .FS7**            save measurement graphs
- .BMP**          save graphs in the BitMap format;
- .TXT**           save graphs in the form of ASCII character tables

If it is attempted to save a file using the name of a pre-existing one, the following will be displayed:



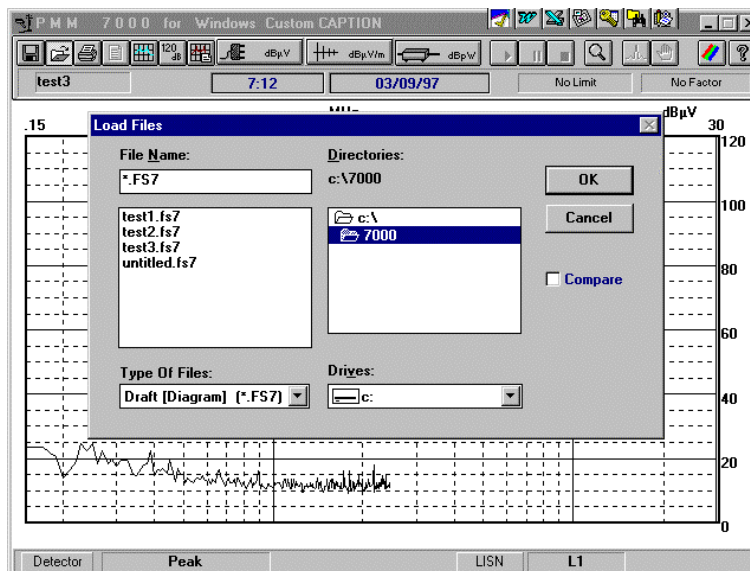
Reply with **Yes** to overwrite the existing file, or **No** to abort the operation.

### 3.4.2 Load files

Use the following button to load or compare previously saved files :



Clicking on this button results in the following display:



Choose the file that is to be loaded and click on the **OK** button.

### 3.4.3 Compare

It is possible to compare files already stored on hard disk; you can load up to two files. The first should be loaded without using **Compare** function, the second must be loaded with **Compare** enabled. Or, you can show one stored measurement and compare it with the current graph.

The colours of the two traces are user definable. See section 3.19

To cancel files that are no longer required the Windows™ File Manager should be run and supplied with the appropriate commands.

### 3.5 Print

Click on the following button to print out the measurements taken:



When this command is activated it invokes the Windows™ Print Manager, after which all the normal functions for managing document printing will be operative.

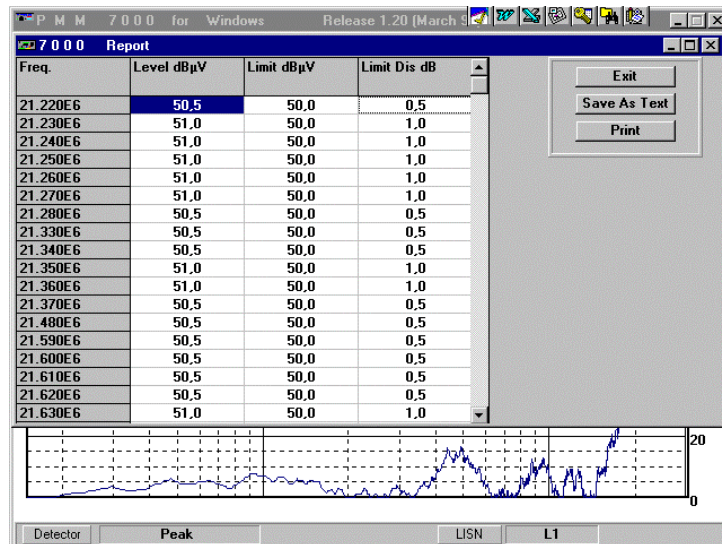
### 3.6 Make Report

The Make Report command allows the creation of test reports.



The software will create a table showing all frequencies where the limit are above an amount specified by "Limit Offset" defined by during setup.

Clicking on this button will display a window similar to the following:

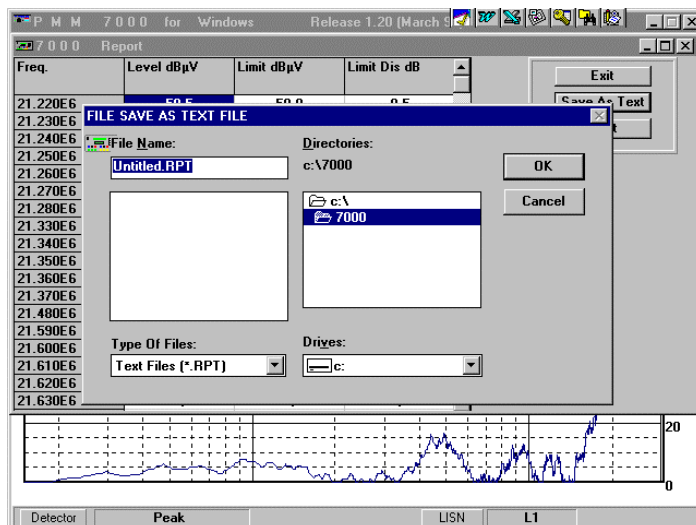


This results table can be printed with the internal Print command or saved as a text file, i.e. in ASCII.

### NOTE

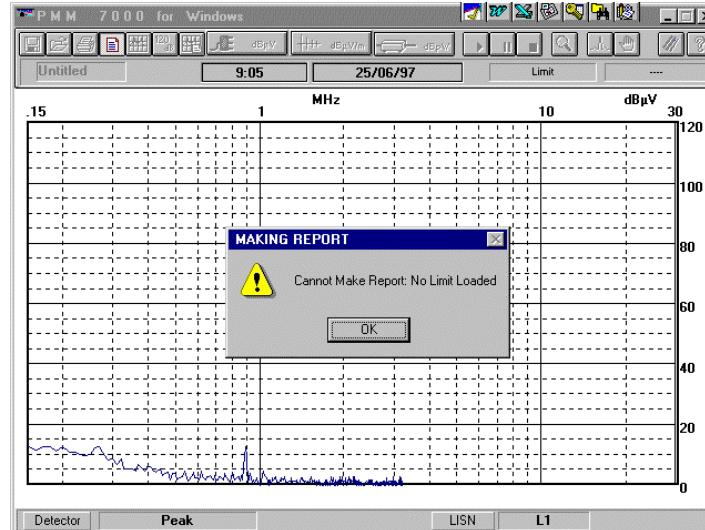
If you are using a negative limit offset the report will take in account all levels below the limit.

Selecting the "Save as Text" command opens a window similar to that below:



Type your wished file name and press OK.  
All report files have the .RPT extension.

If you try to make a report without loading any limits you get the following error message:



Push **OK** and enter setup menu by loading one limit.

### 3.7 Redraw

This command serves for canceling old data displayed on screen and redrawing the screen image or for obtaining the envelope of two or more graphs when using a LISN with measurements on more than one line (e.g. L1+L2).



Sometimes this command is used to refresh the screen due to Windows™ problem or not enough memory available mainly when you switch from one Windows application to another and then you go back to 7000 software.

### 3.8 Dynamic 80/120 dB

The **Dynamic** command allows the measurement's full-scale reading to be toggled between 80 and 120 dB.



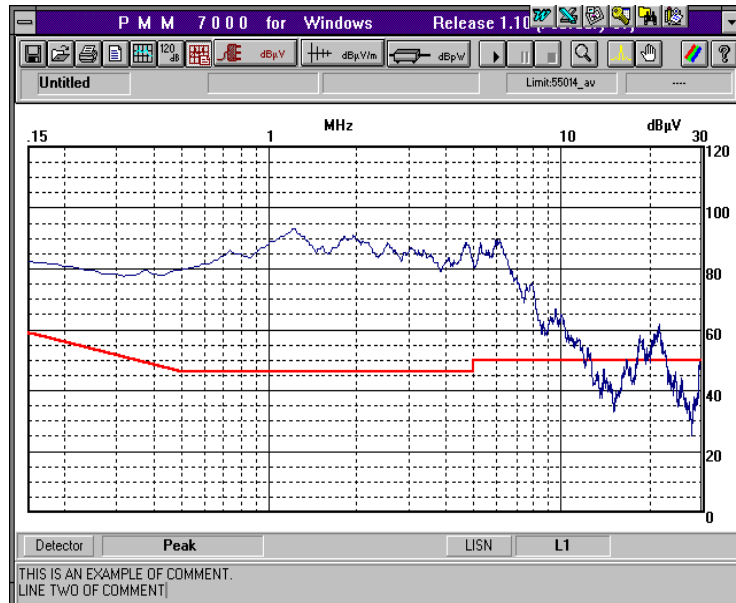
Using 80 dB full scale will increase your display resolution.

### 3.9 Comment

Comment lines can be added via the **Comment** button.

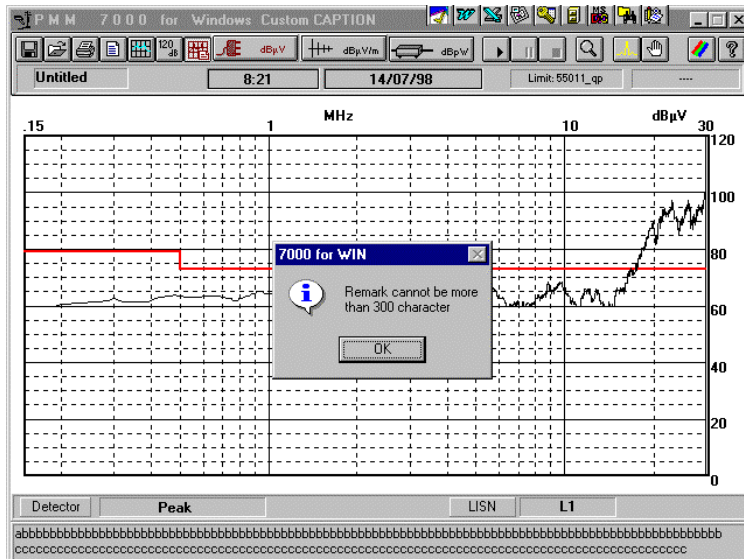


The program will add a window at the bottom of the graph where comments can be written. The comment window only displays two lines at a time, but it is possible to write up to 300 characters (including "space" and "c/r"). Use the keyboard's up and down arrow keys to show other lines not displayed. The screen display will resemble :



### NOTE

If you try to write more than 300 characters you will obtain the following warning message:

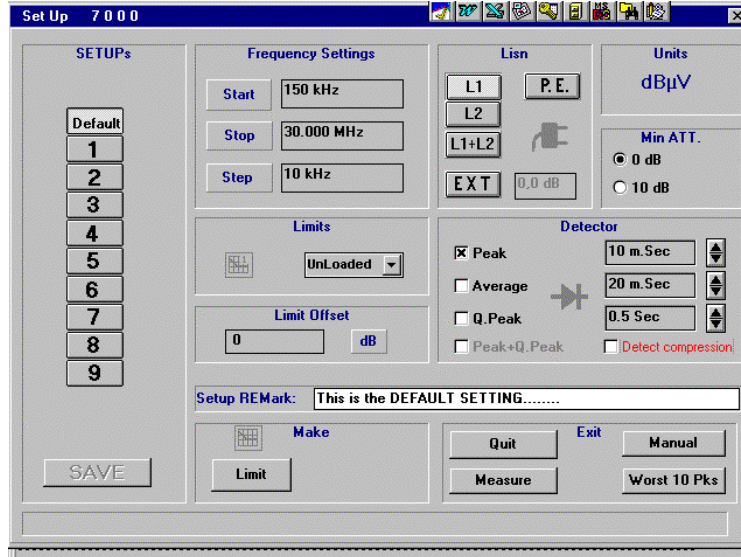


### 3.10 Conducted emission

To perform conducted measurement you should push the following button



Activating it, you automatically enter the setup menu for defining all measurement parameters.



Pushing **Measure** you will start the measurement with the parameters assigned by default.

The **SetUP 7000** menu is divided into several parts. The actions performed are:



### 3.10.1 SETUPS

Usually PMM 7000 uses the Default setup where the Limit is not assigned. Therefore you must load a limit and define which mains line should be measured and which detector should be used before starting the measurement.

If you wish to save your own configuration you must define measurement parameters first (Start, Stop and Step frequency; LISN, Limit, Detector and measurement time, Minimum Attenuator, Limit offset), then select SETUPS buttons from 1 to 9 and push **SAVE** button.

To recall for a specific set-up, push one of the 9 buttons where you loaded the set-up you wish to use.

### 3.10.2 Setup REMark

If you wish to remember to which configuration is used for, you can type a note using **Setup REMark** line. This message will be always displayed each time you recall such configuration.

### 3.10.3 Frequency setting

This area is used to select Start, Stop and Step frequency. Minimum Start is 150 kHz, maximum Stop is 30 MHz. Minimum Step is 10 kHz.



**If you try to type any frequency values lower than 150 kHz or higher than 30 MHz, PMM 7000 will display an warning message.**

### 3.10.4 Lisn

This area is used to select phase o neutral line (L1 or L2 buttons); to select protective earth (P.E.); to select L1 + L2 mode of operation (PMM 7000 will perform measurements on both lines and will give the worst case envelope); to select an external LISN or voltage probe usage, in this case you must assign the attenuation value associated with this specific probe.

### 3.10.5 Min. ATT.

This area is used to select the internal attenuator. If you do not know the noise level emitted by your equipment under test, the 10 dB attenuation is always recommended. Then if you find the signal to be very small you can repeat the measurement with 0 dB.

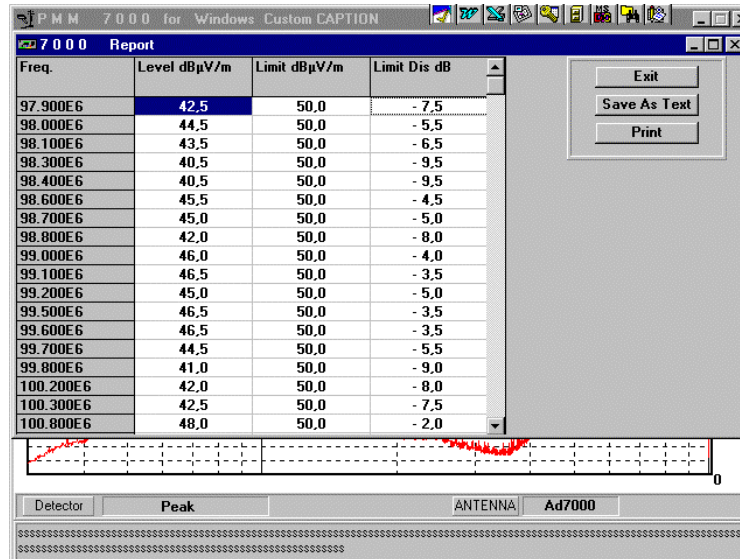
### 3.10.6 Limits

Limits function is used to select which limit should be shown on the screen. The company service have already pre-loaded several limits according to most used standards. Clicking on the arrow button gives access to the list of pre-loaded Limits.

### 3.10.7 Limit Offset:

This function is used to perform the report. You should assign a value to be compare with the limit. All frequencies where the levels are above such amount will be showed into report table.

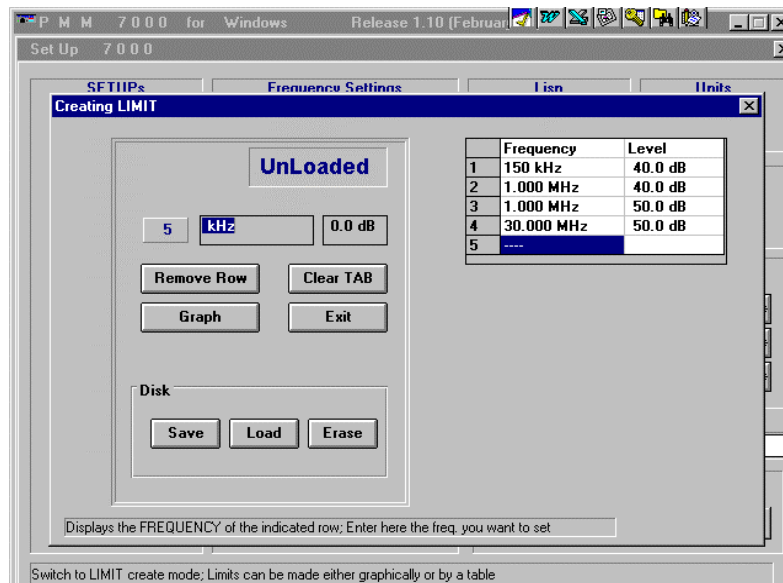
If you use a negative number you get all frequencies where the levels are below the limit. The example below offers the display how a typical report is shown



The report can be printed or saved into a file with text format. You can use any Windows™ application to further manipulate PMM 7000 measurement file.

### 3.10.8 Make Limit

This command is used to create or modify a limit. Clicking on the **Limit** button gives access to a special editor for creating and/or modifying limits. The screen display will resemble the following:

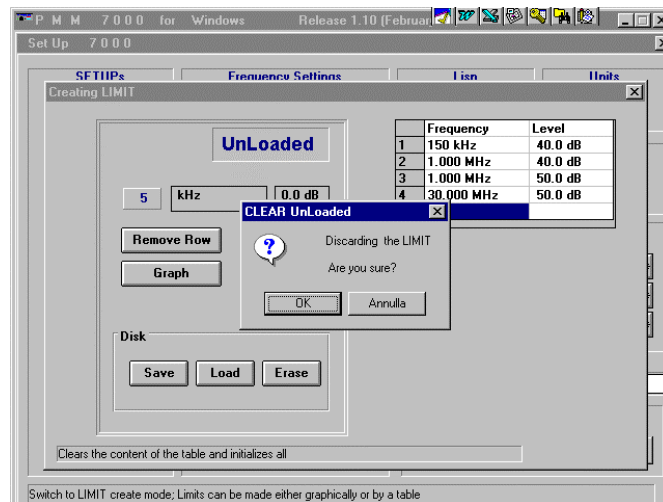


To assign frequency and level values just click on the desired row with the mouse and directly type the frequency value or level in dB.

Rows in the table relative to a specific limit can be deleted with the **Remove Row** command.

The **Clear TAB** command permits a limit that is no longer used to be canceled.

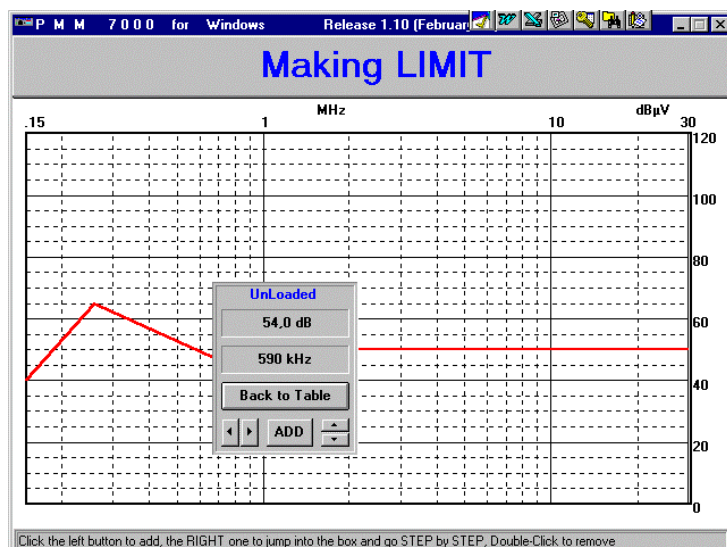
Before canceling the limit, the program displays the following confirmation prompt:



An **OK** reply will effectively cancel the limit.

The **Graph** command, instead, is used to define the limits in a graphical manner. The program displays a window showing the frequency and level indicated by cross-wires. Clicking on the **ADD** button adds the point to the limit table under construction. Step by step, move the cross-wires with the mouse to a certain point on the screen that has the desired frequency and level and then click on the **ADD** button to add the point to the table.

The screen display will be similar to the following:



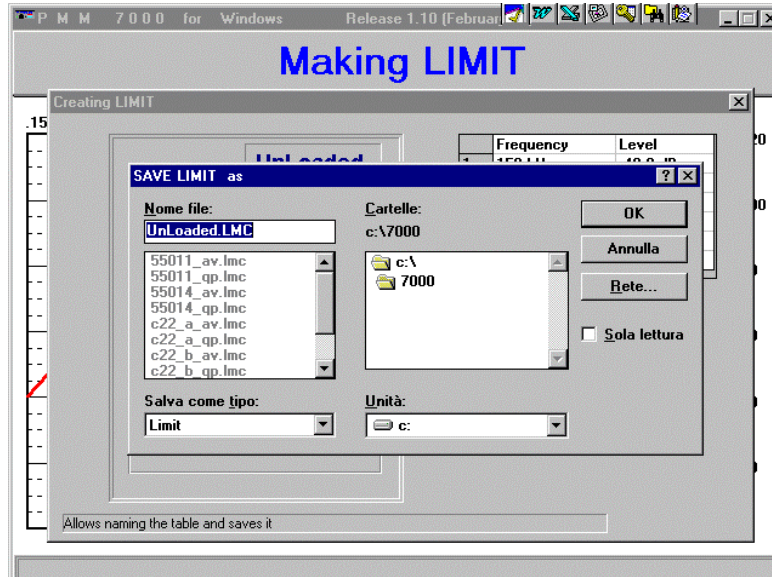
Click on the **Back to Table** button to automatically pass from the graphical layout back to the tabular format for the current table.

The **Exit** command exits the limits editor.

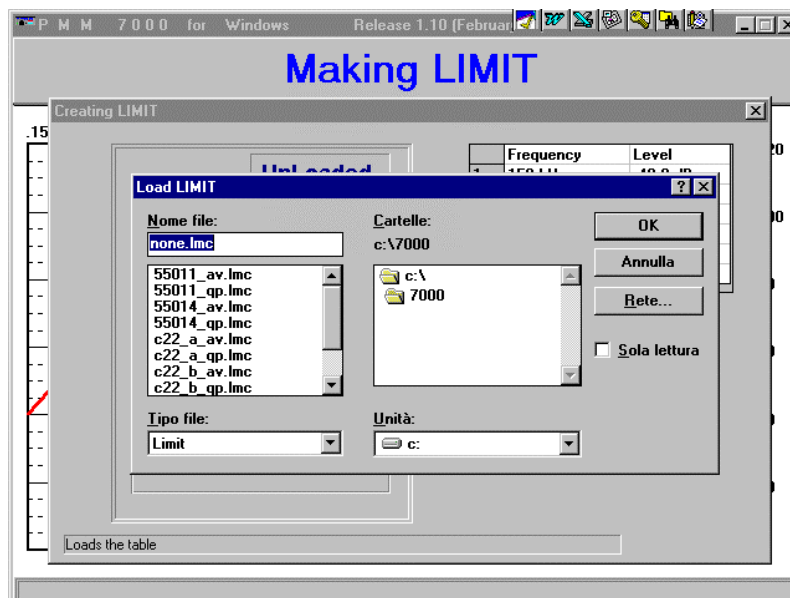
When a limit has been created, whether in tabular or graphical form, it should be saved using the **Save** command.

Clicking on **Save** enters the File Manager for assigning a name to the file to be saved. All limit files have the **.Lim** extension.

The screen display will resemble the following :



Clicking on **Load** will cause the File Manager to display all the limit files available for loading. The display will resemble the following:



Select the limit you are interested for and push **OK**.

### 3.10.9 Detectors

This area is used to define which detector should be used. Possible choices are: **Peak**, **Average**, **Q.Peak** and **Peak+Q.Peak**. Peak+Q.Peak function will be active only when one limit is selected.

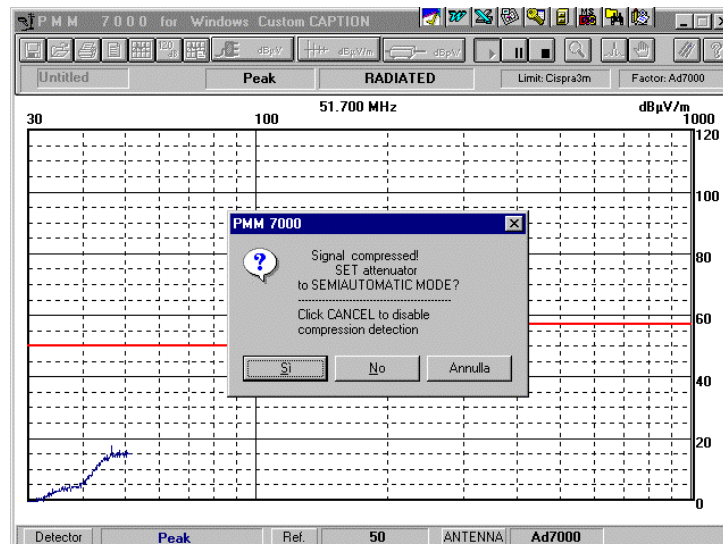
After selecting the detectors you can apply for measurements time. Fastest mode of operation is to use Peak detector with 10 msec measurement time for each frequency step.

### NOTE

**Since PMM 7000 has three detectors you can activate them simultaneously. Be aware that Peak detector is always on.**

PMM 7000 has a special circuit to detect if the input signal is too high. If that happens some intermodulation products (harmonics) will be produced with the result that phantom frequencies are displayed on the screen not produced by the EUT.

If you click on the "Detect compression" box, PMM 7000 will enable this circuit and display a warning message each time the phenomena happens. When the input signal is too high (typically greater than 70/80 dB $\mu$ V the display will show the following warning message:



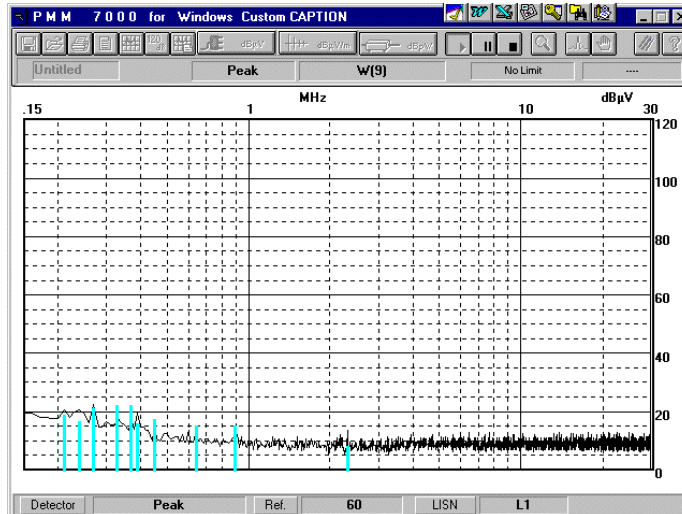
Answer **Yes** to pass into semi-automatic mode (the internal attenuator will be kept to the higher setting) or push **Cancel** to proceed with automatic attenuator selection.

### 3.10.10 Measure

To start the measurements.

### 3.10.11 Worst 10 Pks

to perform continuous measurements highlighting the worst 10 points. When this function is activated the display will be similar to the following:



For every sweep PMM 7000 increases an internal counter and display the number of sweeps performed into a window located on center of the second line of the main menu. (I.E. W(9) indicates the 7000 performed 9 measurements.

Refer to section 3.18 how to use this mode of operation.

### 3.10.12 Quit

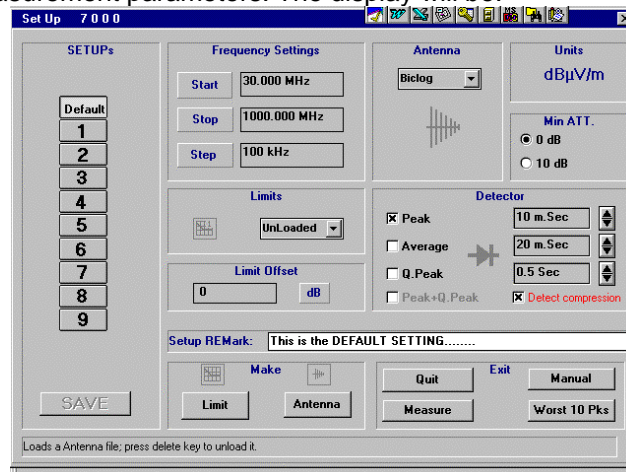
to exit the setup menu and to go back to main menu.

### 3.11 Radiated emission

To perform radiated measurements you should push the following button:



Activating it, you automatically enter the setup menu for defining all measurement parameters. The display will be:



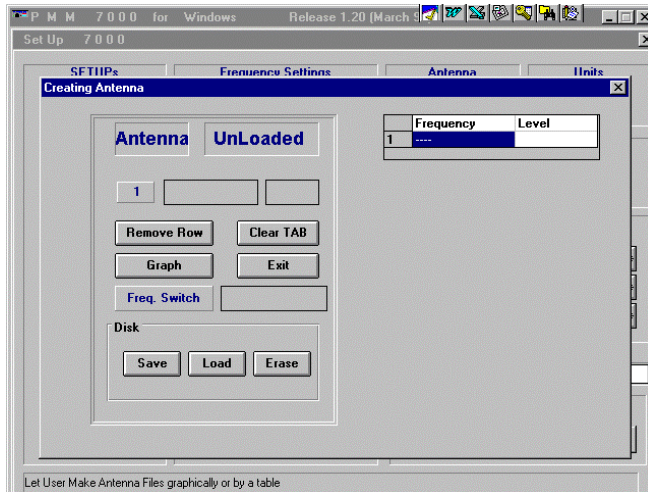
Make sure to use the 30 MHz - 1 GHz input (N connector). If you are using an antenna, do not forget to load the file containing the antenna factor. If not, use the command Make Antenna to create the appropriate correction file. All other mode of operations and command are the same as for conducted measurements. See 3.10





### 3.11.1 Creating an antenna factor table

Clicking on the Antenna button gives access to a special editor for creating and/or modifying antenna factor table. The display will resemble the following:

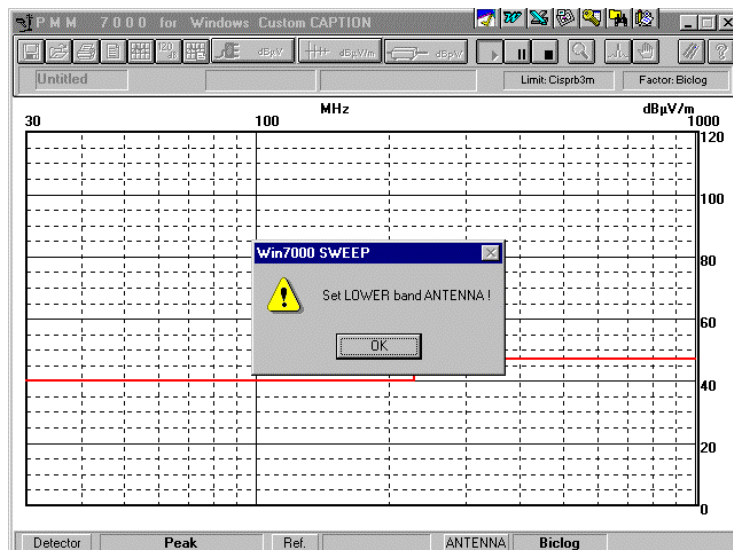


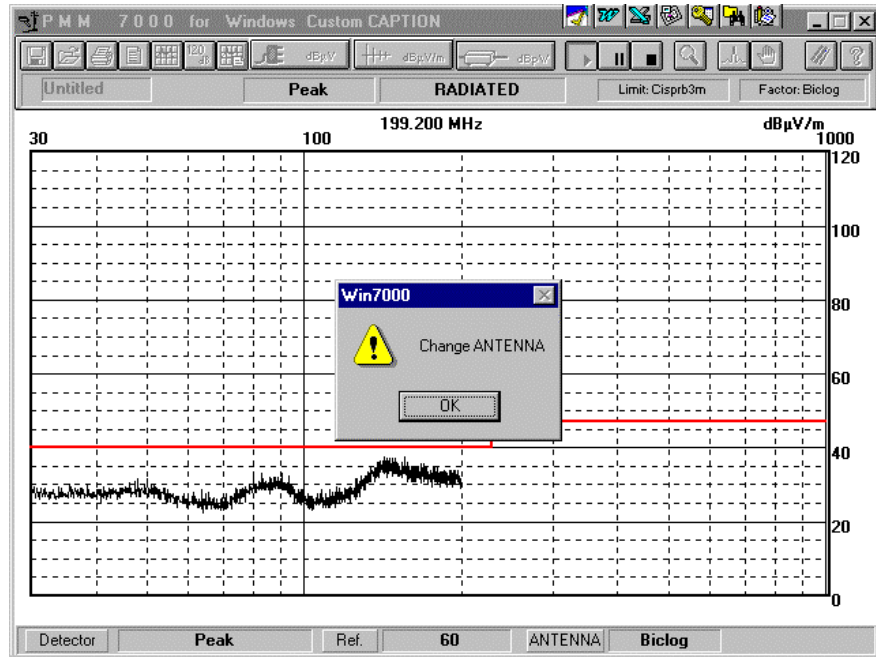
To assign frequency and attenuation/gain values just click on the desired row with the mouse and directly type the frequency value or level in dB.

If you are using two antennas (i.e. PMM antenna set AS-01), you must use the **Freq Switch** function to pause the measurement and change the antenna.

To enter the Freq Switch window and type the frequency required to pause 7000 enabling you to change the antenna. All other modes of operation and commands are similar to Limit creation. See Limit section (3.10.8).

When PMM 7000 reaches the frequency established by Freq. Switch, you get new warning message to change the antenna.





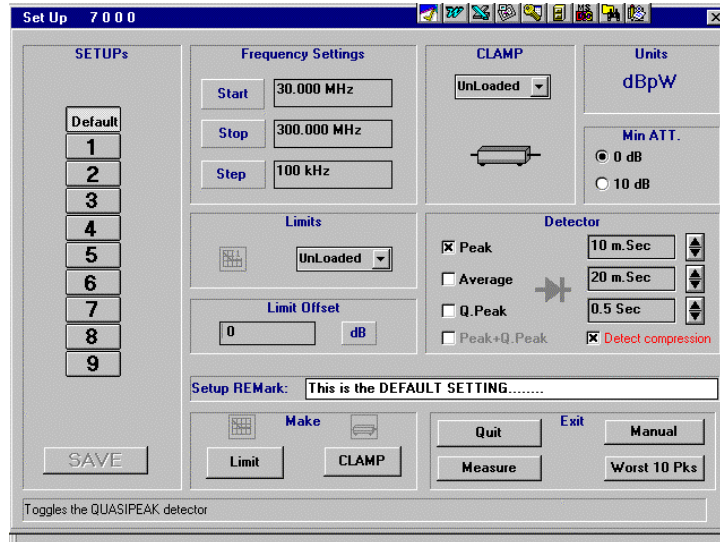


### 3.12 Radiated power emission

To perform radiated power measurements you should push the following button:



Activating it, you automatically enter the setup menu for defining all measurement parameters. The display will be:



Make sure to use the 30 MHz - 1 GHz input (N connector). If you are using a clamp, do not forget to load the file containing the correction factor. If not, use the **Make CLAMP** to create the specific table.

#### NOTE

**All other mode of operation and commands are the same as for conducted or radiated measurements.**

### 3.13 Start Measure

Measurement is started via the following button:



Clicking on this button starts measurements with the parameters specified on the setup.

### 3.14 Pause Measure

It is possible to suspend the receiver during the signal acquisition phase and thus temporarily stop measurement by clicking on the following button:



When this button is clicked on again, the receiver will recommence measurement from where interrupted.

### 3.15 Stop Measure

To terminally interrupt acquisition click on the Stop button:



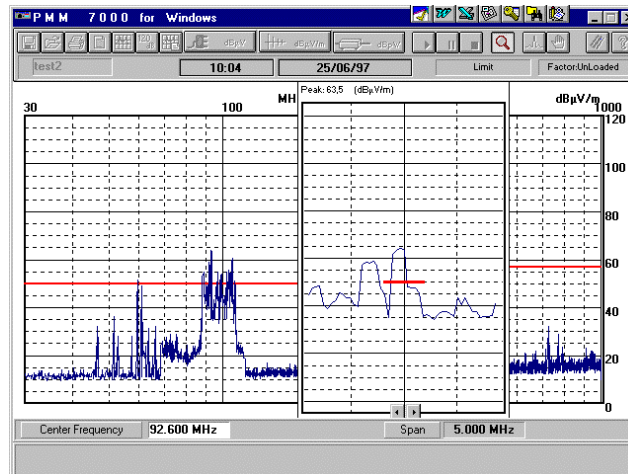
Clicking on Stop conserves all previously acquired data. The graph can be saved and printed even if the measurement is incomplete.

### 3.16 Zoom Mode

The Zoom command is used to enlarge a portion of the graph:



Activating the Zoom opens a window containing an enlarged portion of the graph. The window's position can be changed by dragging it with the mouse to the desired location; both vertically and horizontally. The screen display will be similar to the following:



The window's central frequency can be changed by clicking on the two arrows (left or right) or by positioning the mouse on the part of the graph to be expanded.

**Note:** the central frequency and Span are displayed on the lower part of the screen. The central frequency can be set by entering the **Center Frequency** window and typing in the desired value, from 150 kHz to 1000 MHz, via the keyboard. On the left top corner is displayed the level value of signal at center frequency.

### 3.17 Spectrum Mode

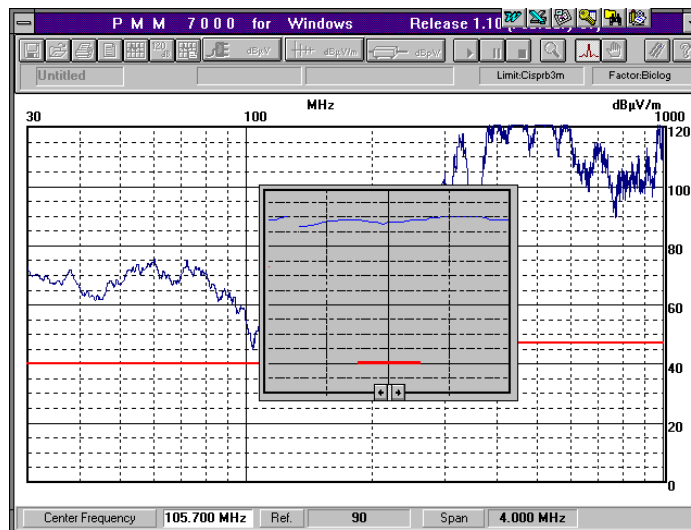
The PMM 7000 receiver can also be used as a spectrum analyzer with some limitation.



Clicking on the button activates the **Spectrum** mode, which permits the operator to detect any changes at a defined frequency whilst the measurement is in course.

In this mode of operation the receiver always uses the peak detector.

The **Spectrum** menu is shown in the following screen display:



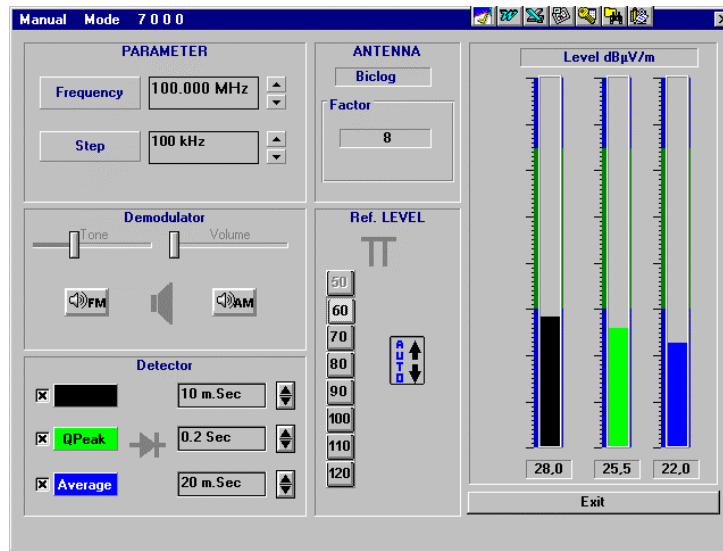
To change the Reference Level, just move the spectrum window up and down using mouse.

### 3.18 Manual Mode

With the aid of the **Manual Mode** command, the operator is able to carry out signal at a certain frequency like a selective voltmeter. A digital display and analogic indicator, also with max. hold function, indicate the measured signal's level.



After clicking on the button and entering **Manual Mode** the following screen display will appear :



#### NOTE

The measured readings will be more accurate if the level indicator remains in the green zone.

#### 3.18.1 Selecting parameters

The following can be set in the **PARAMETER** area:

**Frequency** for specifying the tuning frequency, expressed in kHz or MHz as a whole number or with two decimal places. Fine tuning is possible via the arrow buttons.

**Step** for defining the frequency steps to be used when increasing or reducing the central frequency.

Minimum value is 10 kHz for frequencies below 30 MHz and 100 kHz for frequencies over 30 MHz.

- 3.18.2 Reference Level** It is possible to set the receiver's input reference level between 50 dB $\mu$ V and 120 dB $\mu$ V. A high initial level (100 dB $\mu$ V) is set by default to avoid accidental damage; for this motive the level must be carefully reduced, avoiding situations where the analogic indicator remains permanently in the upper part of the scale (OVERLOAD).



Clicking on the button automatically sets up the best reference value according to the measured level.

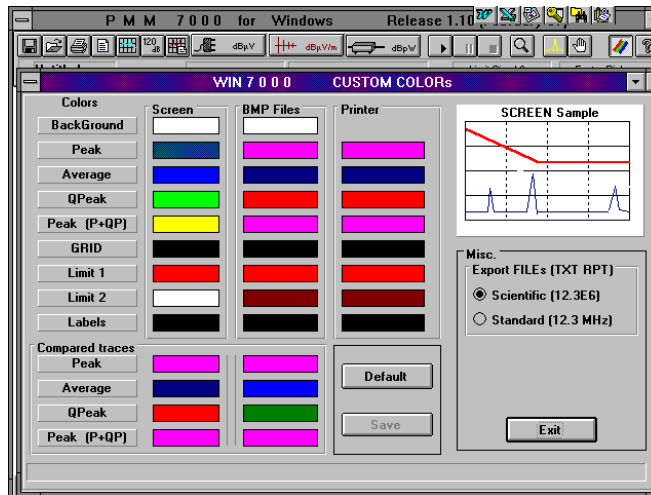
- 3.18.3 Detector** Selection can be made between **Peak** (instantaneous), **Q.Peak** (CISPR quasi-peak) and **Average** (mean). The user can activate all detectors simultaneously but Peak should be always on. Obviously, a Peak measurement will give pessimistic results compared to a Q.Peak or Average measurement.

- 3.18.4 Demodulator** By inserting the **AM** or **FM** demodulator it is possible to listen to the modulating noise of a certain carrier over the speaker. This helps the operator in identifying the source of the noise, internal or external to the device under test (DUT). With the sliding control switch you can adjust the tone or the volume.

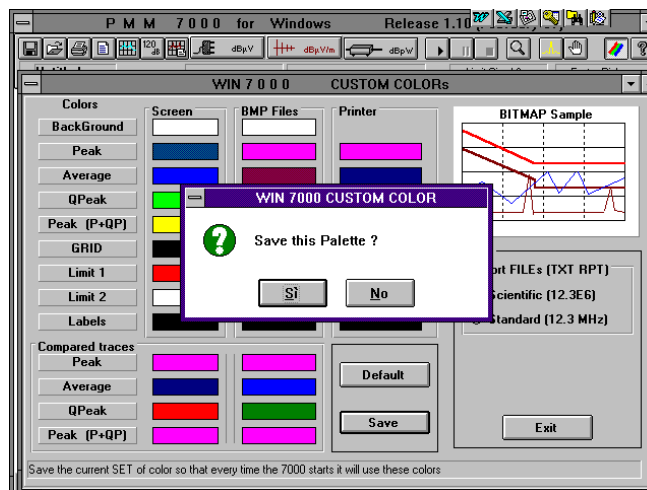
- 3.18.5 Lines/antenna factor** Depending upon the selected mode of operation the menu offers to chose which line of the artificial mains is connected to the receiver or it shows the correction factor (of antenna or clamp) for all frequencies chosen.

### 3.19 Color selection.

It is possible to change the color of all parts of the graph pushing the following button:  
The screen display will resemble the following:



Click on the box where the color is to be changed and select a new color. Press **Save** to save the new palette. Inside the **Misc.** Window you can define the format how to save your report. Possible choices are: **Scientific** or **Standard**.



Reply with **Yes** to confirm save.

By checking the Save setting box, the latest configuration will be saved in the default.pnl file.

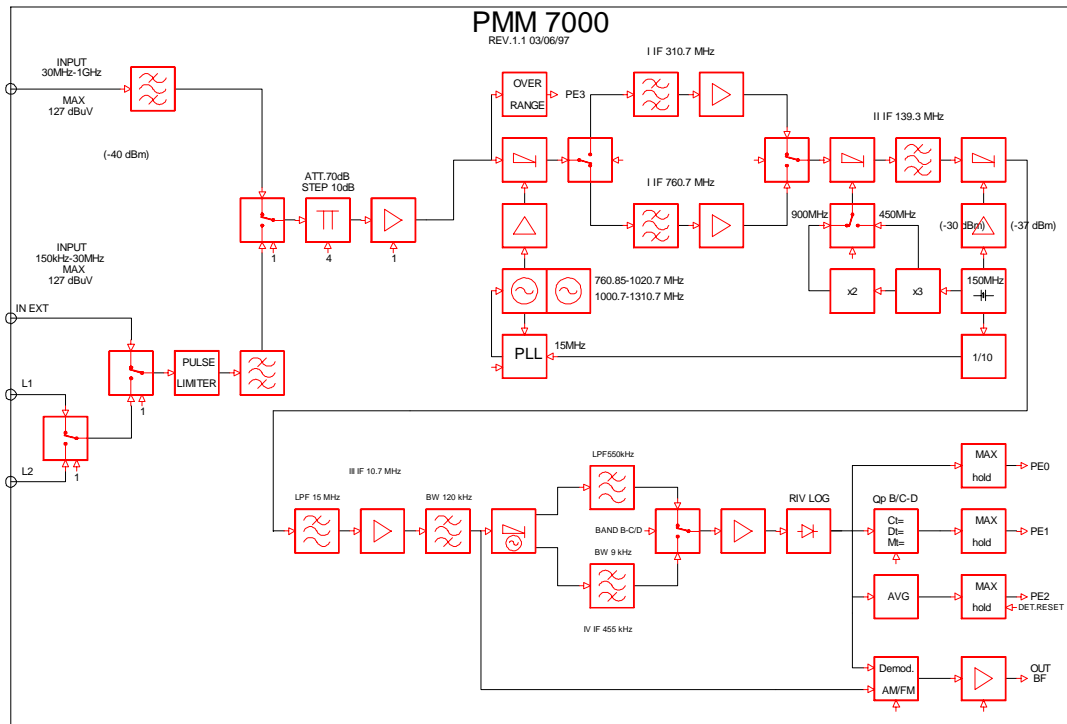
### 3.20 Help

Clicking on the **Help** command opens a window with a brief description of the PMM 7000 software.



## 4 - Technical description

**4.1 Principle of operation** PMM 7000 philosophy is based on the superheterodyne principle. By this principle any high frequency input signal, in a defined frequency range, is converted into a number of fixed lower intermediate frequency. The PMM 7000 diagram is shown below:



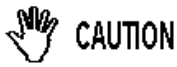
**Fig. 4-1 PMM 7000 Block Diagram**

---

This page has been left blank intentionally



## 5 - Technical maintenance



**INTERNAL CALIBRATIONS AND REPAIRS CAN ONLY BE CARRIED OUT BY AUTHORIZED TECHNICAL SUPPORT SERVICE.**

**NARDA DECLINES ALL RESPONSIBILITY FOR PERSONAL OR MATERIAL DAMAGES CAUSED BY NON AUTHORIZED OPERATIONS ON INSTRUMENTS OR TAMPERING WITH THEM.**

### 5.1 Calibration check

Sine-Wave Voltage Accuracy	Set in Manual mode with indication of Peak/Qpeak/Avg. Input a signal of 60dBuV. Check the readings at the frequencies listed in the test certificate.
Pulse response peak and quasi peak	Set in Manual mode with indication of Peak/Qpeak. Apply a 100 Hz pulsed signal, level 90dBuV/MHz. Measure Peak and Q-peak levels at 10MHz-100MHz.
Spurious disturbance	Set in Sweep mode with indication Peak. Terminate the input with a 50ohm load. Check the spurious levels at the frequencies listed in the test certificate.
Residual noise	Set in Manual mode. Terminate the input with a 50ohm load. Check the noise level (must be below the limits shown in the test certificate).
IF bandwidth at -6 dB POINT	Set in Manual mode with indication Avg. Input a signal of 10 MHz, level 60dBuV. Tune the center frequency up and down until reading 54dBuV. Check the correspondence with the IF filter bandwidth.  Repeat at the frequency of 100MHz. (refer to the test certificate)

### 5.2 Safety fuse substitution



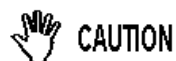
**Disconnect the power cable before substituting the fuse. Only use replacement fuses of the same type and specification.**

The safety fuse is housed in a special receptacle located between the power cable connector and the power switch.

A slow-blow 250 V type T 125 mA fuse is used for 230 V mains supply.

A slow-blow 250 V type T 250 mA fuse is used for 115 V mains supply.

### 5.3 Device cleaning recommendations



Use a clean, dry, non abrasive cloth for equipment fan opening cleaning.

**To clean the equipment do not use any solvent, thinner, turpentine, acid, acetone or similar substances when cleaning to avoid damaging silk-screen printing and/or plastic components.**

---

This page has been left blank intentionally

Caro cliente

grazie per aver acquistato un prodotto NARDA! Sei in possesso di uno strumento che per molti anni ti garantirà un'alta qualità di servizio. NARDA riconosce l'importanza del Cliente come ragione di esistenza; ciascun commento e suggerimento, sottoposto all'attenzione della nostra organizzazione, è tenuto in grande considerazione. La nostra qualità è alla ricerca del miglioramento continuo. Se uno dei Suoi strumenti NARDA necessita di riparazione o calibrazione, può aiutarci a servirla più efficacemente compilando questa scheda e accludendola all'apparecchio.

Tuttavia, anche questo prodotto diventerà obsoleto. In questo caso, ti ricordiamo che lo smaltimento dell'apparecchiatura deve essere fatto in conformità con i regolamenti locali. Questo prodotto è conforme alle direttive WEEE dell'Unione Europea (2002/96/EC) ed appartiene alla categoria 9 (strumenti di controllo). Lo smaltimento, in un ambiente adeguato, può avvenire anche attraverso la restituzione del prodotto alla NARDA senza sostenere alcuna spesa. Può ottenere ulteriori informazioni contattando i venditori NARDA o visitando il nostro sito Web [www.narda-sts.it](http://www.narda-sts.it).

Dear Customer

thank you for purchasing a NARDA product! You now own a high-quality instrument that will give you many years of reliable service. NARDA recognizes the importance of the Customer as reason of existence; in this view, any comment and suggestion you would like to submit to the attention of our service organization is kept in great consideration. Moreover, we are continuously improving our quality, but we know this is a never ending process. We would be glad if our present efforts are pleasing you. Should one of your pieces of NARDA equipment need servicing you can help us serve you more effectively filling out this card and enclosing it with the product.

Nevertheless, even this product will eventually become obsolete. When that time comes, please remember that electronic equipment must be disposed of in accordance with local regulations. This product conforms to the WEEE Directive of the European Union (2002/96/EC) and belongs to Category 9 (Monitoring and Control Instruments). You can return the instrument to us free of charge for proper environment friendly disposal. You can obtain further information from your local NARDA Sales Partner or by visiting our website at [www.narda-sts.it](http://www.narda-sts.it).

**Servizio richiesto:**  *Service needed:*

Solo taratura     Riparazione     Riparazione & Taratura     Taratura SIT     Altro:  
 Calibration only     Repair     Repair & Calibration     Certified Calibration     Other:

**Ditta:**

*Company:*

**Indirizzo:**

*Address:*

**Persona da contattare:**

*Technical contact person:*

**Telefono:**

*Phone n.*

**Modello:**

*Equipment model:*

**Numero di serie:**

*Serial n.*

**Accessori ritornati con l'apparecchiatura:**  **Nessuno**     **Cavo(i)**     **Cavo di alimentazione**    **Altro:**  
 *Accessories returned with unit:*     None     Cable(s)     Power cable     Other:

**Sintomi o problemi osservati:**  *Observed symptoms / problems:*

**Guasto:**  **Fisso**     **Intermittente**    **Sensibile a:**  **Freddo**     **Caldo**     **Vibrazioni**     **Altro**  
 *Failure:*  Continuous     Intermittent    *Sensitive to:*  Cold     Heat     Vibration     Other

**Descrizione del guasto/condizioni di funzionamento:**

*Failure symptoms/special control settings description:*

**Se l'unità è parte di un sistema descriverne la configurazione:**

*If unit is part of system please list other interconnected equipment and system set up:*

